

CEILING SUSPENDED FDE



FDE 40/50/60/71/100/125/140

Remote control (Option)

NEW



RC-EX3

Wired



RC-E5



RCH-E3

NEW

Wireless



RCN-E-E2

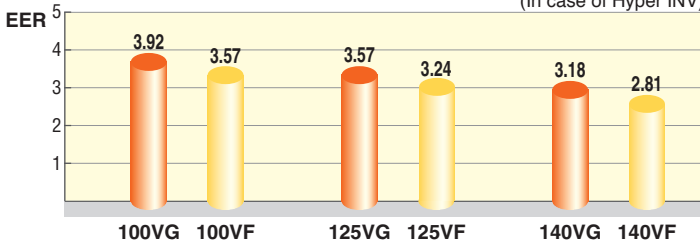


Point 1

High efficiency

Energy efficiency was improved by use of DC fan motor & high efficient heat exchanger.

(In case of Hyper INV)



Point 2

Reduction of weight

Thanks to decreasing the numbers of fan motor from two to one, reduction of weight was achieved.

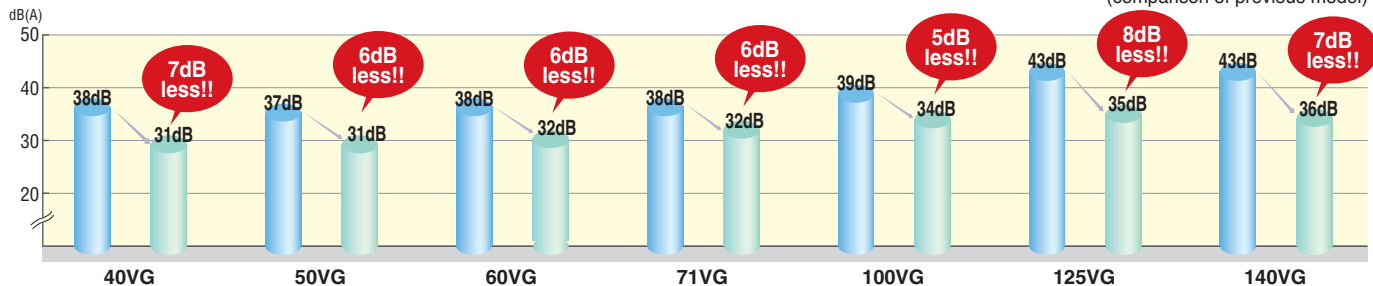
	previous	current	
60-71VG	37	33	4kg less!!
100-125-140VG	49	43	6kg less!!

Point 3

More quiet noise

The industry's lowest sound pressure levels were achieved by decreasing air flow volume, decreasing pressure loss with employment of one fan motor and optimizing casing and distributor shape.

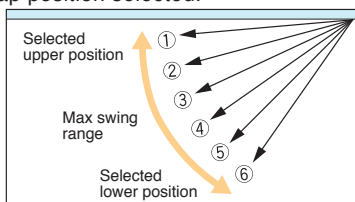
(comparison of previous model)



Point 4

Flap control system

The flap can swing within the range of upper and lower flap position selected.



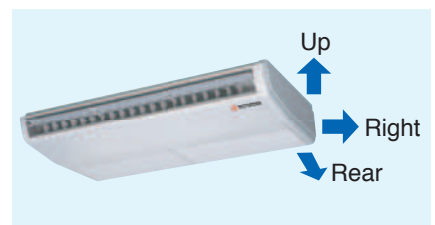
※The wireless remote control is not applicable to the flap control system.

Point 5







Improved installation workability




Increased freedom of a piping layout

The refrigerant pipe from the unit can be arranged in three directions, rear, right and up. The drain pipe can be arranged in two directions, left and right. This will allow a free layout of piping for various installation conditions. The unit can only be serviced from the bottom.



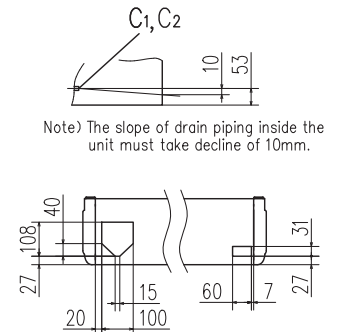
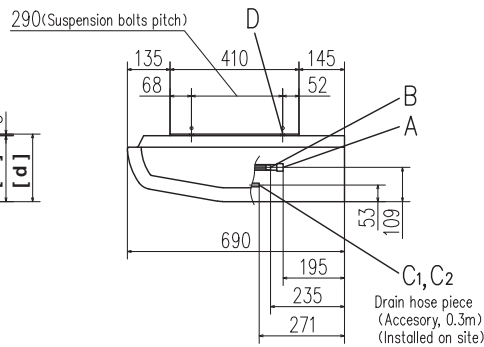
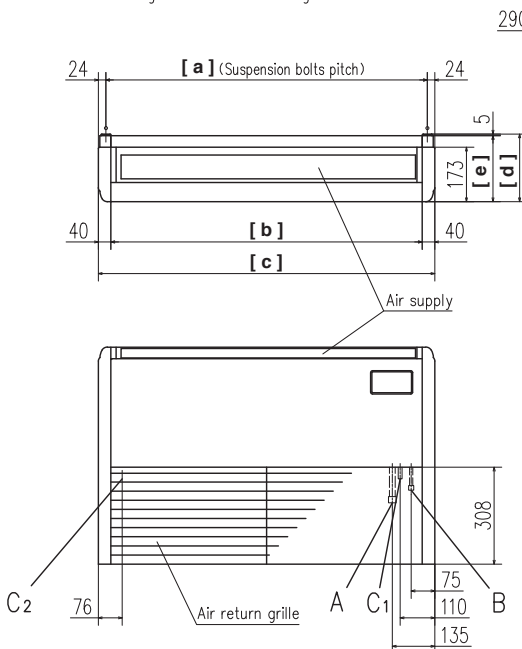
OUTDOOR UNIT

SRC • FDC	Hyper Inverter			Micro Inverter		
	40~60ZSX	71VNX	100~140VN(S)X	100~140VN(S)	200VSA	250VSA
model						
Chargeless	15m	30m		30m		
Height x Width x Depth (mm)	640 x 800(+71) x 290	750 x 880(+88) x 340	1,300 x 970 x 370	845 x 970 x 370	1,300 x 970 x 370	1,505 x 970 x 370

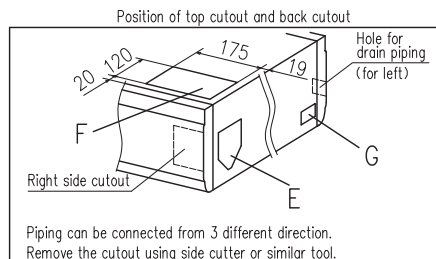
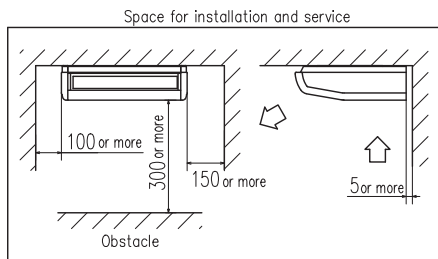
FDC	Standard Inverter		
	71VNP	90VNP	100VNP
model			
Chargeless	15m		
Height x Width x Depth (mm)	640 x 800(+71) x 290	750 x 880(+88) x 340	845 x 970 x 370

DIMENSIONS (Unit:mm)

Note (1) The model name label is attached on the fan casing inside the air return grille.



Symbol	Content	40-50-60VG	71-100-125-140VG
A	Gas piping	φ12.7(1/2") (Flare)	φ15.88(5/8") (Flare)
B	Liquid piping	φ6.35(1/4") (Flare)	φ9.52(3/8") (Flare)
C 1,2	Drain piping	VP20	
D	Hole for suspension bolts	(M10 or M8)	
E	Back cutout	PE cover	
F	Top cutout	Plate cover	
G	Hole for drain piping (for left back)	(Knock out)	



Make a space of [f] or more between the units when installing more than one.

DIMENSIONS TABLE

model	[a]	[b]	[c]	[d]	[e]	[f]
FDE40,50	1022	990	1070	215	210	4000
FDE60,71	1272	1240	1320	215	210	4500
FDE100~140	1572	1540	1620	255	250	5000

SPECIFICATIONS

		HyperInverter				
Set model name		FDE40ZSXVG	FDE50ZSXVG	FDE60ZSXVG	FDE71VNXVG	FDE100VNXVG
Indoor unit		FDE40VG	FDE50VG	FDE60VG	FDE71VG	FDE100VG
Outdoor unit		SRC40ZSX-S	SRC50ZSX-S	SRC60ZSX-S	FDC71VNX	FDC100VNX
Power source		1 Phase 220-240V, 50Hz / 220V, 60Hz				
Nominal cooling capacity (Min~Max)		kW 4.0 (1.1 ~ 4.7)	5.0 (1.1 ~ 5.6)	5.6 (1.1 ~ 6.3)	7.1 (3.2 ~ 8.0)	10.0 (4.0 ~ 11.2)
Nominal heating capacity (Min~Max)		kW 4.5 (0.6 ~ 5.4)	5.4 (0.6 ~ 6.3)	6.7 (0.6 ~ 7.1)	8.0 (3.6 ~ 9.0)	11.2 (4.0 ~ 12.5)
Power consumption	Cooling/Heating	kW 1.02 / 1.10	1.52 / 1.46	1.75 / 1.86	2.11 / 2.11	2.55 / 2.68
EER/COP	Cooling/Heating	3.92 / 4.09	3.29 / 3.70	3.20 / 3.60	3.36 / 3.79	3.92 / 4.18
Inrush current		A 5	5	5	5	5
Max. current		12	15	15	17	24
Sound power level*1	Indoor	Cooling/Heating	60 / 60	60 / 60	60 / 60	64 / 64
	Outdoor	Cooling/Heating	63 / 63	63 / 63	65 / 64	66 / 66
Sound pressure level*1 ※1	Indoor	Cooling (Hi/Me/Lo)	38 / 36 / 31	38 / 36 / 31	41 / 37 / 32	41 / 37 / 32
		Heating (Hi/Me/Lo)	38 / 36 / 31	38 / 36 / 31	41 / 37 / 32	41 / 37 / 32
	Outdoor	Cooling/Heating	50 / 49	50 / 49	52 / 52	51 / 48
		Cooling/Heating	50 / 49	50 / 49	52 / 52	51 / 48
Air flow ※1	Indoor	Cooling (Hi/Me/Lo)	10 / 9 / 7	10 / 9 / 7	16 / 13 / 10	16 / 13 / 10
		Heating (Hi/Me/Lo)	10 / 9 / 7	10 / 9 / 7	16 / 13 / 10	16 / 13 / 10
	Outdoor	Cooling/Heating	36 / 33	40 / 33	41.5 / 39	60 / 50
		Cooling/Heating	36 / 33	40 / 33	41.5 / 39	60 / 50
Exterior dimensions	Indoor	HeightxWidthxDepth	210 x 1,070 x 690		210 x 1,320 x 690	250 x 1,620 x 690
	Outdoor	HeightxWidthxDepth	640 x 800(+71) x 290		750 x 880(+88) x 340	1,300 x 970 x 370
Net weight	Indoor		28		33	43
	Outdoor		45		60	105
Ref.piping size	Liquid/Gas	ømm	6.35(1/4") / 12.7(1/2")		9.52(3/8") / 15.88(5/8")	
Refrigerant line (one way) length		m	Max.30		Max.50	Max.100
Vertical height differences	Outdoor is higher/lower	m	Max.20 / Max.20		Max.30 / Max.15	
Outdoor operating temperature range	Cooling	°C	-15~46*3		-15~43*3	
	Heating	°C	-20~24		-20~20	
Air filter, Q'ty			Pocket Plastic net x2(Washable)			
Remote control (option)			wired:RC-EX3, RC-E5, RCH-E3 wireless:RCN-E-E2			

		HyperInverter				
Set model name		FDE125VNXVG	FDE140VNXVG	FDE100VSXVG	FDE125VSXVG	FDE140VSXVG
Indoor unit		FDE125VG	FDE140VG	FDE100VG	FDE125VG	FDE140VG
Outdoor unit		FDC125VNX	FDC140VNX	FDC100VSX	FDC125VSX	FDC140VSX
Power source		1 Phase 220-240V, 50Hz / 220V, 60Hz			3 Phase 380-415V, 50Hz / 380V, 60Hz	
Nominal cooling capacity (Min~Max)		kW 12.5 (5.0 ~ 14.0)	14.0 (5.0 ~ 16.0)	10.0 (4.0 ~ 11.2)	12.5 (5.0 ~ 14.0)	14.0 (5.0 ~ 16.0)
Nominal heating capacity (Min~Max)		kW 14.0 (4.0 ~ 17.0)	16.0 (4.0 ~ 18.0)	11.2 (4.0 ~ 16.0)	14.0 (4.0 ~ 18.0)	16.0 (4.0 ~ 20.0)
Power consumption	Cooling/Heating	kW 3.50 / 3.77	4.40 / 4.69	2.55 / 2.68	3.50 / 3.77	4.40 / 4.69
EER/COP	Cooling/Heating	3.57 / 3.71	3.18 / 3.41	3.92 / 4.18	3.57 / 3.71	3.18 / 3.41
Inrush current		A 5	5	5	5	5
Max. current		26	26	15	15	15
Sound power level*1	Indoor	Cooling/Heating	64 / 64	65 / 65	64 / 64	64 / 64
	Outdoor	Cooling/Heating	70 / 70	72 / 72	70 / 70	70 / 70
Sound pressure level*1 ※1	Indoor	Cooling (Hi/Me/Lo)	45 / 40 / 35	45 / 40 / 36	43 / 38 / 34	45 / 40 / 35
		Heating (Hi/Me/Lo)	45 / 40 / 35	45 / 40 / 36	43 / 38 / 34	45 / 40 / 35
	Outdoor	Cooling/Heating	48 / 50	49 / 52	48 / 50	48 / 50
		Cooling/Heating	48 / 50	49 / 52	48 / 50	48 / 50
Air flow ※1	Indoor	Cooling (Hi/Me/Lo)	29 / 23 / 17	29 / 23 / 18	26 / 21 / 16.5	29 / 23 / 17
		Heating (Hi/Me/Lo)	29 / 23 / 17	29 / 23 / 18	26 / 21 / 16.5	29 / 23 / 17
	Outdoor	Cooling/Heating	100 / 100	100 / 100	100 / 100	100 / 100
		Cooling/Heating	100 / 100	100 / 100	100 / 100	100 / 100
Exterior dimensions	Indoor	HeightxWidthxDepth	250 x 1,620 x 690			
	Outdoor	HeightxWidthxDepth	1,300 x 970 x 370			
Net weight	Indoor		43			
	Outdoor		105			
Ref.piping size	Liquid/Gas	ømm	9.52(3/8") / 15.88(5/8")			
Refrigerant line (one way) length		m	Max.100			
Vertical height differences	Outdoor is higher/lower	m	Max.30 / Max.15			
Outdoor operating temperature range	Cooling	°C	-15~43*3			
	Heating	°C	-20~20			
Air filter, Q'ty			Pocket Plastic net x2(Washable)			
Remote control (option)			wired:RC-EX3, RC-E5, RCH-E3 wireless:RCN-E-E2			

※1 Powerful-Hi can be selected.

Sound pressure level: 40/50ZSXVG 46dB(A), 60ZSXVG 47dB(A), 71VNXVG 47dB(A), 100/125VN(S)XVG 48dB(A), 140VN(S)XVG 49dB(A)

Air flow: 40/50ZSXVG 13m³/min, 60ZSXVG 20m³/min, 71VNXVG 20m³/min, 100/125VN(S)XVG 32m³/min, 140VN(S)XVG 34m³/min

NOTES:

The data are measured under the following conditions(ISO-T1).

Cooling:Indoor temp. of 27°CDB, 19°CWB, and outdoor temp. of 35°CDB. Heating:Indoor temp. of 20°CDB, and outdoor temp. of 7°CDB, 6°CWB.

*1 : Indicates the value in an anechoic chamber. During operation these values are somewhat higher due to ambient conditions.

*2 : The values are for one indoor unit operation.

*3 : If a cooling operation is conducted when the outdoor air temperature is -5°C or lower, the outdoor unit should be installed at a place where it is not influenced by natural wind. If wind blows, the low pressure will drop and compressor frequency will increase, this will cause the capacity to drop and may cause the unit to break down.

SPECIFICATIONS

The values are for simultaneous Multi operation.

Set model name		Hyper Inverter				
		FDE71VNXPVG	FDE100VNXPVG	FDE125VNXPVG	FDE140VNXPVG	FDE140VNXTVG
		Twin			Triple	
Indoor unit		FDE40VG	FDE50VG	FDE60VG	FDE71VG	FDE50VG
Outdoor unit		FDC71VNX	FDC100VNX	FDC125VNX	FDC140VNX	FDC140VNX
Power source		1 Phase 220-240V, 50Hz / 220V, 60Hz				
Nominal cooling capacity (Min~Max)	kW	7.1 (3.2 ~ 8.0)	10.0 (4.0 ~ 11.2)	12.5 (5.0 ~ 14.0)	14.0 (5.0 ~ 16.0)	14.0 (5.0 ~ 16.0)
Nominal heating capacity (Min~Max)	kW	8.0 (3.6 ~ 9.0)	11.2 (4.0 ~ 12.5)	14.0 (4.0 ~ 17.0)	16.0 (4.0 ~ 18.0)	16.0 (4.0 ~ 18.0)
Power consumption	Cooling/Heating	2.05 / 2.35	3.00 / 3.39	3.97 / 3.70	4.67 / 4.58	4.66 / 4.53
EER/COP	Cooling/Heating	3.46 / 3.40	3.33 / 3.30	3.15 / 3.78	3.00 / 3.49	3.00 / 3.53
Inrush current	A	5	5	5	5	5
Max. current		17	24	26	26	26
Sound power level*1	Indoor*2	Cooling/Heating	60 / 60	60 / 60	60 / 60	60 / 60
	Outdoor	Cooling/Heating	66 / 66	70 / 70	70 / 70	72 / 72
Sound pressure level*1 *2	Indoor*2	Cooling (Hi/Me/Lo)	38 / 36 / 31	38 / 36 / 31	41 / 37 / 32	41 / 37 / 32
		Heating (Hi/Me/Lo)	38 / 36 / 31	38 / 36 / 31	41 / 37 / 32	41 / 37 / 32
	Outdoor	Cooling/Heating	51 / 48	48 / 50	48 / 50	49 / 52
Air flow **2	Indoor*2	Cooling (Hi/Me/Lo)	10 / 9 / 7	10 / 9 / 7	16 / 13 / 10	16 / 13 / 10
		Heating (Hi/Me/Lo)	10 / 9 / 7	10 / 9 / 7	16 / 13 / 10	16 / 13 / 10
	Outdoor	Cooling/Heating	60 / 50	100 / 100	100 / 100	100 / 100
Exterior dimensions	Indoor	HeightxWidthxDepth	210 x 1,070 x 690		210 x 1,320 x 690	
	Outdoor		750 x 880(+88) x 340		1,300 x 970 x 370	
Net weight	Indoor		28		33	
	Outdoor		60		105	
Ref.piping size	Liquid/Gas			9.52(3/8") / 15.88(5/8")		
Refrigerant line (one way) length	m	Max. 50	Max. 100			
Vertical height differences	Outdoor is higher/lower	Max.30 / Max.15				
Outdoor operating temperature range	Cooling	-15~43*3				
	Heating	-20~20				
Air filter, Q'ty	Pocket plastic net x 2(Washable)					
Remote control (option)	wired:RC-EX3, RC-E5, RCH-E3 wireless:RCN-E-E2					

The values are for simultaneous Multi operation.

Set model name		Hyper Inverter				
		FDE100VSXPVG	FDE125VSXPVG	FDE140VSXPVG	FDE140VSXTVG	
		Twin		Triple		
Indoor unit		FDE50VG	FDE60VG	FDE71VG	FDE50VG	
Outdoor unit		FDC100VSX	FDC125VSX	FDC140VSX	FDC140VSX	
Power source		3 Phase 380-415V, 50Hz / 380V, 60Hz				
Nominal cooling capacity (Min~Max)	kW	10.0 (4.0 ~ 11.2)	12.5 (5.0 ~ 14.0)	14.0 (5.0 ~ 16.0)	14.0 (5.0 ~ 16.0)	
Nominal heating capacity (Min~Max)	kW	11.2 (4.0 ~ 16.0)	14.0 (4.0 ~ 18.0)	16.0 (4.0 ~ 20.0)	16.0 (4.0 ~ 20.0)	
Power consumption	Cooling/Heating	3.00 / 3.39	3.97 / 3.70	4.67 / 4.58	4.66 / 4.53	
EER/COP	Cooling/Heating	3.33 / 3.30	3.15 / 3.78	3.00 / 3.49	3.00 / 3.53	
Inrush current	A	5	5	5	5	
Max. current		15	15	15	15	
Sound power level*1	Indoor*2	Cooling/Heating	60 / 60	60 / 60	60 / 60	
	Outdoor	Cooling/Heating	70 / 70	70 / 70	72 / 72	
Sound pressure level*1 *2	Indoor*2	Cooling (Hi/Me/Lo)	38 / 36 / 31	41 / 37 / 32	41 / 37 / 32	
		Heating (Hi/Me/Lo)	38 / 36 / 31	41 / 37 / 32	41 / 37 / 32	
	Outdoor	Cooling/Heating	48 / 50	48 / 50	49 / 52	
Air flow **2	Indoor*2	Cooling (Hi/Me/Lo)	10 / 9 / 7	16 / 13 / 10	16 / 13 / 10	
		Heating (Hi/Me/Lo)	10 / 9 / 7	16 / 13 / 10	16 / 13 / 10	
	Outdoor	Cooling/Heating	100 / 100	100 / 100	100 / 100	
Exterior dimensions	Indoor	HeightxWidthxDepth	210 x 1,070 x 690		210 x 1,320 x 690	
	Outdoor				1,300 x 970 x 370	
Net weight	Indoor		28		33	
	Outdoor		60		105	
Ref.piping size	Liquid/Gas			9.52(3/8") / 15.88(5/8")		
Refrigerant line (one way) length	m	Max.100				
Vertical height differences	Outdoor is higher/lower	Max.30 / Max.15				
Outdoor operating temperature range	Cooling	-15~43*3				
	Heating	-20~20				
Air filter, Q'ty	Pocket plastic net x 2(Washable)					
Remote control (option)	wired:RC-EX3, RC-E5, RCH-E3 wireless:RCN-E-E2					

**2 Powerful-Hi can be selected.

Sound pressure level: 71/100VN(S)XPVG 46dB(A), 125/140VN(S)XPVG 47dB(A), 140VNXTVG 46dB(A)

Air flow: 71/100VN(S)XPVG 13m³/min, 125/140VN(S)XPVG 20m³/min, 140VNXTVG 13m³/min

SPECIFICATIONS

		Micro Inverter					
Set model name		FDE100VNVG	FDE125VNVG	FDE140VNVG	FDE100VSVG	FDE125VSVG	FDE140VSVG
Indoor unit		FDE100VG	FDE125VG	FDE140VG	FDE100VG	FDE125VG	FDE140VG
Outdoor unit		FDC100VN	FDC125VN	FDC140VN	FDC100VS	FDC125VS	FDC140VS
Power source		1 Phase 220-240V, 50Hz / 220V, 60Hz			3 Phase 380-415V, 50Hz / 380V, 60Hz		
Nominal cooling capacity (Min~Max)		kW 10.0 (4.0 ~ 11.2)	12.5 (5.0 ~ 14.0)	14.0 (5.0 ~ 14.5)	10.0 (4.0 ~ 11.2)	12.5 (5.0 ~ 14.0)	14.0 (5.0 ~ 14.5)
Nominal heating capacity (Min~Max)		kW 11.2 (4.0 ~ 12.5)	14.0 (4.0 ~ 16.0)	16.0 (4.0 ~ 16.5)	11.2 (4.0 ~ 12.5)	14.0 (4.0 ~ 16.0)	16.0 (4.0 ~ 16.5)
Power consumption	Cooling/Heating	kW 2.85 / 2.90	4.45 / 4.08	5.80 / 4.92	2.85 / 2.90	4.45 / 4.08	5.80 / 4.92
EER/COP	Cooling/Heating	3.51 / 3.86	2.81 / 3.43	2.41 / 3.25	3.51 / 3.86	2.81 / 3.43	2.41 / 3.25
Inrush current		A 5	5	5	5	5	5
Max. current		24	24	24	15	15	15
Sound power level*1	Indoor	Cooling/Heating	64 / 64	64 / 64	65 / 65	64 / 64	64 / 64
	Outdoor	Cooling/Heating	70 / 70	72 / 72	73 / 73	70 / 70	72 / 72
Sound pressure level*1 ※1	Indoor	Cooling (Hi/Me/Lo)	dB(A) 43 / 38 / 34	45 / 40 / 35	45 / 40 / 36	43 / 38 / 34	45 / 40 / 35
		Heating (Hi/Me/Lo)	43 / 38 / 34	45 / 40 / 35	45 / 40 / 36	43 / 38 / 34	45 / 40 / 35
Air flow ※1	Indoor	Cooling (Hi/Me/Lo)	m³/min 26 / 21 / 16.5	29 / 23 / 17	29 / 23 / 18	26 / 21 / 16.5	29 / 23 / 17
		Heating (Hi/Me/Lo)	26 / 21 / 16.5	29 / 23 / 17	29 / 23 / 18	26 / 21 / 16.5	29 / 23 / 17
	Outdoor	Cooling/Heating	75 / 73	75 / 73	75 / 73	75 / 73	75 / 73
Exterior dimensions	Indoor	HeightxWidthxDepth	mm 250 x 1,620 x 690				
	Outdoor		845 x 970 x 370				
Net weight	Indoor		kg 43				
	Outdoor		81	83			
Ref.piping size	Liquid/Gas	ømm	9.52(3/8") / 15.88(5/8")				
Refrigerant line (one way) length		m	Max.50				
Vertical height differences	Outdoor is higher/lower	m	Max.30 / Max.15				
Outdoor operating temperature range	Cooling	°C	-15~43*3				
	Heating	-20~20					
Air filter, Q'ty			Pocket Plastic net x2(Washable)				
Remote control (option)			wired:RC-EX3, RC-E5, RCH-E3 wireless:RCN-E-E2				

The values are for simultaneous Multi operation.

		Micro Inverter					
Set model name		FDE100VNPVG	FDE125VNPVG	FDE140VNPVG	FDE140VNTVG	FDE100VSPVG	FDE125VSPVG
		Twin			Triple	Twin	
Indoor unit		FDE50VG	FDE60VG	FDE71VG	FDE50VG	FDE50VG	FDE60VG
Outdoor unit		FDC100VN	FDC125VN	FDC140VN	FDC140VN	FDC100VS	FDC125VS
Power source		1 Phase 220-240V, 50Hz / 220V, 60Hz			3 Phase 380-415V, 50Hz / 380V, 60Hz		
Nominal cooling capacity (Min~Max)		kW 10.0 (4.0 ~ 11.2)	12.5 (5.0 ~ 14.0)	14.0 (5.0 ~ 14.5)	14.0 (5.0 ~ 14.5)	10.0 (4.0 ~ 11.2)	12.5 (5.0 ~ 14.0)
Nominal heating capacity (Min~Max)		kW 11.2 (4.0 ~ 12.5)	14.0 (4.0 ~ 16.0)	16.0 (4.0 ~ 16.5)	16.0 (4.0 ~ 16.5)	11.2 (4.0 ~ 12.5)	14.0 (4.0 ~ 16.0)
Power consumption	Cooling/Heating	kW 3.12 / 3.49	4.16 / 3.80	4.87 / 4.59	4.88 / 4.57	3.12 / 3.49	4.16 / 3.80
EER/COP	Cooling/Heating	3.21 / 3.21	3.00 / 3.68	2.87 / 3.49	2.87 / 3.50	3.21 / 3.21	3.00 / 3.68
Inrush current		A 5	5	5	5	5	5
Max. current		24	24	24	24	15	15
Sound power level*1	Indoor*2	Cooling/Heating	60 / 60	60 / 60	60 / 60	60 / 60	60 / 60
	Outdoor	Cooling/Heating	70 / 70	72 / 72	73 / 73	73 / 73	70 / 70
Sound pressure level*1 ※1	Indoor*2	Cooling (Hi/Me/Lo)	dB(A) 38 / 36 / 31	41 / 37 / 32	41 / 37 / 32	38 / 36 / 31	41 / 37 / 32
		Heating (Hi/Me/Lo)	38 / 36 / 31	41 / 37 / 32	41 / 37 / 32	38 / 36 / 31	41 / 37 / 32
Air flow ※1	Indoor*2	Cooling (Hi/Me/Lo)	m³/min 10 / 9 / 7	16 / 13 / 10	16 / 13 / 10	10 / 9 / 7	16 / 13 / 10
		Heating (Hi/Me/Lo)	10 / 9 / 7	16 / 13 / 10	16 / 13 / 10	10 / 9 / 7	16 / 13 / 10
	Outdoor	Cooling/Heating	75 / 73	75 / 73	75 / 73	75 / 73	75 / 73
Exterior dimensions	Indoor	HeightxWidthxDepth	mm 210 x 1,070 x 690		210 x 1,320 x 690		210 x 1,320 x 690
	Outdoor		845 x 970 x 370				
Net weight	Indoor		kg 28		33		28
	Outdoor		81	83			
Ref.piping size	Liquid/Gas	ømm	9.52(3/8") / 15.88(5/8")				
Refrigerant line (one way) length		m	Max. 50				
Vertical height differences	Outdoor is higher/lower	m	Max.30 / Max.15				
Outdoor operating temperature range	Cooling	°C	-15~43*3				
	Heating	-20~20					
Air filter, Q'ty			Pocket plastic net x 2(Washable)				
Remote control (option)			wired:RC-EX3, RC-E5, RCH-E3 wireless:RCN-E-E2				

※1 Powerful-Hi can be selected.

Sound pressure level: 100/125VN(S)VG 48dB(A), 140VN(S)VG 49dB(A), 100VN(S)PVG 46dB(A), 125VN(S)PVG 47dB(A), 140VNPVG 47dB(A), 140VNTVG 46dB(A)
Air flow: 100/125VN(S)VG 32m³/min, 140VN(S)VG 34m³/min, 100VN(S)PVG 13m³/min, 125VN(S)PVG 20m³/min, 140VNPVG 20m³/min, 140VNTVG 13m³/min

NOTES:

The data are measured under the following conditions(ISO-T1).
Cooling:Indoor temp. of 27°CDB, 19°CWB, and outdoor temp. of 35°CDB. Heating:Indoor temp. of 20°CDB, and outdoor temp. of 7°CDB, 6°CWB.
*1 : Indicates the value in an anechoic chamber. During operation these values are somewhat higher due to ambient conditions.
*2 : The values are for one indoor unit operation.
*3 : If a cooling operation is conducted when the outdoor air temperature is -5°C or lower, the outdoor unit should be installed at a place where it is not influenced by natural wind. If wind blows, the low pressure will drop and compressor frequency will increase, this will cause the capacity to drop and may cause the unit to break down.

SPECIFICATIONS

The values are for simultaneous Multi operation.

Set model name		Micro Inverter					
		FDE140VSPVG	FDE200VSAPVG	FDE250VSAPVG	FDE140VSTVG	FDE200VSATVG	
		Twin			Triple		
Indoor unit		FDE71VG	FDE100VG	FDE125VG	FDE50VG	FDE71VG	
Outdoor unit		FDC140VS	FDC200VSA	FDC250VSA	FDC140VS	FDC200VSA	
Power source		3 Phase 380-415V, 50Hz / 380V, 60Hz					
Nominal cooling capacity (Min~Max)	kW	14.0 (5.0 ~ 14.5)	19.0 (5.2 ~ 22.4)	24.0 (6.9 ~ 28.0)	14.0 (5.0 ~ 14.5)	19.0 (5.2 ~ 22.4)	
Nominal heating capacity (Min~Max)	kW	16.0 (4.0 ~ 16.5)	22.4 (3.3 ~ 25.0)	27.0 (5.5 ~ 31.5)	16.0 (4.0 ~ 16.5)	22.4 (3.3 ~ 25.0)	
Power consumption	Cooling/Heating	kW	4.87 / 4.59	6.34 / 6.10	8.52 / 7.54	4.88 / 4.57	6.33 / 5.94
EER/COP	Cooling/Heating		2.87 / 3.49	3.00 / 3.67	2.82 / 3.58	2.87 / 3.50	3.00 / 3.77
Inrush current		A	5	5	5	5	5
Max. current			15	20	21	15	20
Sound power level*1	Indoor*2	Cooling/Heating	60 / 60	64 / 64	64 / 64	60 / 60	60 / 60
	Outdoor	Cooling/Heating	73 / 73	72 / 74	73 / 75	73 / 73	72 / 74
Sound pressure level*1 *2	Indoor*2	Cooling (Hi/Me/Lo)	41 / 37 / 32	43 / 38 / 44	45 / 40 / 35	38 / 36 / 31	41 / 37 / 32
	Outdoor	Heating (Hi/Me/Lo)	41 / 37 / 32	43 / 38 / 44	45 / 40 / 35	38 / 36 / 31	41 / 37 / 32
Air flow *2	Indoor*2	Cooling (Hi/Me/Lo)	16 / 13 / 10	26 / 21 / 16.5	29 / 23 / 17	10 / 9 / 7	16 / 13 / 10
	Outdoor	Heating (Hi/Me/Lo)	16 / 13 / 10	26 / 21 / 16.5	29 / 23 / 17	10 / 9 / 7	16 / 13 / 10
Exterior dimensions	Indoor	HeightxWidthxDepth	210 x 1,320 x 690	250 x 1,620 x 690		210 x 1,070 x 690	210 x 1,320 x 690
	Outdoor		845 x 970 x 370	1,300 x 970 x 370	1,505 x 970 x 370	845 x 970 x 370	1,300 x 970 x 370
Net weight	Indoor		33	43		28	33
	Outdoor		83	115	143	83	115
Ref.piping size	Liquid/Gas	ømm	9.52(3/8") / 15.88(5/8")	9.52(3/8") / 22.22(7/8")	12.7(1/2") / 22.22(7/8")	9.52(3/8") / 15.88(5/8")	9.52(3/8") / 22.22(7/8")
Refrigerant line (one way) length		m	Max.50	Max.70		Max.50	Max.70
Vertical height differences	Outdoor is higher/lower	m	Max.30 / Max.15				
Outdoor operating temperature range	Cooling	°C	-15~43*3	-15~50*3		-15~43*3	-15~50*3
	Heating		-20~20	-15~20		-20~20	-15~20
Air filter, Q'ty			Pocket plastic net x 2(Washable)				
Remote control (option)			wired:RC-EX3, RC-E5, RCH-E3 wireless:RCN-E-E2				

The values are for simultaneous Multi operation.(except Standard Inverter)

Set model name		Micro Inverter		Standard Inverter			
		FDE200VSADVG	FDE250VSADVG	FDE71VNPVG	FDE90VNPVG	FDE100VNP1VG	
		Double Twin					
Indoor unit		FDE50VG	FDE60VG	FDE71VG	FDE100VG	FDE100VG	
Outdoor unit		FDC200VSA	FDC250VSA	FDC71VNP	FDC90VNP	FDC100VNP	
Power source		3 Phase 380-415V, 50Hz / 380V, 60Hz		1 Phase 220-240V, 50Hz / 220V, 60Hz			
Nominal cooling capacity (Min~Max)	kW	19.0 (5.2 ~ 22.4)	24.0 (6.9 ~ 28.0)	7.1 (1.4 ~ 7.1)	9.0 (1.9 ~ 9.0)	10.0 (2.8 ~ 11.2)	
Nominal heating capacity (Min~Max)	kW	22.4 (3.3 ~ 25.0)	27.0 (5.5 ~ 31.5)	7.1 (1.0 ~ 7.1)	9.0 (1.5 ~ 9.0)	11.2 (2.5 ~ 12.5)	
Power consumption	Cooling/Heating	kW	6.90 / 7.10	8.00 / 7.02	2.50 / 1.96	2.75 / 2.22	2.66 / 2.94
EER/COP	Cooling/Heating		2.75 / 3.15	3.00 / 3.85	2.84 / 3.62	3.27 / 4.05	3.76 / 3.81
Inrush current		A	5	5	5	5	5
Max. current			20	21	14.5	18.0	21.0
Sound power level*1	Indoor*2	Cooling/Heating	60 / 60	60 / 60	60 / 60	64 / 64	64 / 64
	Outdoor	Cooling/Heating	72 / 74	73 / 75	67 / 67	69 / 69	70 / 70
Sound pressure level*1 *2	Indoor*2	Cooling (Hi/Me/Lo)	38 / 36 / 31	41 / 37 / 32	41 / 37 / 32	43 / 38 / 34	43 / 38 / 34
	Outdoor	Heating (Hi/Me/Lo)	38 / 36 / 31	41 / 37 / 32	41 / 37 / 32	43 / 38 / 34	43 / 38 / 34
Air flow *2	Indoor*2	Cooling (Hi/Me/Lo)	10 / 9 / 7	16 / 13 / 10	16 / 13 / 10	26 / 21 / 16.5	26 / 21 / 16.5
	Outdoor	Heating (Hi/Me/Lo)	10 / 9 / 7	16 / 13 / 10	16 / 13 / 10	26 / 21 / 16.5	26 / 21 / 16.5
Exterior dimensions	Indoor	HeightxWidthxDepth	210 x 1,070 x 690	210 x 1,320 x 690	210 x 1,320 x 690	250 x 1,620 x 690	
	Outdoor		1,300 x 970 x 370	1,505 x 970 x 370	640 x 800(+71) x 290	750 x 880(+88) x 340	845 x 970 x 370
Net weight	Indoor		28	33	33	43	
	Outdoor		115	143	45	57	70
Ref.piping size	Liquid/Gas	ømm	9.52(3/8") / 22.22(7/8")	12.7(1/2") / 22.22(7/8")	6.35(1/4") / 12.7(1/2")	6.35(1/4") / 15.88(5/8")	9.52(3/8") / 15.88(5/8")
Refrigerant line (one way) length		m	Max.70			Max.30	
Vertical height differences	Outdoor is higher/lower	m	Max.30 / Max.15			Max.20 / Max.20	
Outdoor operating temperature range	Cooling	°C	-15~50*3			-15~46*3	
	Heating		-15~20			-15~20	
Air filter, Q'ty			Pocket plastic net x 2(Washable)			Pocket Plastic net x2(Washable)	
Remote control (option)			wired:RC-EX3, RC-E5, RCH-E3 wireless:RCN-E-E2			wired:RC-EX3, RC-E5, RCH-E3 wireless:RCN-E-E2	

*2 Powerful-Hi can be selected.

Sound pressure level: 140VSPVG 47dB(A), 200/250VSAPVG 48dB(A), 140VSTVG 46dB(A), 200VSATVG 47dB(A), 200VSADVG 46dB(A), 250VSADVG 47dB(A), 71VNPVG 47dB(A), 90VNPVG 48dB(A), 100VNP1VG 48dB(A)

Air flow: 140VSPVG 20m³/min, 200/250VSAPVG 32m³/min, 140VSTVG 13m³/min, 200VSATVG 20m³/min, 200VSADVG 13m³/min, 250VSADVG 20m³/min, 71VNPVG 20m³/min, 90VNPVG 32m³/min, 100VNP1VG 32m³/min