

# FDU



FDU 71/100/125/140



FDU 200/250  
Tropical Usage Mode

Remote control (Option)

NEW

Wired

NEW

Wireless



RC-EX3



RC-E5



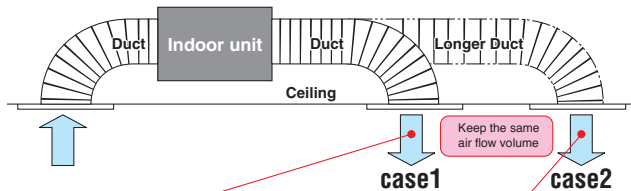
RCH-E3



RCN-KIT4-E2

Point 1

## Automatic external static pressure (E.S.P.) control



Setting No.	No.8	No.9	No.10	No.11	No.12	No.13	No.14	No.15
E.S.P.	80Pa	90Pa	100Pa	110Pa	120Pa	130Pa	140Pa	150Pa

\* Range of 80~150 Pa is set at ex-factory default.  
Range of 10~200 Pa is available by setting SW8-4 switch on at site.

<Expansion of external static pressure range>  
Previous 10~130Pa → Current 10~200Pa

You can set External Static Pressure (E.S.P.) by method of manual setting on remote control. Indoor unit will control fan-speed to keep rated air flow volume at each fan speed setting. You can set required E.S.P. by wired remote control that calculated with the set air flow rate and pressure loss of the duct connected.

E.S.P. button

External Static Pressure (E.S.P.) can be set by E.S.P. button.



RC-E5

Point 2

## More quiet noise

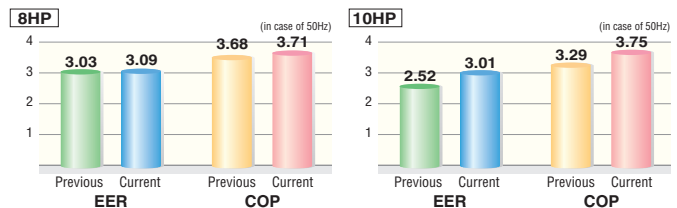
Thanks to use of DC fan motor, fan steps increase from two to four and quiet operation is achieved.(FDU200/250)

	Previous	Current	Lo mode
FDU71	37	25	12dB(A) less!!
FDU100	38	30	8dB(A) less!!
FDU200	51	45	6dB(A) less!!

Point 3

## High efficiency

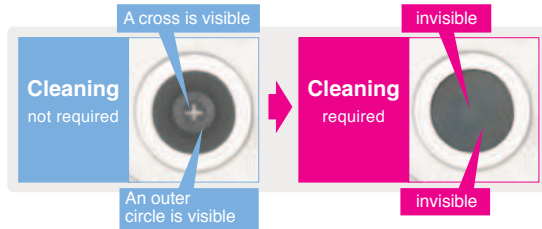
Energy efficiency is improved by use of DC fan motor & high efficient heat exchanger.



**Point 4**

## Transparent inspection window

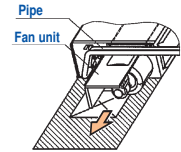
Dirt condition of the bottom of a drain pan can be checked through this transparent inspection window without removing drain pan.



**Point 5**

## Improvement of the serviceability

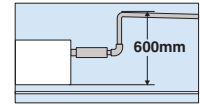
Fan unit (impeller and motor) can be pulled out from the right side of the unit. Maintenance can be available from the right side or the bottom side.



**Point 6**

## Enhanced installation workability

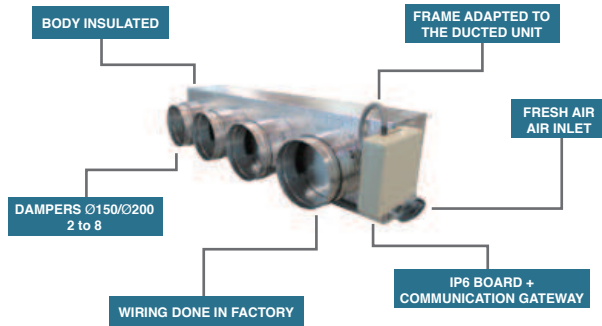
600mm Drain Pump is mounted in FDU71/100/125/140. The indoor unit is completely hidden in the ceiling, so this is suitable for spaces with classy interior decoration.



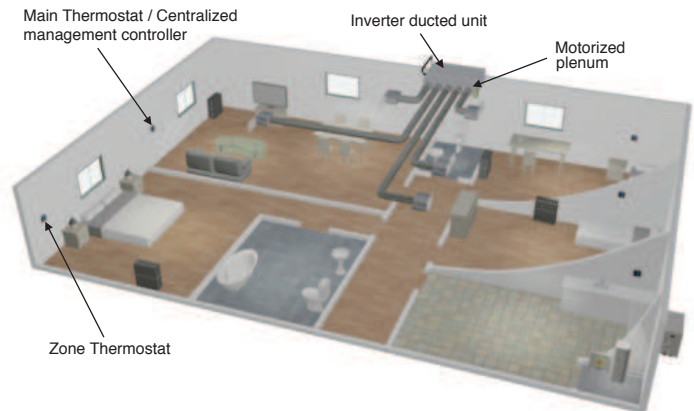
### Round duct adapter

Company : AIRZONE  
URL : <http://www.airzone.es>

All-in-one solution: the whole zoning system in a plug&play device perfectly adapted to the indoor DX unit



### Main components



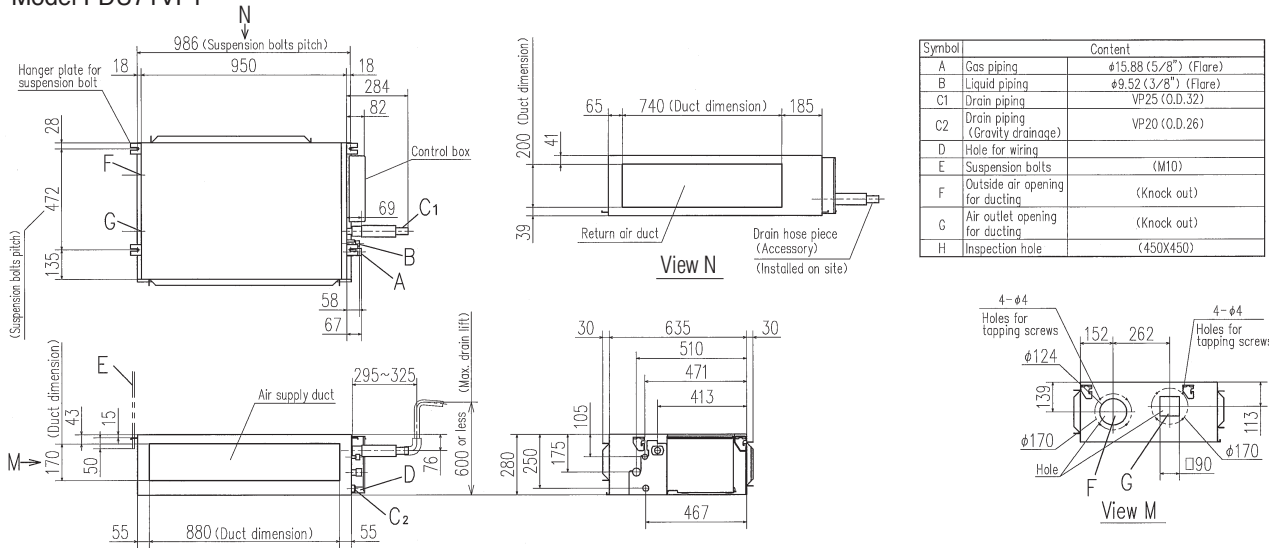
### OUTDOOR UNIT

FDC	Hyper Inverter		Micro Inverter		
	71VNX	100~140VN(S)X	100~140VN(S)	200VSA	250VSA
model					
Chargeless	30m			30m	
Height x Width x Depth (mm)	750 x 880(+88) x 340	1,300 x 970 x 370	845 x 970 x 370	1,300 x 970 x 370	1,505 x 970 x 370

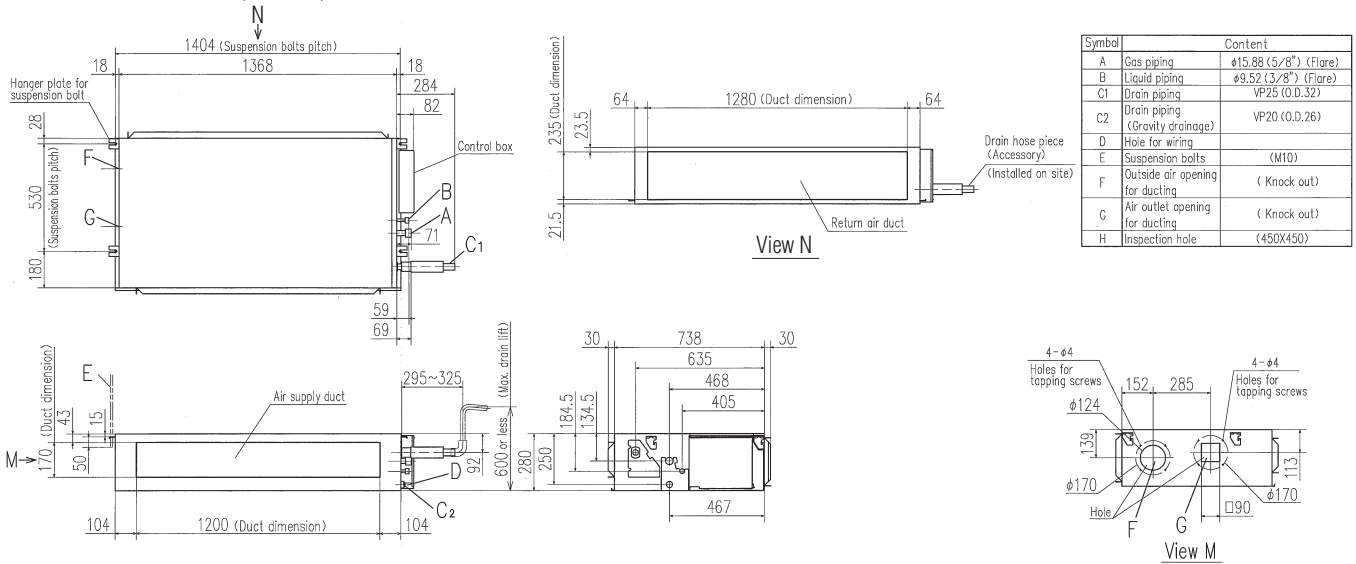
FDC	Standard Inverter		
	71VNP	90VNP	100VNP
model			
Chargeless	15m		
Height x Width x Depth (mm)	640 x 800(+71) x 290	750 x 880(+88) x 340	845 x 970 x 370

## DIMENSIONS (Unit:mm)

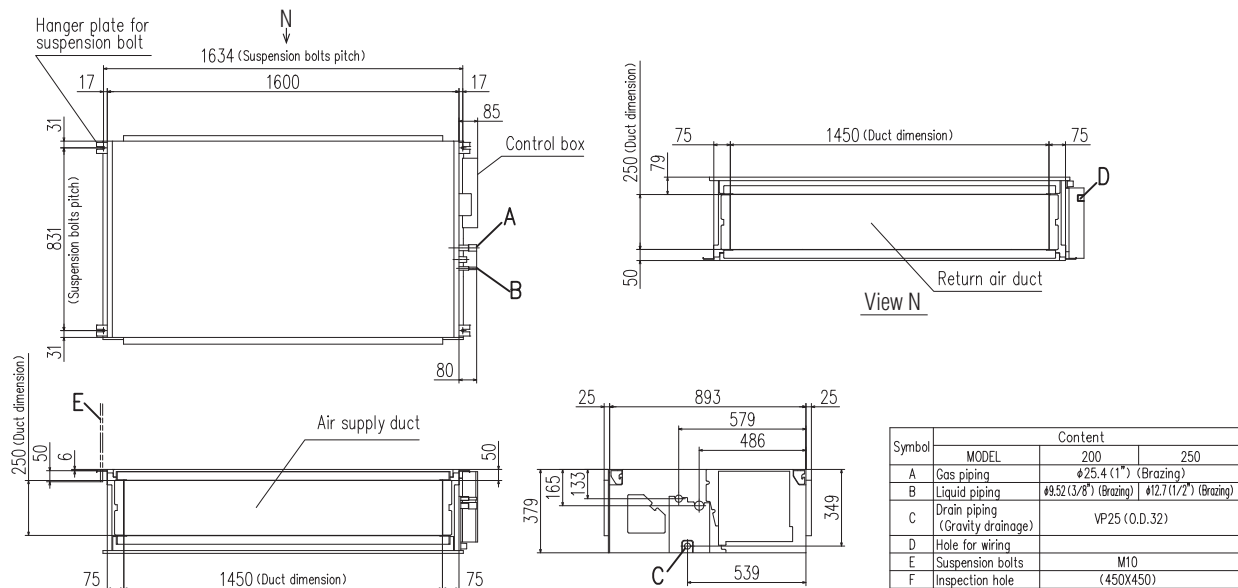
### Model FDU71VF1



### Models FDU100VF2, 125VF, 140VF



### Models FDU200VG, 250VG



## SPECIFICATIONS

		<i>Hyper Inverter</i>			
Set model name		FDU71VNXVF1	FDU100VNXVF2	FDU125VNXVF	FDU140VNXVF
Indoor unit		FDU71VF1	FDU100VF2	FDU125VF	FDU140VF
Outdoor unit		FDC71VNX	FDC100VNX	FDC125VNX	FDC140VNX
Power source		1 Phase 220-240V, 50Hz / 220V, 60Hz			
Nominal cooling capacity (Min~Max)		kW 7.1 (3.2 ~ 8.0)	10.0 (4.0 ~ 11.2)	12.5 (5.0 ~ 14.0)	14.0 (5.0 ~ 16.0)
Nominal heating capacity (Min~Max)		kW 8.0 (3.6 ~ 9.0)	11.2 (4.0 ~ 12.5)	14.0 (4.0 ~ 17.0)	16.0 (4.0 ~ 18.0)
Power consumption		Cooling/Heating kW 2.05 / 2.01	2.68 / 3.02	3.49 / 3.77	4.28 / 4.42
EER/COP		Cooling/Heating 3.46 / 3.98	3.73 / 3.71	3.58 / 3.71	3.27 / 3.62
Inrush current		A 5	5	5	5
Max. current		17	25	29	30
Sound power level*1	Indoor	Cooling/Heating	65 / 65	67 / 67	70 / 70
	Outdoor	Cooling/Heating	66 / 66	70 / 70	72 / 72
Sound pressure level*1 ※1	Indoor	Cooling (Hi/Me/Lo)	33 / 29 / 25	38 / 36 / 30	40 / 34 / 29
		Heating (Hi/Me/Lo)	33 / 29 / 25	38 / 36 / 30	40 / 34 / 29
	Outdoor	Cooling/Heating	51 / 48	48 / 50	48 / 50
		Cooling/Heating	19 / 15 / 10	28 / 25 / 19	32 / 26 / 20
Air flow ※1	Indoor	Cooling (Hi/Me/Lo)	19 / 15 / 10	28 / 25 / 19	35 / 28 / 22
		Heating (Hi/Me/Lo)	19 / 15 / 10	28 / 25 / 19	35 / 28 / 22
	Outdoor	Cooling/Heating	60 / 50	100 / 100	100 / 100
External static pressure*2		Pa	Standard:35 Max:200	Standard:60 Max:200	
Exterior dimensions	Indoor	HeightxWidthxDepth	mm 280 x 950 x 635	280 x 1,370 x 740	
	Outdoor		750 x 880(+88) x 340	1,300 x 970 x 370	
Net weight	Indoor		kg 34	54	
	Outdoor		60	105	
Ref.piping size		Liquid/Gas	ømm 9.52(3/8") / 15.88(5/8")		
Refrigerant line (one way) length		m	Max.50	Max.100	
Vertical height differences		Outdoor is higher/lower	m Max.30 / Max.15		
Outdoor operating temperature range	Cooling	°C	-15~43*3		
	Heating		-20~20		
Air filter		Procure locally			
Remote control (option)		wired:RC-EX3, RC-E5, RCH-E3 wireless:RCN-KIT4-E2			

		<i>Hyper Inverter</i>		
Set model name		FDU100VSXVF2	FDU125VSXVF	FDU140VSXVF
Indoor unit		FDU100VF2	FDU125VF	FDU140VF
Outdoor unit		FDC100VSX	FDC125VSX	FDC140VSX
Power source		3 Phase 380-415V, 50Hz / 380V, 60Hz		
Nominal cooling capacity (Min~Max)		kW 10.0 (4.0 ~ 11.2)	12.5 (5.0 ~ 14.0)	14.0 (5.0 ~ 16.0)
Nominal heating capacity (Min~Max)		kW 11.2 (4.0 ~ 16.0)	14.0 (4.0 ~ 18.0)	16.0 (4.0 ~ 20.0)
Power consumption		Cooling/Heating kW 2.68 / 3.02	3.49 / 3.77	4.28 / 4.42
EER/COP		Cooling/Heating 3.73 / 3.71	3.58 / 3.71	3.27 / 3.62
Inrush current		A 5	5	5
Max. current		16	18	19
Sound power level*1	Indoor	Cooling/Heating	65 / 65	67 / 67
	Outdoor	Cooling/Heating	70 / 70	70 / 70
Sound pressure level*1 ※1	Indoor	Cooling (Hi/Me/Lo)	38 / 36 / 30	40 / 34 / 29
		Heating (Hi/Me/Lo)	38 / 36 / 30	40 / 34 / 29
	Outdoor	Cooling/Heating	48 / 50	48 / 50
		Cooling/Heating	28 / 25 / 19	32 / 26 / 20
Air flow ※1	Indoor	Cooling (Hi/Me/Lo)	28 / 25 / 19	35 / 28 / 22
		Heating (Hi/Me/Lo)	28 / 25 / 19	35 / 28 / 22
	Outdoor	Cooling/Heating	100 / 100	100 / 100
External static pressure*2		Pa	Standard:60 Max:200	
Exterior dimensions	Indoor	HeightxWidthxDepth	mm 280 x 1,370 x 740	
	Outdoor		1,300 x 970 x 370	
Net weight	Indoor		kg 54	
	Outdoor		105	
Ref.piping size		Liquid/Gas	ømm 9.52(3/8") / 15.88(5/8")	
Refrigerant line (one way) length		m	Max.100	
Vertical height differences		Outdoor is higher/lower	m Max.30 / Max.15	
Outdoor operating temperature range	Cooling	°C	-15~43*3	
	Heating		-20~20	
Air filter		Procure locally		
Remote control (option)		wired:RC-EX3, RC-E5, RCH-E3 wireless:RCN-KIT4-E2		

※1 Powerful-Hi can be selected.

Sound pressure level: 71VNXVF1 38dB(A), 100VN(S)XVF2 44dB(A), 125VN(S)XVF 45dB(A), 140VN(S)XVF 47dB(A)

Air flow: 71VNXVF1 24m<sup>3</sup>/min, 100VN(S)XVF2 36m<sup>3</sup>/min, 125VN(S)XVF 39m<sup>3</sup>/min, 140VN(S)XVF 48m<sup>3</sup>/min

### NOTES:

The data are measured under the following conditions(ISO-T1).

Cooling:Indoor temp. of 27°CDB, 19°CWB, and outdoor temp. of 35°CDB. Heating:Indoor temp. of 20°CDB, and outdoor temp. of 7°CDB, 6°CWB.

\*1 : Indicates the value in an anechoic chamber. During operation these values are somewhat higher due to ambient conditions.

\*2 : External static pressure is changeable to be set by the remote control. MAX external static pressure is "High static pressure" setting. The values of sound pressure level become 5dB(A) higher at external static pressure of 200Pa.

\*3 : If a cooling operation is conducted when the outdoor air temperature is -5°C or lower, the outdoor unit should be installed at a place where it is not influenced by natural wind. If wind blows, the low pressure will drop and compressor frequency will increase, this will cause the capacity to drop and may cause the unit to break down.