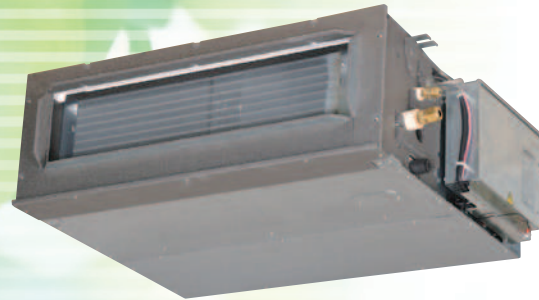
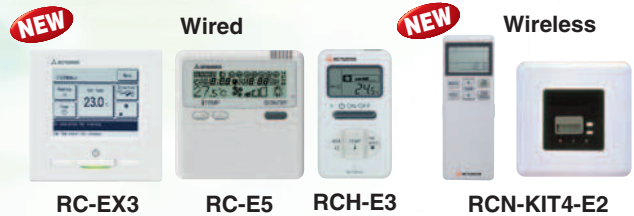


# FDUM



FDUM 40/50/60/71/100/125/140

### Remote control (Option)

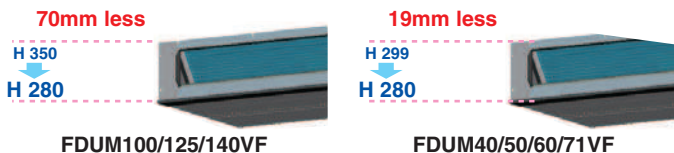


Filter kit (option)

UM-FL1EF : for 40, 50  
 UM-FL2EF : for 60, 71  
 UM-FL3EF : for 100, 125, 140  
 external static pressure loss:5Pa

## Point 1 Thin design

The height of all FDUM models is only 280mm.



## Point 2 Automatic external static pressure (E.S.P.) control

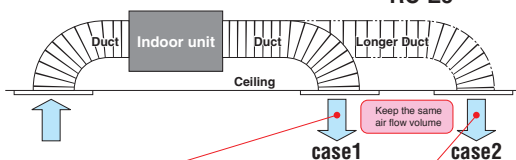
You can set External Static Pressure (E.S.P.) by method of manual setting on remote control. Indoor unit will control fan-speed to keep rated air flow volume at each fan speed setting. You can set required E.S.P. by wired remote control that calculated with the set air flow rate and pressure loss of the duct connected.

### E.S.P. button

External Static Pressure (E.S.P.) can be set by E.S.P. button.



RC-E5



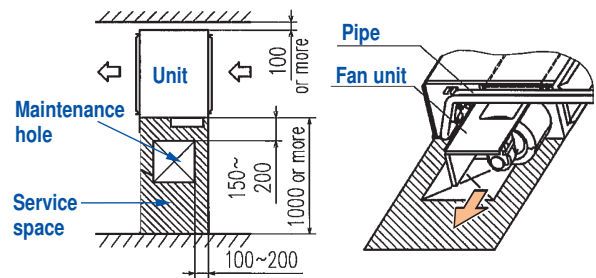
Setting No.	No.8	No.9	No.10	No.11	No.12	No.13	No.14	No.15
E.S.P.	80Pa	90Pa	100Pa	110Pa	120Pa	130Pa	140Pa	150Pa

\* Range of 80~150 Pa is set at ex-factory default.  
 Range of 10~200 Pa is available by setting SW8-4 switch on at site.

<Expansion of external static pressure range>  
 Previous 10~130Pa → Current 10~200Pa

## Point 3 Improvement of the serviceability

Fan unit (impeller and motor) can be pulled out from the right side of the unit. Maintenance can be available from the right side or the bottom side.

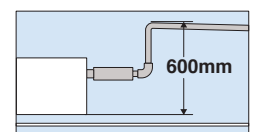


## Point 4 Transparent inspection window

Dirt condition of the bottom of a drain pan can be checked through this transparent inspection window without removing drain pan. (Please refer to P37)

## Point 5 Enhanced installation workability

600mm Drain Pump is mounted in all models. The indoor unit is completely hidden in the ceiling, so this is suitable for spaces with classy interior decoration.

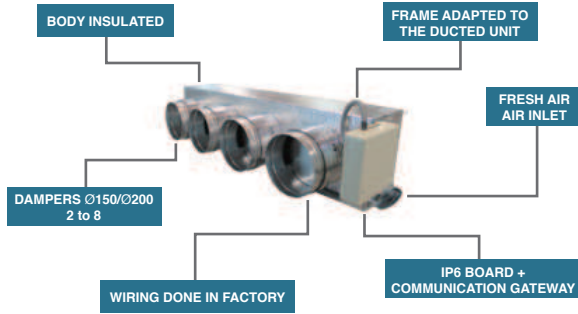


## Round duct adapter

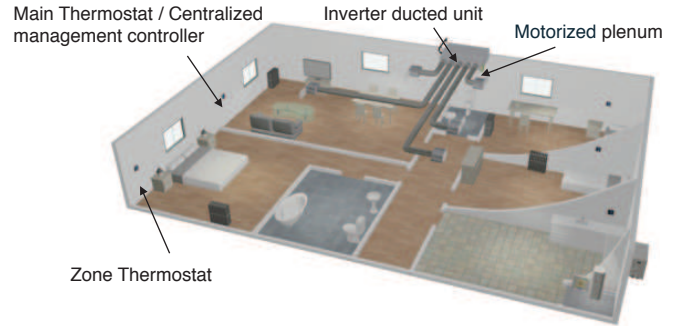
Company : AIRZONE  
URL : <http://www.airzone.es>









All-in-one solution: the whole zoning system in a plug&play device perfectly adapted to the indoor DX unit






## Main components



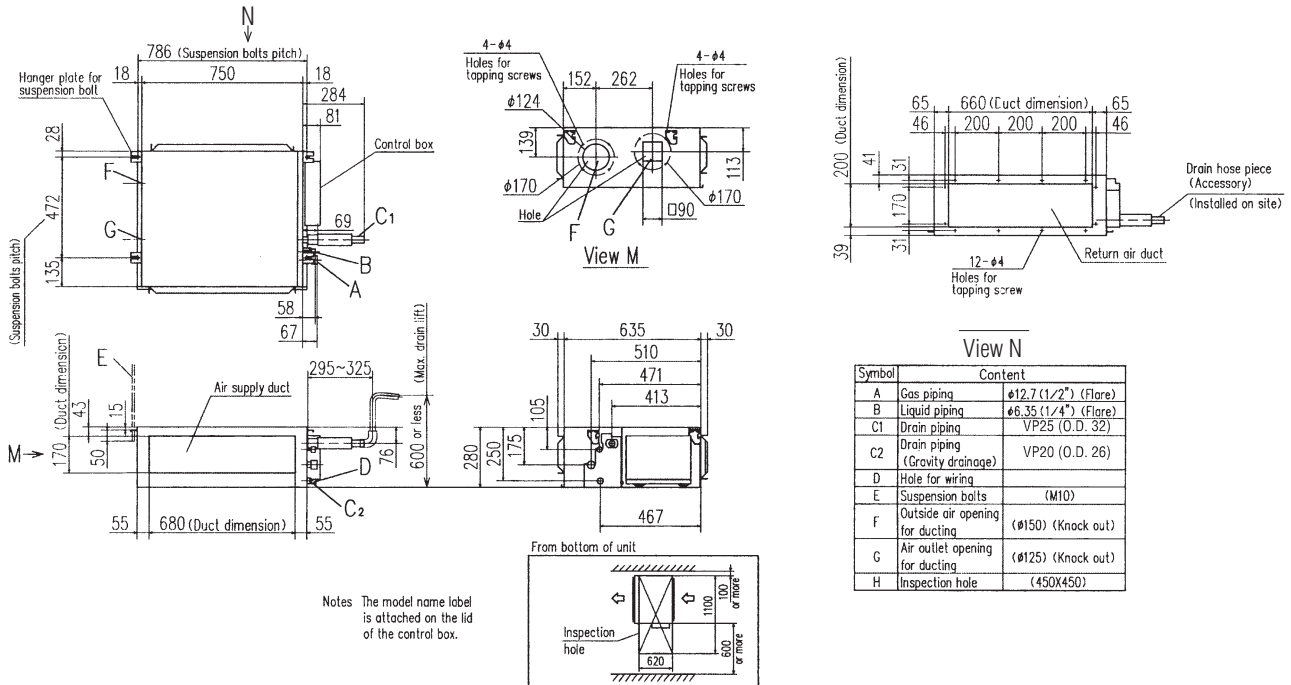
## OUTDOOR UNIT

SRC • FDC	Hyper Inverter			Micro Inverter		
	40~60ZSX	71VNX	100~140VN(S)X	100~140VN(S)	200VSA	250VSA
model						
Chargeless	15m	30m		30m		
Height x Width x Depth (mm)	640 x 800(+71) x 290	750 x 880(+88) x 340	1,300 x 970 x 370	845 x 970 x 370	1,300 x 970 x 370	1,505 x 970 x 370

FDC	Standard Inverter		
	71VNP	90VNP	100VNP
model			
Chargeless	15m		
Height x Width x Depth (mm)	640 x 800(+71) x 290	750 x 880(+88) x 340	845 x 970 x 370

## DIMENSIONS (Unit:mm)

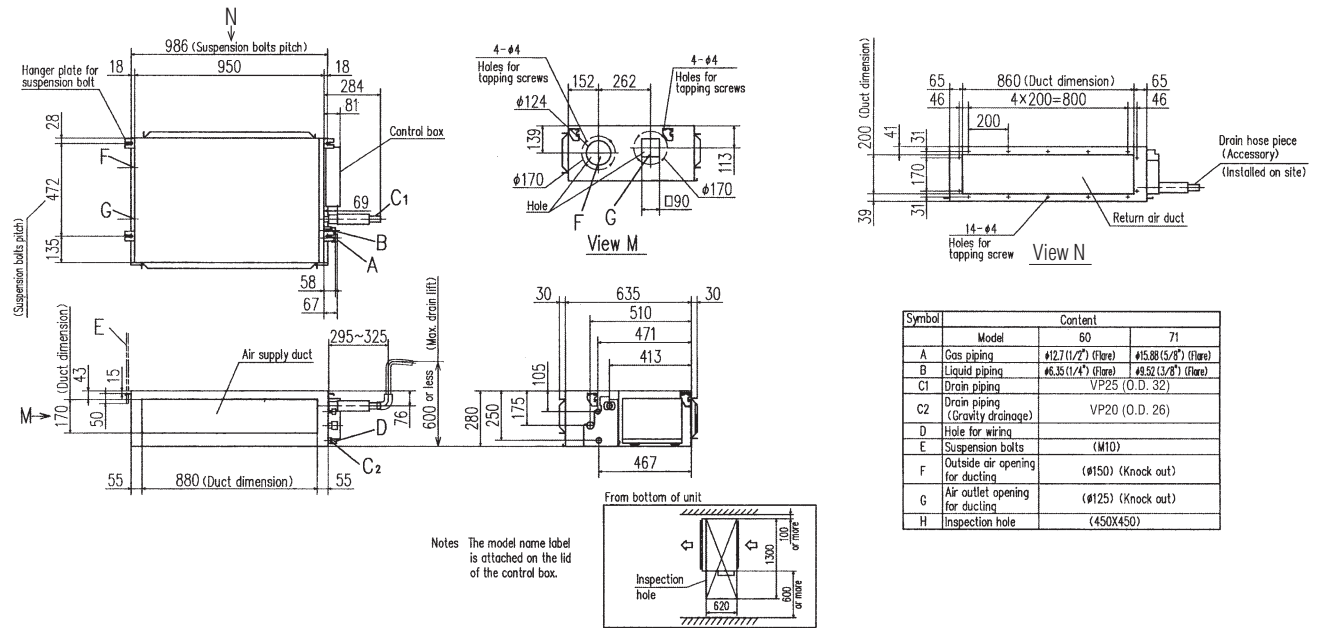
Models FDUM40VF, FDUM50VF



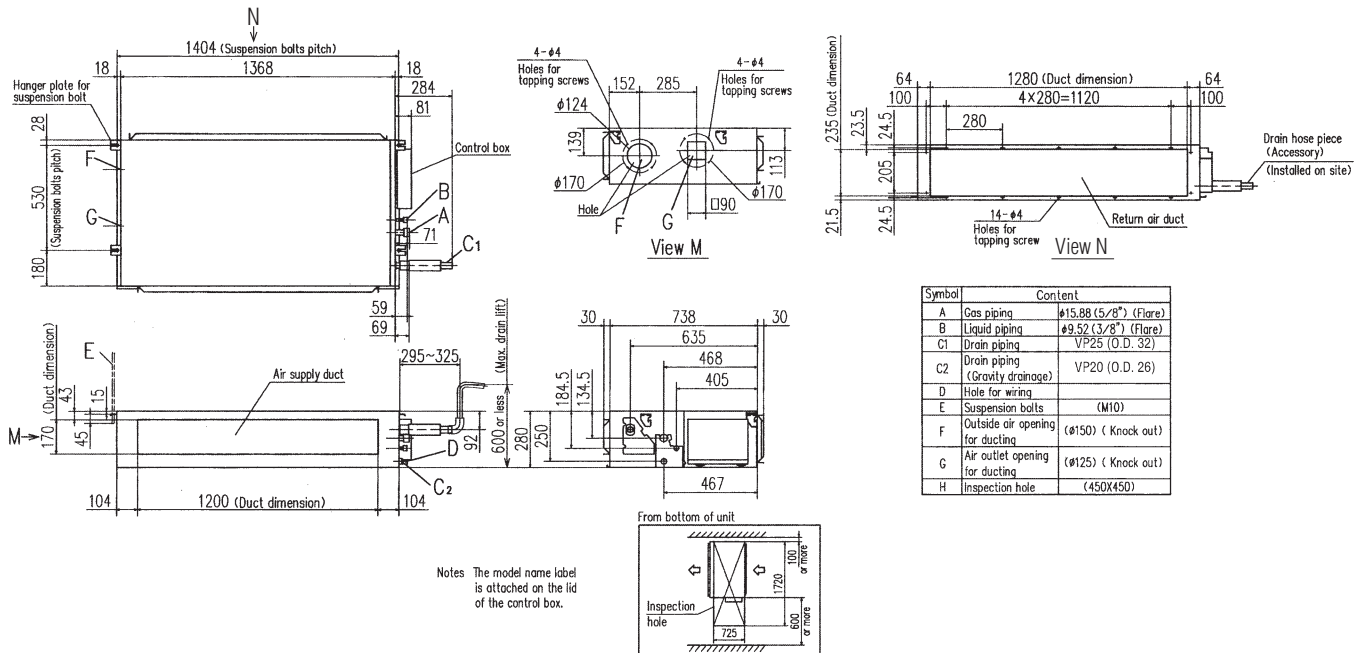
Symbol	Content
A	Gas piping $\phi 12.7 (1/2")$ (Flare)
B	Liquid piping $\phi 6.35 (1/4")$ (Flare)
C1	Drain piping VP25 (O.D. 32)
C2	Drain piping (Gravity drainage) VP20 (O.D. 26)
D	Hole for wiring
E	Suspension bolts (M10)
F	Outside air opening for ducting ( $\phi 150$ ) (Knock out)
G	Air outlet opening for ducting ( $\phi 125$ ) (Knock out)
H	Inspection hole (450X450)

## DIMENSIONS (Unit:mm)

Models FDUM60VF,71VF1



Models FDUM100VF2,125VF,140VF



## SPECIFICATIONS

		Hyper Inverter					
Set model name		FDUM40ZSXVF	FDUM50ZSXVF	FDUM60ZSXVF	FDUM71VNXVF1	FDUM100VNXVF2	
Indoor unit		FDUM40VF	FDUM50VF	FDUM60VF	FDUM71VF1	FDUM100VF2	
Outdoor unit		SRC40ZSX-S	SRC50ZSX-S	SRC60ZSX-S	FDC71VNX	FDC100VNX	
Power source		1 Phase 220-240V, 50Hz / 220V, 60Hz					
Nominal cooling capacity (Min~Max)		kW 4.0 (1.1 ~ 4.7)	5.0 (1.1 ~ 5.6)	5.6 (1.1 ~ 6.3)	7.1 (3.2 ~ 8.0)	10.0 (4.0 ~ 11.2)	
Nominal heating capacity (Min~Max)		kW 4.5 (0.6 ~ 5.4)	5.4 (0.6 ~ 6.3)	6.7 (0.6 ~ 7.1)	8.0 (3.6 ~ 9.0)	11.2 (4.0 ~ 12.5)	
Power consumption		Cooling/Heating kW 0.952 / 1.07	1.38 / 1.45	1.54 / 1.75	2.03 / 1.99	2.68 / 3.02	
EER/COP		Cooling/Heating 4.20 / 4.21	3.62 / 3.72	3.64 / 3.83	3.50 / 4.02	3.73 / 3.71	
Inrush current		A 5	5	5	5	5	
Max. current		12	15	15	17	24	
Sound power level*1	Indoor	Cooling/Heating	60 / 60	60 / 60	60 / 60	65 / 65	
	Outdoor	Cooling/Heating	63 / 63	63 / 63	65 / 64	66 / 66	
Sound pressure level*1 ※1	Indoor	Cooling (Hi/Me/Lo)	32 / 29 / 26	32 / 29 / 26	31 / 28 / 25	33 / 29 / 25	
		Heating (Hi/Me/Lo)	32 / 29 / 26	32 / 29 / 26	31 / 28 / 25	33 / 29 / 25	
	Outdoor	Cooling/Heating	50 / 49	50 / 49	52 / 52	51 / 48	
		Cooling/Heating	10 / 9 / 8	10 / 9 / 8	15 / 13 / 10	19 / 15 / 10	
Air flow ※1	Indoor	Cooling (Hi/Me/Lo)	10 / 9 / 8	10 / 9 / 8	15 / 13 / 10	19 / 15 / 10	
		Heating (Hi/Me/Lo)	10 / 9 / 8	10 / 9 / 8	15 / 13 / 10	19 / 15 / 10	
Outdoor	Cooling/Heating	36 / 33	40 / 33	41.5 / 39	60 / 50	100 / 100	
	Cooling/Heating	Standard:35 Max:100				Standard:60 Max:100	
External static pressure*3		Pa	Standard:35 Max:100			Standard:60 Max:100	
Exterior dimensions	Indoor	HeightxWidthxDepth	280 x 750 x 635		280 x 950 x 635		
	Outdoor	HeightxWidthxDepth	640 x 800(+71) x 290		750 x 880(+88) x 340		
Net weight	Indoor	kg	29		34		
	Outdoor	kg	45		60		
Ref.piping size	Liquid/Gas	ømm	6.35(1/4") / 12.7(1/2")		9.52(3/8") / 15.88(5/8")		
Refrigerant line (one way) length		m	Max.30		Max.50		
Vertical height differences	Outdoor is higher/lower	m	Max.20 / Max.20		Max.30 / Max.15		
Outdoor operating temperature range	Cooling	°C	-15~46*4		-15~43*4		
	Heating	°C	-20~24		-20~20		
Air filter			Filter kit : UM-FL1EF / UM-FL2EF / UM-FL3EF (option)				
Remote control (option)			wired:RC-EX3, RC-E5, RCH-E3 wireless:RCN-KIT4-E2				

		Hyper Inverter					
Set model name		FDUM125VNXVF	FDUM140VNXVF	FDUM100VSVXF2	FDUM125VSVXF	FDUM140VSVXF	
Indoor unit		FDUM125VF	FDUM140VF	FDUM100VF2	FDUM125VF	FDUM140VF	
Outdoor unit		FDC125VNX	FDC140VNX	FDC100VSX	FDC125VSX	FDC140VSX	
Power source		1 Phase 220-240V, 50Hz / 220V, 60Hz			3 Phase 380-415V, 50Hz / 380V, 60Hz		
Nominal cooling capacity (Min~Max)		kW 12.5 (5.0 ~ 14.0)	14.0 (5.0 ~ 16.0)	10.0 (4.0 ~ 11.2)	12.5 (5.0 ~ 14.0)	14.0 (5.0 ~ 16.0)	
Nominal heating capacity (Min~Max)		kW 14.0 (4.0 ~ 17.0)	16.0 (4.0 ~ 18.0)	11.2 (4.0 ~ 16.0)	14.0 (4.0 ~ 18.0)	16.0 (4.0 ~ 20.0)	
Power consumption		Cooling/Heating kW 3.49 / 3.77	4.28 / 4.42	2.68 / 3.02	3.49 / 3.77	4.28 / 4.42	
EER/COP		Cooling/Heating 3.58 / 3.71	3.27 / 3.62	3.73 / 3.71	3.58 / 3.71	3.27 / 3.62	
Inrush current		A 5	5	5	5	5	
Max. current		26	26	15	15	15	
Sound power level*1	Indoor	Cooling/Heating	67 / 67	70 / 70	65 / 65	67 / 67	
	Outdoor	Cooling/Heating	70 / 70	72 / 72	70 / 70	72 / 72	
Sound pressure level*1 ※1	Indoor	Cooling (Hi/Me/Lo)	40 / 34 / 29	40 / 35 / 30	38 / 36 / 30	40 / 34 / 29	
		Heating (Hi/Me/Lo)	40 / 34 / 29	40 / 35 / 30	38 / 36 / 30	40 / 34 / 29	
	Outdoor	Cooling/Heating	48 / 50	49 / 52	48 / 50	48 / 50	
		Cooling/Heating	32 / 26 / 20	35 / 28 / 22	28 / 25 / 19	32 / 26 / 20	
Air flow ※1	Indoor	Cooling (Hi/Me/Lo)	32 / 26 / 20	35 / 28 / 22	28 / 25 / 19	32 / 26 / 20	
		Heating (Hi/Me/Lo)	32 / 26 / 20	35 / 28 / 22	28 / 25 / 19	32 / 26 / 20	
Outdoor	Cooling/Heating	100 / 100	100 / 100	100 / 100	100 / 100	100 / 100	
	Cooling/Heating	Standard:60 Max:100				Standard:60 Max:100	
External static pressure*3		Pa	Standard:60 Max:100			Standard:60 Max:100	
Exterior dimensions	Indoor	HeightxWidthxDepth	280 x 1,370 x 740			280 x 1,370 x 740	
	Outdoor	HeightxWidthxDepth	1,300 x 970 x 370			1,300 x 970 x 370	
Net weight	Indoor	kg	54			54	
	Outdoor	kg	105			105	
Ref.piping size	Liquid/Gas	ømm	9.52(3/8") / 15.88(5/8")			9.52(3/8") / 15.88(5/8")	
Refrigerant line (one way) length		m	Max.100			Max.100	
Vertical height differences	Outdoor is higher/lower	m	Max.30 / Max.15			Max.30 / Max.15	
Outdoor operating temperature range	Cooling	°C	-15~43*4			-15~43*4	
	Heating	°C	-20~20			-20~20	
Air filter			Filter kit : UM-FL3EF (option)				
Remote control (option)			wired:RC-EX3, RC-E5, RCH-E3 wireless:RCN-KIT4-E2				

※1 Powerful-Hi can be selected.

Sound pressure level: 40/50ZSXVF 37dB(A), 60ZSXVF 36dB(A), 71VNXVF1 38dB(A), 100VN(S)VXF2 44dB(A), 125VN(S)VXF 45dB(A), 140VN(S)VXF 47dB(A)

Air flow: 40/50ZSXVF 13m<sup>3</sup>/min, 60ZSXVF 20m<sup>3</sup>/min, 71VNXVF1 24m<sup>3</sup>/min, 100VN(S)VXF2 36m<sup>3</sup>/min, 125VN(S)VXF 39m<sup>3</sup>/min, 140VN(S)VXF 48m<sup>3</sup>/min

### NOTES:

The data are measured under the following conditions(ISO-T1).

Cooling:Indoor temp. of 27°CDB, 19°CWB, and outdoor temp. of 35°CDB. Heating:Indoor temp. of 20°CDB, and outdoor temp. of 7°CDB, 6°CWB.

\*1 : Indicates the value in an anechoic chamber. During operation these values are somewhat higher due to ambient conditions.

\*2 : The values are for one indoor unit operation.

\*3 : External static pressure is changeable to be set by the remote control. MAX external static pressure is "High static pressure" setting. The values of sound pressure level become 5dB(A) higher at external static pressure of 100Pa.

\*4 : If a cooling operation is conducted when the outdoor air temperature is -5°C or lower, the outdoor unit should be installed at a place where it is not influenced by natural wind. If wind blows, the low pressure will drop and compressor frequency will increase, this will cause the capacity to drop and may cause the unit to break down.

## SPECIFICATIONS

The values are for simultaneous Multi operation.

Set model name		Hyper Inverter				
		FDUM71VNXPVF	FDUM100VNXPVF	FDUM125VNXPVF	FDUM140VNXPVF1	FDUM140VNXTVF
		Twin			Triple	
Indoor unit		FDUM40VF	FDUM50VF	FDUM60VF	FDUM71VF1	FDUM50VF
Outdoor unit		FDC71VNX	FDC100VNX	FDC125VNX	FDC140VNX	FDC140VNX
Power source		1 Phase 220-240V, 50Hz / 220V, 60Hz				
Nominal cooling capacity (Min~Max)	kW	7.1 ( 3.2 ~ 8.0 )	10.0 ( 4.0 ~ 11.2 )	12.5 ( 5.0 ~ 14.0 )	14.0 ( 5.0 ~ 16.0 )	14.0 ( 5.0 ~ 16.0 )
Nominal heating capacity (Min~Max)	kW	8.0 ( 3.6 ~ 9.0 )	11.2 ( 4.0 ~ 12.5 )	14.0 ( 4.0 ~ 17.0 )	16.0 ( 4.0 ~ 18.0 )	16.0 ( 4.0 ~ 18.0 )
Power consumption	Cooling/Heating	2.01 / 1.91	2.66 / 3.02	3.26 / 3.66	4.36 / 4.35	4.21 / 4.69
EER/COP	Cooling/Heating	3.53 / 4.19	3.76 / 3.71	3.83 / 3.83	3.21 / 3.68	3.33 / 3.41
Inrush current	A	5	5	5	5	5
Max. current		17	24	26	26	26
Sound power level*1	Indoor*2	Cooling/Heating	60 / 60	60 / 60	60 / 60	65 / 65
	Outdoor	Cooling/Heating	66 / 66	70 / 70	70 / 70	72 / 72
Sound pressure level*1 ※2	Indoor*2	Cooling (Hi/Me/Lo)	39 / 29 / 26	32 / 29 / 26	31 / 28 / 25	33 / 29 / 25
	Outdoor	Cooling/Heating	39 / 29 / 26	32 / 29 / 26	31 / 28 / 25	33 / 29 / 25
Air flow ※2	Indoor*2	Cooling (Hi/Me/Lo)	10 / 9 / 8	10 / 9 / 8	15 / 13 / 10	19 / 15 / 10
	Outdoor	Cooling/Heating	10 / 9 / 8	10 / 9 / 8	15 / 13 / 10	19 / 15 / 10
External static pressure*3	Pa	Standard:35 Max:100				
Exterior dimensions	Indoor	280 x 750 x 635			280 x 950 x 635	
	Outdoor	750 x 880(+88) x 340			1,300 x 970 x 370	
Net weight	Indoor	29			34	
	Outdoor	60			105	
Ref.piping size	Liquid/Gas	ømm 9.52(3/8") / 15.88(5/8")				
Refrigerant line (one way) length	m	Max.50			Max.100	
Vertical height differences	Outdoor is higher/lower	m Max.30 / Max.15				
Outdoor operating temperature range	Cooling	°C -15~43*4				
	Heating	°C -20~20				
Air filter		Filter kit : UM-FL1EF / UM-FL2EF (option)				
Remote control (option)		wired:RC-EX3, RC-E5, RCH-E3 wireless:RCN-KIT4-E2				

The values are for simultaneous Multi operation.

Set model name		Hyper Inverter			
		FDUM100VSXPVF	FDUM125VSXPVF	FDUM140VSXPVF1	FDUM140VSXTVF
		Twin		Triple	
Indoor unit		FDUM50VF	FDUM60VF	FDUM71VF1	FDUM50VF
Outdoor unit		FDC100VSX	FDC125VSX	FDC140VSX	FDC140VSX
Power source		3 Phase 380-415V, 50Hz / 380V, 60Hz			
Nominal cooling capacity (Min~Max)	kW	10.0 ( 4.0 ~ 11.2 )	12.5 ( 5.0 ~ 14.0 )	14.0 ( 5.0 ~ 16.0 )	14.0 ( 5.0 ~ 16.0 )
Nominal heating capacity (Min~Max)	kW	11.2 ( 4.0 ~ 16.0 )	14.0 ( 4.0 ~ 18.0 )	16.0 ( 4.0 ~ 20.0 )	16.0 ( 4.0 ~ 20.0 )
Power consumption	Cooling/Heating	2.66 / 3.02	3.26 / 3.66	4.36 / 4.35	4.21 / 4.69
EER/COP	Cooling/Heating	3.76 / 3.71	3.83 / 3.83	3.21 / 3.68	3.33 / 3.41
Inrush current	A	5	5	5	5
Max. current		15	15	15	15
Sound power level*1	Indoor*2	Cooling/Heating	60 / 60	60 / 60	65 / 65
	Outdoor	Cooling/Heating	70 / 70	70 / 70	72 / 72
Sound pressure level*1 ※2	Indoor*2	Cooling (Hi/Me/Lo)	32 / 29 / 26	31 / 28 / 25	33 / 29 / 25
	Outdoor	Cooling/Heating	32 / 29 / 26	31 / 28 / 25	33 / 29 / 25
Air flow ※2	Indoor*2	Cooling (Hi/Me/Lo)	10 / 9 / 8	15 / 13 / 10	19 / 15 / 10
	Outdoor	Cooling/Heating	10 / 9 / 8	15 / 13 / 10	19 / 15 / 10
External static pressure*3	Pa	Standard:35 Max:100			
Exterior dimensions	Indoor	280 x 750 x 635		280 x 950 x 635	
	Outdoor			1,300 x 970 x 370	
Net weight	Indoor	29		34	
	Outdoor	60		105	
Ref.piping size	Liquid/Gas	ømm 9.52(3/8") / 15.88(5/8")			
Refrigerant line (one way) length	m	Max.100			
Vertical height differences	Outdoor is higher/lower	m Max.30 / Max.15			
Outdoor operating temperature range	Cooling	°C -15~43*4			
	Heating	°C -20~20			
Air filter		Filter kit : UM-FL1EF / UM-FL2EF (option)			
Remote control (option)		wired:RC-EX3, RC-E5, RCH-E3 wireless:RCN-KIT4-E2			

※2 Powerful-Hi can be selected.

Sound pressure level: 71VNXPVF/100VN(S)XPVF 37dB(A), 125VN(S)XPVF 36dB(A), 140VN(S)XPVF1 38dB(A), 140VN(S)XTVF 37dB(A)  
Air flow: 71VNXPVF/100VN(S)XPVF 13m<sup>3</sup>/min, 125VN(S)XPVF 20m<sup>3</sup>/min, 140VN(S)XPVF1 24m<sup>3</sup>/min, 140VN(S)XTVF 13m<sup>3</sup>/min

## SPECIFICATIONS

		Micro Inverter					
Set model name		FDUM100VNVF2	FDUM125VNVF	FDUM140VNVF	FDUM100VSVF2	FDUM125VSVF	FDUM140VSVF
Indoor unit		FDUM100VF2	FDUM125VF	FDUM140VF	FDUM100VF2	FDUM125VF	FDUM140VF
Outdoor unit		FDC100VN	FDC125VN	FDC140VN	FDC100VS	FDC125VS	FDC140VS
Power source		1 Phase 220-240V, 50Hz / 220V, 60Hz			3 Phase 380-415V, 50Hz / 380V, 60Hz		
Nominal cooling capacity (Min~Max)		kW 10.0 (4.0 ~ 11.2)	12.5 (5.0 ~ 14.0)	14.0 (5.0 ~ 14.5)	10.0 (4.0 ~ 11.2)	12.5 (5.0 ~ 14.0)	14.0 (5.0 ~ 14.5)
Nominal heating capacity (Min~Max)		kW 11.2 (4.0 ~ 12.5)	14.0 (4.0 ~ 16.0)	16.0 (4.0 ~ 16.5)	11.2 (4.0 ~ 12.5)	14.0 (4.0 ~ 16.0)	16.0 (4.0 ~ 16.5)
Power consumption	Cooling/Heating	kW 2.80 / 3.02	3.90 / 3.88	4.95 / 4.69	2.80 / 3.02	3.90 / 3.88	4.95 / 4.69
EER/COP	Cooling/Heating	3.57 / 3.71	3.21 / 3.61	2.83 / 3.41	3.57 / 3.71	3.21 / 3.61	2.83 / 3.41
Inrush current		A 5	5	5	5	5	5
Max. current		24	24	24	15	15	15
Sound power level*1	Indoor	Cooling/Heating	65 / 65	67 / 67	70 / 70	65 / 65	67 / 67
	Outdoor	Cooling/Heating	70 / 70	72 / 72	73 / 73	70 / 70	72 / 72
Sound pressure level*1 ※1	Indoor	Cooling (Hi/Me/Lo)	38 / 36 / 30	40 / 34 / 29	40 / 35 / 30	38 / 36 / 30	40 / 34 / 29
		Heating (Hi/Me/Lo)	38 / 36 / 30	40 / 34 / 29	40 / 35 / 30	38 / 36 / 30	40 / 34 / 29
	Outdoor	Cooling/Heating	49 / 49	50 / 51	51 / 51	49 / 49	50 / 51
		Cooling (Hi/Me/Lo)	28 / 25 / 19	32 / 26 / 20	35 / 28 / 22	28 / 25 / 19	32 / 26 / 20
Air flow ※1	Indoor	Heating (Hi/Me/Lo)	28 / 25 / 19	32 / 26 / 20	35 / 28 / 22	28 / 25 / 19	32 / 26 / 20
		Cooling/Heating	75 / 73	75 / 73	75 / 73	75 / 73	75 / 73
External static pressure*3		Pa	Standard:60 Max:100				
Exterior dimensions	Indoor	HeightxWidthxDepth	280 x 1,370 x 740				
	Outdoor		845 x 970 x 370				
Net weight	Indoor		54				
	Outdoor		81				83
Ref.piping size	Liquid/Gas	ømm	9.52(3/8") / 15.88(5/8")				
Refrigerant line (one way) length		m	Max.50				
Vertical height differences	Outdoor is higher/lower	m	Max.30 / Max.15				
Outdoor operating temperature range	Cooling	°C	-15~43*4				
	Heating		-20~20				
Air filter			Filter kit : UM-FL3EF (option)				
Remote control (option)			wired:RC-EX3, RC-E5, RCH-E3 wireless:RCN-KIT4-E2				

The values are for simultaneous Multi operation.

		Micro Inverter				
Set model name		FDUM100VNPVF	FDUM125VNPVF	FDUM140VNPVF1	FDUM140VNTVF	FDUM100VSPVF
		Twin			Triple	Twin
Indoor unit		FDUM50VF	FDUM60VF	FDUM71VF1	FDUM50VF	FDUM50VF
Outdoor unit		FDC100VN	FDC125VN	FDC140VN	FDC140VN	FDC100VS
Power source		1 Phase 220-240V, 50Hz / 220V, 60Hz				3 Phase 380-415V, 50Hz / 380V, 60Hz
Nominal cooling capacity (Min~Max)		kW 10.0 (4.0 ~ 11.2)	12.5 (5.0 ~ 14.0)	14.0 (5.0 ~ 14.5)	14.0 (5.0 ~ 14.5)	10.0 (4.0 ~ 11.2)
Nominal heating capacity (Min~Max)		kW 11.2 (4.0 ~ 12.5)	14.0 (4.0 ~ 16.0)	16.0 (4.0 ~ 16.5)	16.0 (4.0 ~ 16.5)	11.2 (4.0 ~ 12.5)
Power consumption	Cooling/Heating	kW 2.84 / 3.35	3.87 / 4.07	4.78 / 4.60	4.65 / 5.15	2.84 / 3.35
EER/COP	Cooling/Heating	3.52 / 3.34	3.23 / 3.44	2.93 / 3.48	3.01 / 3.11	3.52 / 3.34
Inrush current		A 5	5	5	5	5
Max. current		24	24	24	15	15
Sound power level*1	Indoor*2	Cooling/Heating	60 / 60	60 / 60	65 / 65	60 / 60
	Outdoor	Cooling/Heating	70 / 70	72 / 72	73 / 73	70 / 70
Sound pressure level*1 ※1	Indoor*2	Cooling (Hi/Me/Lo)	32 / 29 / 26	31 / 28 / 25	33 / 29 / 25	32 / 29 / 26
		Heating (Hi/Me/Lo)	32 / 29 / 26	31 / 28 / 25	33 / 29 / 25	32 / 29 / 26
	Outdoor	Cooling/Heating	49 / 49	50 / 51	51 / 51	49 / 49
		Cooling (Hi/Me/Lo)	10 / 9 / 8	15 / 13 / 10	19 / 15 / 10	10 / 9 / 8
Air flow ※1	Indoor*2	Heating (Hi/Me/Lo)	10 / 9 / 8	15 / 13 / 10	19 / 15 / 10	10 / 9 / 8
		Cooling/Heating	75 / 73	75 / 73	75 / 73	75 / 73
External static pressure*3		Pa	Standard:35 Max:100			
Exterior dimensions	Indoor	HeightxWidthxDepth	280 x 950 x 635			280 x 750 x 635
	Outdoor		845 x 970 x 370			
Net weight	Indoor		29			29
	Outdoor		81			83
Ref.piping size	Liquid/Gas	ømm	9.52(3/8") / 15.88(5/8")			
Refrigerant line (one way) length		m	Max.50			
Vertical height differences	Outdoor is higher/lower	m	Max.30 / Max.15			
Outdoor operating temperature range	Cooling	°C	-15~43*4			
	Heating		-20~20			
Air filter			Filter kit : UM-FL1EF / UM-FL2EF (option)			
Remote control (option)			wired:RC-EX3, RC-E5, RCH-E3 wireless:RCN-KIT4-E2			

※1 Powerful-Hi can be selected.

Sound pressure level: 100VN(S)VF2 44dB(A), 125VN(S)VF 45dB(A), 140VN(S)VF 47dB(A), 100VN(S)PVF 37dB(A), 125VNPVF 36dB(A), 140VNPVF1 38dB(A), 140VNTVF 37dB(A)

Air flow: 100VN(S)VF2 36m<sup>3</sup>/min, 125VN(S)VF 39m<sup>3</sup>/min, 140VN(S)VF 48m<sup>3</sup>/min, 100VN(S)PVF 13m<sup>3</sup>/min, 125VNPVF 20m<sup>3</sup>/min, 140VNPVF1 24m<sup>3</sup>/min, 140VNTVF 13m<sup>3</sup>/min

### NOTES:

The data are measured under the following conditions(ISO-T1).

Cooling:Indoor temp. of 27°CDB, 19°CWB, and outdoor temp. of 35°CDB. Heating:Indoor temp. of 20°CDB, and outdoor temp. of 7°CDB, 6°CWB.

\*1 : Indicates the value in an anechoic chamber. During operation these values are somewhat higher due to ambient conditions.

\*2 : The values are for one indoor unit operation.

\*3 : External static pressure is changeable to be set by the remote control. MAX external static pressure is "High static pressure" setting. The values of sound pressure level become 5dB(A) higher at external static pressure of 100Pa.

\*4 : If a cooling operation is conducted when the outdoor air temperature is -5°C or lower, the outdoor unit should be installed at a place where it is not influenced by natural wind. If wind blows, the low pressure will drop and compressor frequency will increase, this will cause the capacity to drop and may cause the unit to break down.

## SPECIFICATIONS

The values are for simultaneous Multi operation.

Set model name		Micro Inverter								
		FDUM125VSPVF	FDUM140VSPVF1	FDUM200VSAPVF2	FDUM250VSAPVF	FDUM140VSTVF	FDUM200VSATVF1			
Indoor unit		FDUM60VF	FDUM71VF1	FDUM100VF2	FDUM125VF	FDUM50VF	FDUM71VF1			
Outdoor unit		FDC125VS	FDC140VS	FDC200VSA	FDC250VSA	FDC140VS	FDC200VSA			
Power source		3 Phase 380-415V, 50Hz / 380V, 60Hz								
Nominal cooling capacity (Min~Max)		kW	12.5 ( 5.0 ~ 14.0 )	14.0 ( 5.0 ~ 14.5 )	19.0 ( 5.2 ~ 22.4 )	24.0 ( 6.9 ~ 28.0 )	14.0 ( 5.0 ~ 14.5 )	19.0 ( 5.2 ~ 22.4 )		
Nominal heating capacity (Min~Max)		kW	14.0 ( 4.0 ~ 16.0 )	16.0 ( 4.0 ~ 16.5 )	22.4 ( 3.3 ~ 25.0 )	27.0 ( 5.5 ~ 31.5 )	16.0 ( 4.0 ~ 16.5 )	22.4 ( 3.3 ~ 25.0 )		
Power consumption		Cooling/Heating	kW	3.87 / 4.07	4.78 / 4.60	6.51 / 6.04	8.33 / 7.52	4.65 / 5.15	6.46 / 6.15	
EER/COP		Cooling/Heating		3.23 / 3.44	2.93 / 3.48	2.92 / 3.71	2.88 / 3.59	3.01 / 3.11	2.94 / 3.64	
Inrush current		A		5	5	5	5	5	5	
Max. current				15	15	22	24	15	22	
Sound power level*1	Indoor <sup>※2</sup>	Cooling/Heating		60 / 60	65 / 65	65 / 65	67 / 67	60 / 60	65 / 65	
	Outdoor	Cooling/Heating		72 / 72	73 / 73	72 / 74	73 / 75	73 / 73	72 / 74	
Sound pressure level*1 ※2	Indoor <sup>※2</sup>	Cooling (Hi/Me/Lo)	dB(A)	31 / 28 / 25	33 / 29 / 25	38 / 36 / 30	40 / 34 / 29	32 / 29 / 26	33 / 29 / 25	
		Heating (Hi/Me/Lo)		31 / 28 / 25	33 / 29 / 25	38 / 36 / 30	40 / 34 / 29	32 / 29 / 26	33 / 29 / 25	
Air flow ※2	Indoor <sup>※2</sup>	Cooling (Hi/Me/Lo)	m <sup>3</sup> /min	15 / 13 / 10	19 / 15 / 10	28 / 25 / 19	32 / 26 / 20	10 / 9 / 8	19 / 15 / 10	
		Heating (Hi/Me/Lo)		15 / 13 / 10	19 / 15 / 10	28 / 25 / 19	32 / 26 / 20	10 / 9 / 8	19 / 15 / 10	
	Outdoor	Cooling/Heating		75 / 73	75 / 73	135 / 135	143 / 151	75 / 73	135 / 135	
External static pressure*3		Pa	Standard:35 Max:100		Standard:60 Max:100		Standard:35 Max:100	Standard:35 Max:100		
Exterior dimensions	Indoor	HeightxWidthxDepth	mm	280 x 950 x 635		280 x 1,370 x 740		280 x 750 x 635	280 x 950 x 635	
	Outdoor			845 x 970 x 370		1,300 x 970 x 370	1,505 x 970 x 370	845 x 970 x 370	1,300 x 970 x 370	
Net weight	Indoor		kg	34		54		29	34	
	Outdoor			83		115	143	83	115	
Ref.piping size		Liquid/Gas	ømm	9.52(3/8") / 15.88(5/8")		9.52(3/8") / 22.22(7/8")		12.7(1/2") / 22.22(7/8")	9.52(3/8") / 15.88(5/8")	9.52(3/8") / 22.22(7/8")
Refrigerant line (one way) length			m	Max.50		Max.70		Max.50	Max.70	
Vertical height differences		Outdoor is higher/lower	m	Max.30 / Max.15						
Outdoor operating temperature range	Cooling	°C		-15~43*4		-15~50*4		-15~43*4	-15~50*4	
	Heating		-20~20		-15~20		-20~20	-15~20		
Air filter		Filter kit : UM-FL1EF / UM-FL2EF / UM-FL3EF (option)								
Remote control (option)		wired:RC-EX3, RC-E5, RCH-E3 wireless:RCN-KIT4-E2								

Set model name		Standard Inverter					
		FDUM71VNPVF1	FDUM90VNPVF2	FDUM100VNP1VF2			
Indoor unit		FDUM71VF1	FDUM100VF2	FDUM100VF2			
Outdoor unit		FDC71VNP	FDC90VNP	FDC100VNP			
Power source		1 Phase 220-240V, 50Hz / 220V, 60Hz					
Nominal cooling capacity (Min~Max)		kW	7.1 ( 1.4 ~ 7.1 )	9.0 ( 1.9 ~ 9.0 )	10.0 ( 2.8 ~ 11.2 )		
Nominal heating capacity (Min~Max)		kW	7.1 ( 1.0 ~ 7.1 )	9.0 ( 1.5 ~ 9.0 )	11.2 ( 2.5 ~ 12.5 )		
Power consumption		Cooling/Heating	kW	2.63 / 1.96	2.65 / 2.25	3.00 / 2.93	
EER/COP		Cooling/Heating		2.70 / 3.62	3.40 / 4.00	3.33 / 3.82	
Inrush current		A		5	5	5	
Max. current				14.5	18.0	22.0	
Sound power level*1	Indoor	Cooling/Heating		65 / 65	65 / 65	65 / 65	
	Outdoor	Cooling/Heating		67 / 67	69 / 69	70 / 70	
Sound pressure level*1 ※2	Indoor	Cooling (Hi/Me/Lo)	dB(A)	33 / 29 / 25	38 / 36 / 30	38 / 36 / 30	
		Heating (Hi/Me/Lo)		33 / 29 / 25	38 / 36 / 30	38 / 36 / 30	
Air flow ※2	Indoor	Cooling (Hi/Me/Lo)	m <sup>3</sup> /min	19 / 15 / 10	28 / 25 / 19	28 / 25 / 19	
		Heating (Hi/Me/Lo)		19 / 15 / 10	28 / 25 / 19	28 / 25 / 19	
	Outdoor	Cooling/Heating		36 / 36	63 / 49.5	75 / 79	
External static pressure*3		Pa	Standard:35 Max:200		Standard:60 Max:100		
Exterior dimensions	Indoor	HeightxWidthxDepth	mm	280 x 950 x 635		280 x 1,370 x 740	
	Outdoor			640 x 800(+71) x 290		750 x 880(+88) x 340	845 x 970 x 370
Net weight	Indoor		kg	34		54	
	Outdoor			45		57	70
Ref.piping size		Liquid/Gas	ømm	6.35(1/4") / 12.7(1/2")		6.35(1/4") / 15.88(5/8")	9.52(3/8") / 15.88(5/8")
Refrigerant line (one way) length			m	Max.30			
Vertical height differences		Outdoor is higher/lower	m	Max.20 / Max.20			
Outdoor operating temperature range	Cooling	°C		-15~46*4			
	Heating		-15~20				
Air filter		Filter kit : UM-FL2EF / UM-FL3EF (option)					
Remote control (option)		wired:RC-EX3, RC-E5, RCH-E3 wireless:RCN-KIT4-E2					

※2 Powerful-Hi can be selected.

Sound pressure level: 125VSPVF 36dB(A), 140VSPVF1 38dB(A), 200VSAPVF2 44dB(A), 250VSAPVF 45dB(A), 140VSTVF 37dB(A), 200VSATVF1 38dB(A), 71VNPVF1 38dB(A), 90VNPVF2 44dB(A), 100VNP1VF2 44dB(A)

Air flow: 125VSPVF 20m<sup>3</sup>/min, 140VSPVF1 24m<sup>3</sup>/min, 200VSAPVF2 36m<sup>3</sup>/min, 250VSAPVF 39m<sup>3</sup>/min, 140VSTVF 13m<sup>3</sup>/min, 200VSATVF1 24m<sup>3</sup>/min, 71VNPVF1 24m<sup>3</sup>/min, 90VNPVF2 36m<sup>3</sup>/min, 100VNP1VF2 36m<sup>3</sup>/min