

Fresh Air Ventilation

Product Information

VL-100(E)U₅-E
Total Heat Exchanger

Making a
World of
Difference



New from
Autumn
2013

Easy to install, efficient single room ventilation

The VL-100(E)U₅-E total heat exchangers are part of Mitsubishi Electric's energy efficient Lossnay range.

With modern homes being built to stricter Building Regulations that call for highly insulated homes, the need for ventilation to remove stale air without major heat loss is key.

The VL-100(E)U₅-E units supply fresh air inside a room using simultaneous supply and extract operation in an energy efficient manner. The recovery of both latent heat and sensible heat ensures a comfortable internal environment as well as reducing heat losses hence saving both energy and costs.

Key Features

- Effective fresh air ventilation
- Improved air quality and comfort
- Efficient heat recovery
- Good sound attenuation
- Simple installation
- Low power consumption
- Up to 79% heat recovery
- Total heat exchange (sensible and latent)



Air Conditioning | Heating
Ventilation | Controls



FEATURES



Auto-Restart



Standard filter

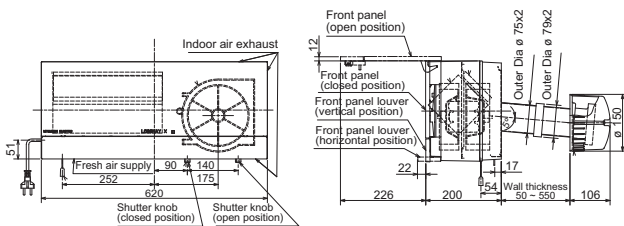
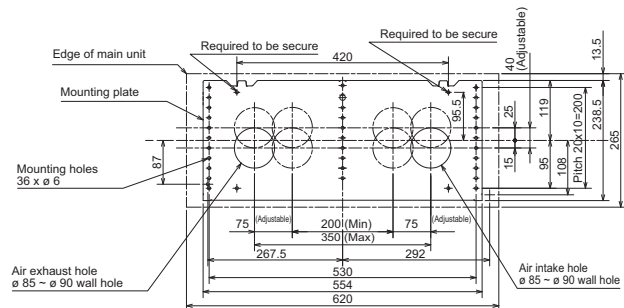


LOSSNAY		RESIDENTIAL WALL - MOUNTED VL-100(E)U ₅ -E	
Electrical Power Supply		220-240V, 50Hz	
Phase		Single	
Power Consumption (W)	Low	17	
	High	34	
Airflow (m ³ /h)	Low	61	
	High	106	
Sound Pressure Level (dBA)	Low	27	
	High	38	
Temperature Exchange Efficiency (%)	Low	79	
	High	72	
Weight (kg)		7.5	
Dimensions (mm)	Width	620	
	Depth	200	
	Height	265	
Duct Size (mm)		2 x 075	
Fuse Rating (BS88) - HRC (A)		6	
Mains Cable No. Cores		3	

*1 The VL-100U₅-E includes a pull cord switch to control the unit.

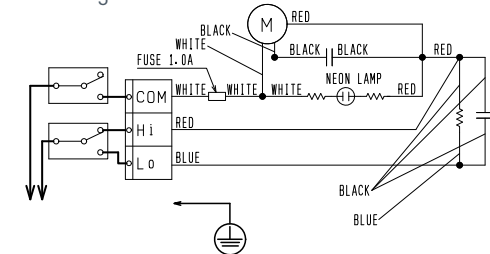
NOTE: The VL-100EU₅-E is available without a pull cord switch and with the option to fit a field supplied external wall switch.

VL-100(E)U₅-E DIMENSIONS

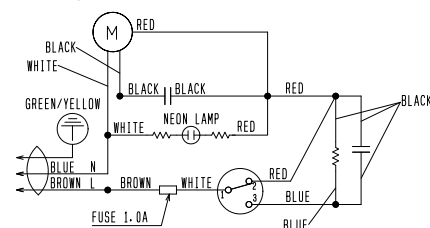


WIRING DIAGRAMS

VL-100U₅-E



VL-100EU₅-E



Telephone: 01707 282880

email: ventilation@meuk.mee.com web: www.airconditioning.mitsubishielectric.co.uk

UNITED KINGDOM Mitsubishi Electric Europe Living Environmental Systems Division
Travellers Lane, Hatfield, Hertfordshire, AL10 8XB, England General Enquiries Telephone: 01707 282880 Fax: 01707 278881

IRELAND Mitsubishi Electric Europe Westgate Business Park, Ballymount, Dublin 24, Ireland
Telephone: Dublin (01) 419 8800 Fax: Dublin (01) 419 8890 International code: (003531)

Country of origin: United Kingdom - Japan - Thailand - Malaysia. ©Mitsubishi Electric Europe 2013. Mitsubishi and Mitsubishi Electric are trademarks of Mitsubishi Electric Europe B.V. The company reserves the right to make any variation in technical specification to the equipment described, or to withdraw or replace products without prior notification or public announcement. Mitsubishi Electric is constantly developing and improving its products. All descriptions, illustrations, drawings and specifications in this publication present only general particulars and shall not form part of any contract. All goods are supplied subject to the Company's General Conditions of Sale, a copy of which is available on request. Third-party product and brand names may be trademarks or registered trademarks of their respective owners.



Effective as of September 2013



www.greengateway.mitsubishielectric.co.uk

Mitsubishi Electric's commitment
to the environment

Follow us @green_gateway

Connect with Green Gateway

mitsubishielectric2