



INVERTER MULTI-SPLIT MODEL

Inverter Multi-split System

The Multi DC Inverter range are innovative Multi-split systems from Mitsubishi Heavy Industries Thermal Systems which offers the perfect answer for air conditioning comfort in several environments.

A single outdoor unit can air condition up to 6 different rooms. Utilising a range of compact and elegant indoor units that are available in 6 different types make air conditioning any indoor environment possible .

The whole range is characterised by high flexibility, high energy efficiency and extremely low noise levels.



Wall Mounted type
SRK/SKM



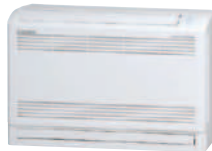
Ceiling Concealed type
SRR



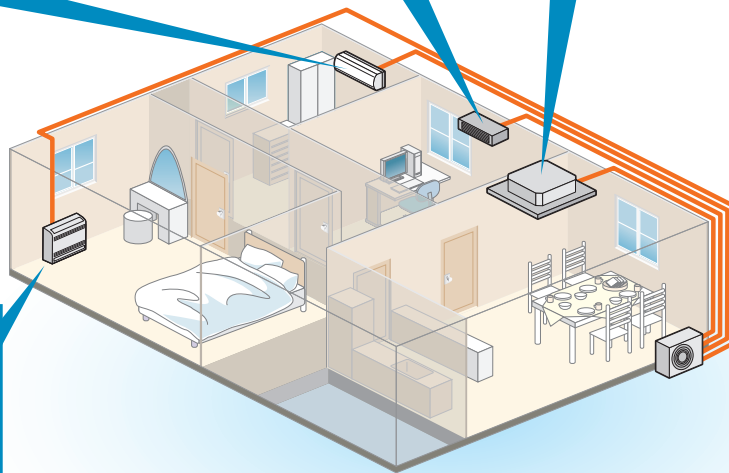
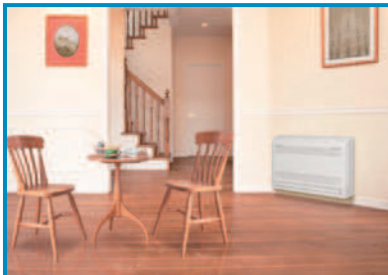
4way Ceiling Cassette type
FDTC



Fits into standard 600x600 ceiling



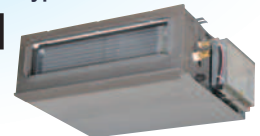
Floor Standing type
SRF



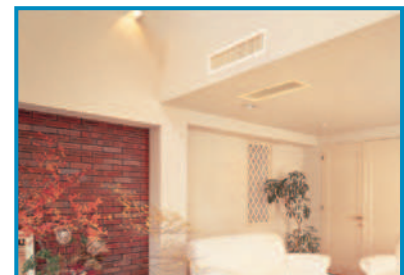
Ceiling Suspended type
FDE



Duct Connected type
FDUM



A wide variety of choices for indoor units



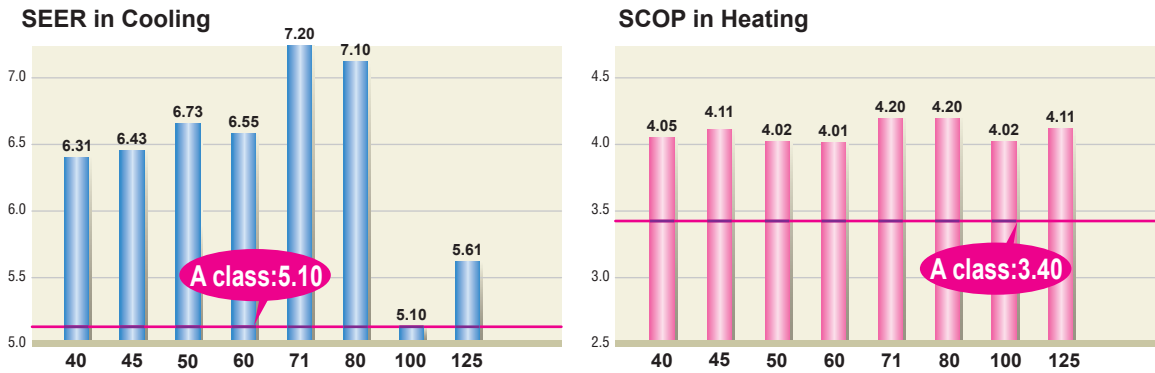
OUTDOOR UNITS

Powerful, efficient and silent outdoor units are available in 8 sizes and able to combine up to 6 indoor units.



Energy saving

All models can achieve very high seasonal efficiency thanks to the application of inverter technology which makes it possible to vary the power output according to demand for cooling or heating. This makes it possible to reach the set temperature quickly and to keep it stable over time saving about 30% in consumption compared to traditional fixed speed air conditioners.



• The above values are based on indoor unit combination with SRK-ZSX-S only.

Comfort

Thanks to the application of the Twin Rotary compressor, the outdoor units have low noise levels. All the units also operate in heating and cooling mode with an outdoor temperature limit of -15°C.

Compact

Compact enough to be installed in areas with a limited amount of space.

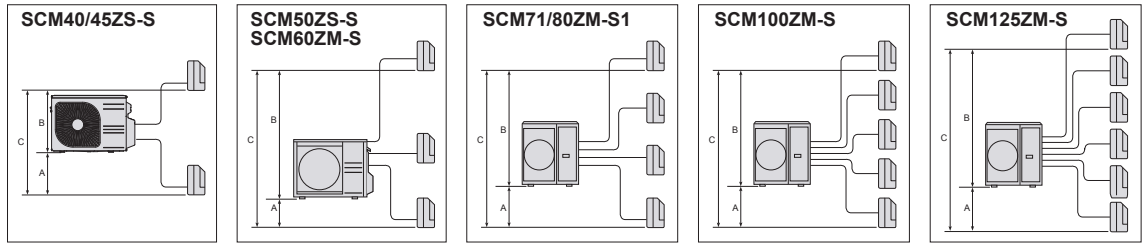


INVERTER MULTI-SPLIT MODEL

Long piping length

The maximum piping length of the refrigerant pipes for the outdoor units, and the maximum height difference for the outdoor units are as shown below.

	SCM40/45ZS-S	SCM50ZS-S/SCM60ZM-S	SCM71/80ZM-S1	SCM100/125ZM-S
length for one indoor unit	under 25m	under 25m	under 25m	under 25m
total length for all rooms	under 30m	under 40m	under 70m	under 90m
height difference	lower installation spot of the indoor unit (A)	under 15m	under 15m	under 20m
	upper installation spot of the indoor unit (B)	under 15m	under 15m	under 20m
	maximum height difference of the indoor units (C)	under 25m	under 25m	under 25m
length of precharged refrigerant pipe	30m	40m	40m	50m

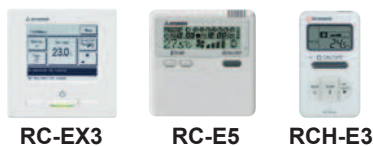


CONNECTABLE UNITS

Indoor units		Outdoor units							
		40ZS-S	45ZS-S	50ZS-S	60ZM-S	71ZM-S1	80ZM-S1	100ZM-S	125ZM-S
	SRK20ZSX	●	●	●	●	●	●	●	●
	SRK25ZSX	●	●	●	●	●	●	●	●
	SRK35ZSX	●	●	●	●	●	●	●	●
	SRK50ZSX	—	—	●	●	●	●	●	●
	SRK60ZSX	—	—	—	●	●	●	●	●
	SRK71ZR	—	—	—	—	—	—	●	●
	SRK20ZS	●	●	●	●	●	●	●	●
	SRK25ZS	●	●	●	●	●	●	●	●
	SRK35ZS	●	●	●	●	●	●	●	●
	SRK50ZS	—	—	●	●	●	●	●	●
	SKM20ZSP	●	●	●	—	—	—	—	—
	SKM25ZSP	●	●	●	—	—	—	—	—
	SKM35ZSP	●	●	●	—	—	—	—	—
	SRF25ZMX	●	●	●	●	●	●	●	●
	SRF35ZMX	●	●	●	●	●	●	●	●
	SRF50ZMX	—	—	●	●	●	●	●	●
	FDTC25VF	●	●	●	●	●	●	●	●
	FDTC35VF	●	●	●	●	●	●	●	●
	FDTC50VF	—	—	●	●	●	●	●	●
	FDTC60VF	—	—	—	●	●	●	●	●
	SRR25ZM	●	●	●	●	●	●	●	●
	SRR35ZM	●	●	●	●	●	●	●	●
	SRR50ZM	—	—	●	●	●	●	●	●
	SRR60ZM	—	—	—	●	●	●	●	●
	FDUM50VF	—	—	●	●	●	●	●	●
	FDE50VG	—	—	●	●	●	●	●	●

OPTION

Wired remote control



Wireless remote control



SPECIFICATIONS

Item	Model	For two rooms		For three rooms		
		SCM40ZS-S	SCM45ZS-S	SCM50ZS-S	SCM60ZM-S	
Power Source		1Phase, 220 - 240V, 50Hz				
Nominal cooling capacity (Min~Max)	kW	4.0(1.5~5.9)	4.5(1.5~6.4)	5.0(1.8~7.1)	6.0(1.8~7.5)	
Nominal heating capacity (Min~Max)	kW	4.5(1.3~6.3)	5.3(1.3~6.5)	6.0(1.4~7.5)	6.8(1.5~7.8)	
Power Consumption	Cooling	kW	0.84(0.59~2.13)	1.04(0.59~2.30)	1.05(0.60~2.15)	1.43(0.50~2.39)
	Heating	kW	0.90(0.54~1.70)	1.15(0.54~1.92)	1.24(0.55~2.58)	1.51(0.60~3.00)
EER	Cooling		4.76	4.33	4.76	4.2
COP	Heating		5.00	4.61	4.84	4.5
Max. running current	A	14	14	14	17	
Sound power level	Cooling	dB(A)	62	62	62	63
	Heating	dB(A)	64	64	64	65
Sound pressure level	Cooling	dB(A)	48	49	49	50
	Heating	dB(A)	50	50	51	52
Air flow	Cooling	m ³ /min	32.5	32.5	41.0	42.0
	Heating	m ³ /min	32.5	32.5	41.0	42.0
Exterior dimensions (H×W×D)	mm	595×780(+90)×290		640×850(+65)×290		
Net weight	kg	42	42	48.5	49	
Refrigerant	Type/GWP	R410A/2088				
	Charge	kg/TCO ₂ Eq	1.9/3.967		2.5/5.22	
Refrigerant piping size	Liquid	Φmm	6.35(1/4")×2		6.35(1/4")×3	
	Gas	Φmm	9.52(3/8")×2		9.52(3/8")×3	
Outdoor operating temperature range	Cooling	°C	-15~43			
	Heating	°C	-15~24			
Number of Connectable indoor units		2	2	Min.2~Max.3	Min.2~Max.3	
Total indoor units capacity	kW	6.0	7.0	8.5	11.0	

Item	Model	For four rooms		For five/six rooms		
		SCM71ZM-S1	SCM80ZM-S1	SCM100ZM-S	SCM125ZM-S	
Power Source		1Phase, 220 - 240V, 50Hz				
Nominal cooling capacity (Min~Max)	kW	7.1(1.8~8.8)	8.0(1.8~9.2)	10.0(1.8~12.0)	12.5(1.8~14.0)	
Nominal heating capacity (Min~Max)	kW	8.6(1.5~9.4)	9.3(1.5~9.8)	12.0(1.5~13.5)	13.5(1.5~14.0)	
Power Consumption	Cooling	kW	1.58(0.48~2.75)	1.95(0.48~2.83)	2.86(0.65~4.03)	3.90(0.65~4.80)
	Heating	kW	2.00(0.60~3.35)	2.26(0.60~3.43)	2.93(0.70~3.40)	3.25(0.70~3.42)
EER	Cooling		4.49	4.10	3.50	3.21
COP	Heating		4.30	4.12	4.10	4.15
Max. running current	A	20	20	29	29	
Sound power level	Cooling	dB(A)	63	66	68	69
	Heating	dB(A)	66	66	71	72
Sound pressure level	Cooling	dB(A)	50	54	56	57
	Heating	dB(A)	54	54	59	60
Air flow	Cooling	m ³ /min	50.0	56.0	75.0	75.0
	Heating	m ³ /min	56.0	56.0	75.0	82.0
Exterior dimensions (H×W×D)	mm	750×880(+73)×340		945×970(+73)×370		
Net weight	kg	62		92		
Refrigerant	Type/GWP	R410A/2088				
	Charge	kg/TCO ₂ Eq	3.15/6.577		6.0/12.528	
Refrigerant piping size	Liquid	Φmm	6.35(1/4")×4		6.35(1/4")×5	
	Gas	Φmm	9.52(3/8")×4		9.52(3/8")×5	
Outdoor operating temperature range	Cooling	°C	-15~43			
	Heating	°C	-15~24			
Number of Connectable indoor units		Min.2~Max.4	Min.2~Max.4	Min.4*~Max.5	Min.4*~Max.6	
Total indoor units capacity	kW	12.5	13.5	16.0	19.5	

* The data are measured under the following conditions(ISO-T1). Cooling: Indoor temp. of 27°CDB, 19°CWB, and outdoor temp. of 35°CDB. Heating: Indoor temp. of 20°CDB, and outdoor temp. of 7°CDB, 6°CWB.

* Sound level Indicates the value in an anechoic chamber. During operation these values are somewhat higher due to ambient conditions.

* 'tonne(s) of CO₂ equivalent' means a quantity of greenhouse gases- expressed as the product of the weight of the greenhouse gases in metric tonnes and of their global warming potential.

* In case of SRK71ZR+SRK71ZR, 2 Indoor units can be connectable. In case of the combination with SRK-ZSX, SRK71ZR & FDE50VG, only 3 indoor units can be connectable. The total connecting capacity of indoor units should be between 100 ~ 160.