

Air Conditioning

Product Information

PEFY-P-VMS1-E
Ultra Thin Ceiling Concealed
Ducted Indoor Unit

Making a
World of
Difference

CITY MULTI



The ultra thin ceiling concealed ducted indoor unit offers increased flexibility and is particularly suitable for places where low noise operation is desired from a slimline body, such as hotels.

Key Features

- Ultra thin body - height of only 200mm & width of only 790mm (size P15-32)
- Extremely quiet operation - as low as 22dBA (size P15-20)
- Static pressure of 5-50Pa
- Available in a size P15, ideal for hotel rooms



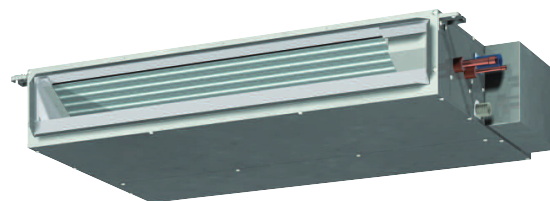
Cooling | Heating | Ventilation | Controls

Product Information

PEFY-P-VMS1-E

Ultra Thin Ceiling Concealed Ducted Indoor Unit

Making a World of Difference



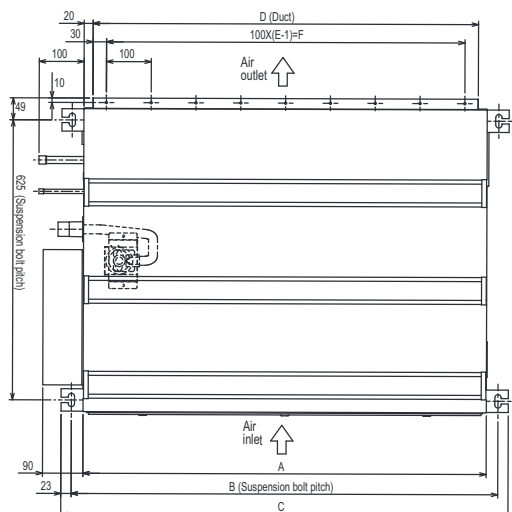
INDOOR UNITS		PEFY-P15VMS1-E	PEFY-P20VMS1-E	PEFY-P25VMS1-E	PEFY-P32VMS1-E	PEFY-P40VMS1-E	PEFY-P50VMS1-E	PEFY-P63VMS1-E
CAPACITY (kW)	Heating (nominal)	1.9	2.5	3.2	4.0	5.0	6.3	8.0
	Cooling (nominal)	1.7	2.2	2.8	3.6	4.5	5.6	7.1
	UK Heating	1.9	2.5	3.2	4.0	5.0	6.3	8.0
	UK Total Cooling - Hi (Sensible)	1.50 (1.40)	2.00 (1.70)	2.50 (2.10)	3.20 (2.50)	4.10 (3.00)	5.00 (3.70)	6.40 (4.70)
	UK Total Cooling - Mi2	-	-	-	-	-	-	-
	UK Total Cooling - Mi1	1.44	1.89	2.32	2.99	3.95	4.78	6.13
POWER INPUT (kW)	UK Total Cooling - Lo	1.34	1.76	2.07	2.63	3.70	4.51	5.77
	Heating (nominal)	0.03	0.03	0.04	0.05	0.05	0.07	0.07
	Cooling (nominal)	0.05	0.05	0.06	0.07	0.07	0.09	0.09
AIRFLOW (l/s)	Lo-Mi-Hi	83-100-117	91-108-133	91-117-150	100-133-167	133-158-183	158-183-217	200-233-275
EXTERNAL STATIC PRESSURE (Pa)		5-15-35-50	5-15-35-50	5-15-35-50	5-15-35-50	5-15-35-50	5-15-35-50	5-15-35-50
SOUND PRESSURE LEVEL (dBA)**	Lo-Mi-Hi	22-24-28	22-25-29	24-26-30	24-27-32	28-30-33	30-32-35	30-33-36
WEIGHT (kg)		19	19	19	20	24	24	28
DIMENSIONS (mm)	Width	790	790	790	790	990	990	1190
	Depth	700	700	700	700	700	700	700
	Height	200	200	200	200	200	200	200
ELECTRICAL SUPPLY		220-240v, 50Hz	220-240v, 50Hz	220-240v, 50Hz	220-240v, 50Hz	220-240v, 50Hz	220-240v, 50Hz	220-240v, 50Hz
PHASE		Single	Single	Single	Single	Single	Single	Single
RUNNING CURRENT (A)	Heating / Cooling	0.31 / 0.42	0.36 / 0.47	0.39 / 0.50	0.39 / 0.50	0.45 / 0.56	0.56 / 0.67	0.61 / 0.72
FUSE RATING (BS88) - HRC (A)		6	6	6	6	6	6	6
MAINS CABLE No. Cores		3	3	3	3	3	3	3

Note: *1 Additional sound data is available for this model. Separated inlet and breakout sound power level and discharge sound power level data is available on request.

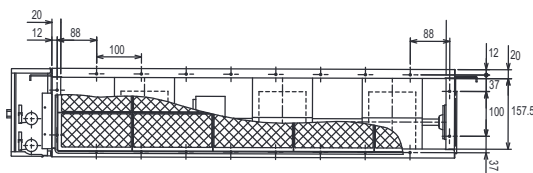
PRODUCT DIMENSIONS

PEFY-P15/20/25/32/40/50/63VMS1-E

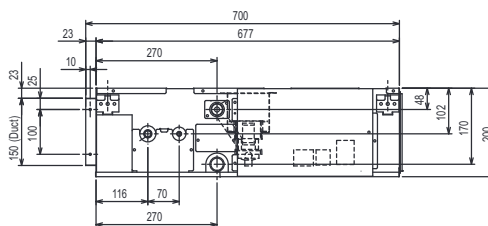
Upper View



Front View



Side View



Model	A	B	C	D	E	F
PEFY-P15-32VMS1-E	700	752	798	660	7	600
PEFY-P40-50VMS1-E	900	952	998	860	9	800
PEFY-P63VMS1-E	1100	1152	1198	1060	11	1000



Telephone: 01707 282880

email: air.conditioning@meuk.mee.com

web: airconditioning.mitsubishielectric.co.uk

UNITED KINGDOM Mitsubishi Electric Europe Living Environment Systems Division

Travellers Lane, Hatfield, Hertfordshire, AL10 8XB, England General Enquiries Telephone: 01707 282880 Fax: 01707 278881

IRELAND Mitsubishi Electric Europe Westgate Business Park, Ballymount, Dublin 24, Ireland

Telephone: Dublin (01) 419 8800 Fax: Dublin (01) 419 8890 International code: (003531)

Country of origin: United Kingdom – Japan – Thailand – Malaysia. ©Mitsubishi Electric Europe B.V. Mitsubishi and Mitsubishi Electric are trademarks of Mitsubishi Electric Europe B.V. The company reserves the right to make any variation in technical specification to the equipment described, or to withdraw or replace products without prior notification or public announcement. Mitsubishi Electric is constantly developing and improving its products. All descriptions, illustrations, drawings and specifications in this publication represent only general particulars and shall not form part of any contract. All goods are supplied subject to the Company's General Conditions of Sale, a copy of which is available on request. Third-party product and brand names may be trademarks or registered trademarks of their respective owners.

Note: The fuse rating is for guidance only. Please refer to the relevant databook for detailed specification. It is the responsibility of a qualified electrician/electrical engineer to select the correct cable size and fuse rating based on current regulation and site specific conditions. Mitsubishi Electric's air conditioning equipment and heat pump systems contain a fluorinated greenhouse gas, R410A (GWP:2088), R32 (GWP:675), R407C (GWP:1774) or R134a (GWP:1430). These GWP values are based on Regulation (EU) No 517/2014 from IPCC 4th edition. In case of Regulation (EU) No.626/2011 from IPCC 3rd edition, these are as follows: R410A (GWP:1975), R32 (GWP: 650), R407C (GWP:1650) or R134a (GWP:1300).



www.greengateway.mitsubishielectric.co.uk

Mitsubishi Electric UK's commitment
to the environment



Follow us @meuk_les
Follow us @green_gateway



Mitsubishi Electric
Living Environmental Systems UK



mitsubishielectric2



thehub.mitsubishielectric.co.uk



Effective as of September 2017