

PSA-M R32 Floor Standing System

Power Inverter Heat Pump

The **PSA-M Power Inverter** range is a floor standing system that blends a host of outstanding features with a sophisticated streamlined design. Offering high seasonal efficiency, advanced control options and quiet operation, this range allows installation where limited ceiling space is available.

Key Features & Benefits

- Built in PAR-41MAA controller allows effective energy consumption monitoring
- Increased comfort levels through advanced airflow and smart defrost features
- 100m pipe run (size 100-140), increasing application capability
- 14°C set point option; ideal for applications where a specialist ambient condition is required
- Quick and easy installation, saving on time and cost
- Compact body and minimal footprint - ideal for applications where space-saving is a requirement



PSA-M - INDOOR UNITS		PSA-M71KA	PSA-M100KA	PSA-M100KA	PSA-M125KA	PSA-M125KA	PSA-M140KA	PSA-M140KA
CAPACITY (kW)	Heating (nominal)	7.6 (3.5-10.2)	11.2 (4.5-14.0)	11.2 (4.5-14.0)	14.0 (5.0-16.0)	14.0 (5.0-16.0)	16.0 (5.7-18.0)	16.0 (5.7-18.0)
	Cooling (nominal)	7.1 (3.3-8.1)	9.5 (4.9-11.4)	9.5 (4.9-11.4)	12.5 (5.5-14.0)	12.5 (5.5-14.0)	13.4 (6.2-15.0)	13.4 (6.2-15.0)
	Heating (UK)	6.45 (3.0-8.65)	9.5 (3.85-11.9)	9.5 (3.85-11.9)	11.9 (4.25-13.6)	11.9 (4.25-13.6)	13.6 (4.84-15.3)	13.6 (4.84-15.3)
	Cooling (UK)	6.55 (3.05-7.45)	9.2 (4.5-10.5)	9.2 (4.5-10.5)	11.4 (5.05-12.9)	11.4 (5.05-12.9)	12.3 (5.7-13.8)	12.3 (5.7-13.8)
SHF (nominal)		0.79	0.73	0.73	0.72	0.72	0.71	0.71
COP / EER (nominal)		3.25 / 3.76	3.53 / 3.81	3.53 / 3.81	3.11 / 3.16	3.11 / 3.16	3.20 / 3.37	3.20 / 3.37
SCOP (ηsh) / SEER (ηsc) (BS EN14825)		4.0 (157.8%) / 6.4 (266.2%)	4.1 (161.3%) / 5.7 (234.6%)	4.1 (161.3%) / 5.6 (232.9%)	3.9 (153.1%) / 5.2 (212.0%)	3.9 (153.0%) / 5.1 (210.9%)	4.0 (158.1%) / 6.1 (249.1%)	4.0 (158.1%) / 6.0 (247.8%)
ErP ENERGY EFFICIENCY CLASS Heating/Cooling		A+ / A++	A+ / A+	A+ / A+	A / A	A / A	A+ / A++	A+ / A+
AIRFLOW (l/s)	Lo-Mi-Hi	333-367-400	417-467-500	417-467-500	417-467-517	417-467-517	417-467-517	417-467-517
PIPE SIZE mm (in)	Gas/Liquid	15.88 (5/8") / 9.52 (3/8")	15.88 (5/8") / 9.52 (3/8")	15.88 (5/8") / 9.52 (3/8")	15.88 (5/8") / 9.52 (3/8")	15.88 (5/8") / 9.52 (3/8")	15.88 (5/8") / 9.52 (3/8")	15.88 (5/8") / 9.52 (3/8")
SOUND PRESSURE LEVEL (dBA)	Lo-Mi-Hi	40-42-44	45-49-51	45-49-51	45-49-51	45-49-51	45-49-51	45-49-51
SOUND POWER LEVEL (dBA)		60	65	65	66	66	66	66
DIMENSIONS (mm)	Width x Depth x Height	600 x 360 x 1900	600 x 360 x 1900	600 x 360 x 1900	600 x 360 x 1900	600 x 360 x 1900	600 x 360 x 1900	600 x 360 x 1900
WEIGHT (kg)	Unit / Panel	46	46	46	46	46	48	48
ELECTRICAL SUPPLY		Fed by Outdoor Unit	Fed by Outdoor Unit	Fed by Outdoor Unit	Fed by Outdoor Unit	Fed by Outdoor Unit	Fed by Outdoor Unit	Fed by Outdoor Unit
FUSE RATING (BS88) - HRC (A)		6	6	6	6	6	6	6
INTERCONNECTING CABLE No. Cores		4	4	4	4	4	4	4
WIRED REMOTE CONTROLLER REFERENCE		PAR-41MAA	PAR-41MAA	PAR-41MAA	PAR-41MAA	PAR-41MAA	PAR-41MAA	PAR-41MAA

PUZ-ZM - OUTDOOR UNITS		PUZ-ZM71VHA2	PUZ-ZM100VKA2	PUZ-ZM100YKA2 ^③	PUZ-ZM125VKA2	PUZ-ZM125YKA2 ^③	PUZ-ZM140VKA2	PUZ-ZM140YKA2 ^③
SOUND PRESSURE LEVEL (dBA)	Heating/Cooling	49 / 47	51 / 49	51 / 49	52 / 50	52 / 50	52 / 50	52 / 50
SOUND POWER LEVEL (dBA)	Cooling	67	69	69	70	70	70	70
WEIGHT (kg)		67	105	111	105	114	105	118
DIMENSIONS (mm)	Width x Depth x Height	950 x 330 + 25 x 943	1050 x 330 + 40 x 1338	1050 x 330 + 40 x 1338	1050 x 330 + 40 x 1338	1050 x 330 + 40 x 1338	1050 x 330 + 40 x 1338	1050 x 330 + 40 x 1338
ELECTRICAL SUPPLY		220-240v, 50Hz	220-240v, 50Hz	380-415v, 50Hz	220-240v, 50Hz	380-415v, 50Hz	220-240v, 50Hz	380-415v, 50Hz
PHASE		Single	Single	Three	Single	Three	Single	Three
SYSTEM POWER	Heating/Cooling (nominal)	2.338 / 1.888	3.172 / 2.493	3.172 / 2.493	4.501 / 3.955	4.501 / 3.955	5.000 / 3.976	5.000 / 3.976
INPUT (kW)	Heating/Cooling (UK)	2.08 / 1.60	2.53 / 2.14	2.53 / 2.14	4.00 / 3.35	4.00 / 3.35	4.44 / 3.38	4.44 / 3.38
STARTING CURRENT (A)		5.3	10.7	2.6	13.2	3.3	13.2	3.3
SYSTEM RUNNING CURRENT (A)	Heating/Cooling [MAX]	9.05 / 6.96 [19.4]	11.01 / 9.31 [20.7]	6.33 / 5.35 [8.7]	17.37 / 14.58 [27.2]	9.50 / 8.38 [9.7]	19.33 / 14.69 [30.7]	11.11 / 8.45 [12.5]
FUSE RATING (BS88) - HRC (A)		25	25	16	32	16	40	16
MAINS CABLE No. Cores		3	3	5	3	5	3	3
MAX PIPE LENGTH (m)		55	100	100	100	100	100	100
MAX HEIGHT DIFFERENCE (m)		30	30	30	30	30	30	30
CHARGE REFRIGERANT (kg) / CO ₂ EQUIVALENT (t) R32 (GWP 675)		2.80 / 1.89 (30m)	3.60 / 2.43 (40m)	3.60 / 2.43 (40m)	3.60 / 2.43 (40m)	3.60 / 2.43 (40m)	3.60 / 2.43 (40m)	3.60 / 2.43 (40m)
MAX ADDITIONAL REFRIGERANT (kg) / CO ₂ EQUIVALENT (t) R32 (GWP 675)		0.80 / 0.54	2.40 / 1.62	2.40 / 1.62	2.40 / 1.62	2.40 / 1.62	2.40 / 1.62	2.40 / 1.62

③ Three Phase Note: Includes built in PAR-41MAA wired remote controller.



Accessories

Outdoor Units

PAC-SG59SG

Air outlet guide for PUZ-ZM71VHA2

PAC-SH96SG

Air outlet guide for PUZ-ZM100-140VKA2/YKA2

PAC-SJ71FM-E

30Pa outdoor fan motor for PUZ-ZM100-140VKA2/YKA2

System Control Units

PAC-SA89TA

Remote on/off adaptor (3 wire adaptor)

PAC-SA88HA

Run/fault adaptor (5 wire adaptor)

PAC-SE41TS-E

Remote sensor

MAC-587IF-E

Interface for connection to Wi-Fi MELCloud service

MELCOBEMS MINI (A1M+)

Modbus and BACnet MSTP CN105 adaptor

MELCORETAIL MINI

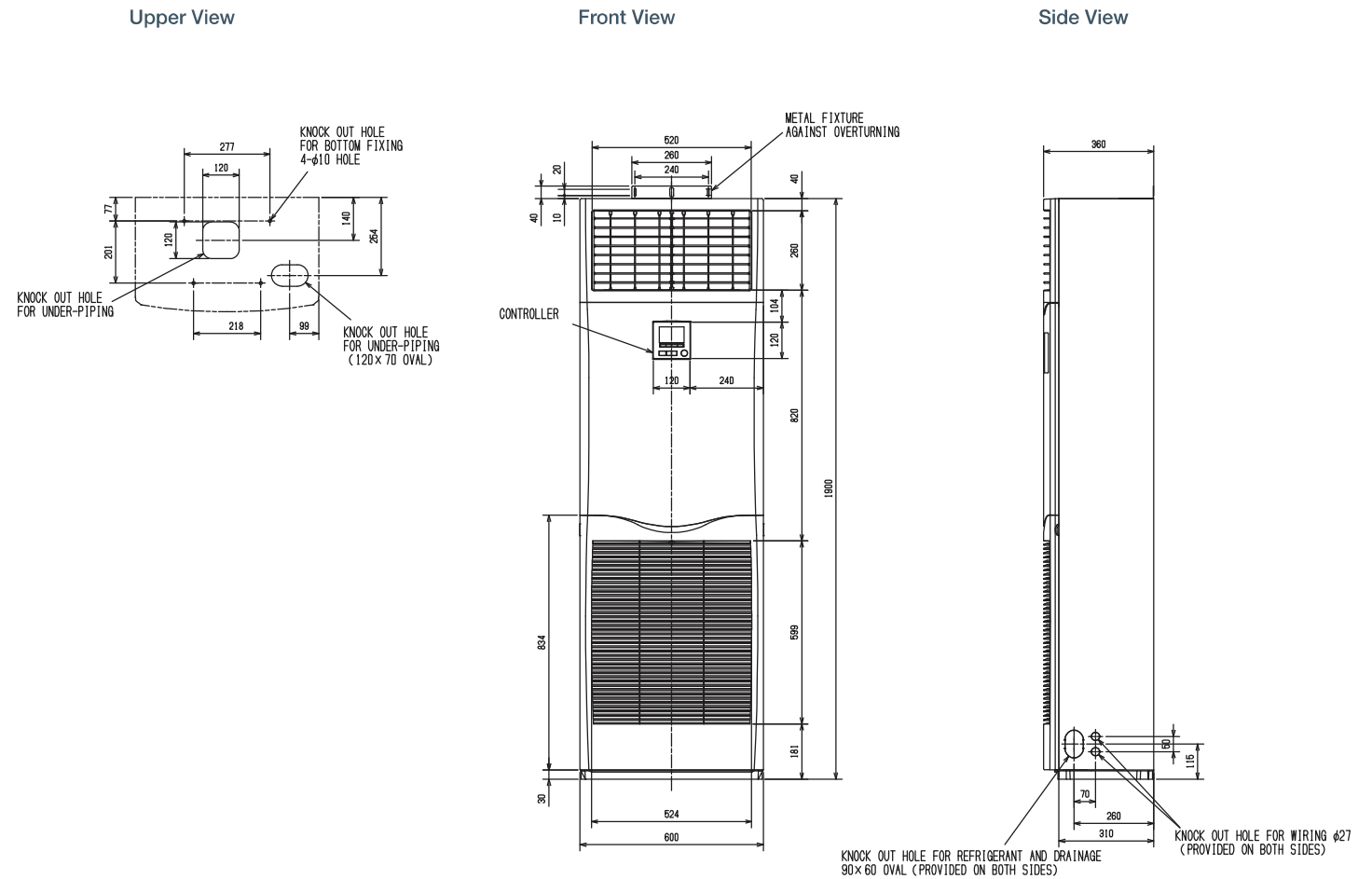
Retail control and input / output interface

PAC-SJ95MA

M-NET adaptor for size 71 to 140

Product Dimensions

PSA-M71/100/125/140KA



Note: Please see page 1.3.66 for the full range of accessories.

PSA-M R32 Floor Standing System

Standard Inverter Heat Pump

The cost-effective **PSA-M Standard Inverter** range is a floor standing system that blends a host of outstanding features with a sophisticated streamlined design. Offering advanced control options and quiet operation, this range allows installation where limited ceiling space is available

Key Features & Benefits

- Built in PAR-41MAA controller allows effective energy consumption monitoring
- Increased comfort levels through advanced airflow and smart defrost features
- 14°C set point option; ideal for applications where a specialist ambient condition is required
- Quick and easy installation, saving on time and cost
- Compact body and minimal footprint - ideal for applications where space-saving is a requirement
- In-built leak detection



PSA-M - INDOOR UNITS		PSA-M71KA	PSA-M100KA	PSA-M100KA	PSA-M125KA	PSA-M125KA	PSA-M140KA	PSA-M140KA
CAPACITY (kW)	Heating (nominal)	8.0 (2.1-10.2)	11.2 (2.8-12.5)	11.2 (2.8-12.5)	13.5 (4.8-15.0)	13.5 (4.8-15.0)	15.0 (4.9-15.8)	15.0 (4.9-15.8)
	Cooling (nominal)	7.1 (2.2-8.1)	9.4 (3.7-10.6)	9.4 (3.7-10.6)	12.1 (5.6-13.0)	12.1 (5.6-13.0)	13.6 (5.8-13.7)	13.6 (5.8-13.7)
	Heating (UK)	6.8 (1.8-8.65)	9.5 (2.4-10.65)	9.5 (2.4-10.65)	11.5 (4.1-12.75)	11.5 (4.1-12.75)	12.75 (4.15-13.45)	12.75 (4.15-13.45)
	Cooling (UK)	6.55 (2.0-7.45)	8.65 (3.4-9.75)	8.65 (3.4-9.75)	11.15 (5.15-11.95)	11.15 (5.15-11.95)	12.5 (5.35-12.6)	12.5 (5.35-12.6)
SHF (nominal)		0.79	0.73	0.73	0.72	0.72	0.71	0.71
COP / EER (nominal)		3.25 / 3.76	3.53 / 3.81	3.53 / 3.81	3.11 / 3.16	3.11 / 3.16	3.20 / 3.37	3.20 / 3.37
SCOP (nsh) / SEER (nsc) (BS EN14825)		4.0 (157.8%) / 6.4 (266.2%)	4.1 (161.3%) / 5.7 (234.6%)	4.1 (161.3%) / 5.6 (232.9%)	3.9 (153.1%) / 5.2 (212.0%)	3.9 (153.0%) / 5.1 (210.9%)	4.0 (158.1%) / 6.1 (249.1%)	4.0 (158.1%) / 6.0 (247.8%)
EP ENERGY EFFICIENCY CLASS Heating/Cooling		A+ / A++	A+ / A+	A+ / A+	A / A	A / A	A+ / A++	A+ / A+
AIRFLOW (l/s)	Lo-Mi-Hi	333-367-400	417-467-500	417-467-500	417-467-517	417-467-517	417-467-517	417-467-517
PIPE SIZE mm (in)	Gas/Liquid	15.88 (5/8") / 9.52 (3/8")	15.88 (5/8") / 9.52 (3/8")	15.88 (5/8") / 9.52 (3/8")	15.88 (5/8") / 9.52 (3/8")	15.88 (5/8") / 9.52 (3/8")	15.88 (5/8") / 9.52 (3/8")	15.88 (5/8") / 9.52 (3/8")
SOUND PRESSURE LEVEL (dBA)	Lo-Mi-Hi	40-42-44	45-49-51	45-49-51	45-49-51	45-49-51	45-49-51	45-49-51
SOUND POWER LEVEL (dBA)		60	65	65	66	66	66	66
DIMENSIONS (mm)	Width x Depth x Height	600 x 360 x 1900	600 x 360 x 1900	600 x 360 x 1900	600 x 360 x 1900	600 x 360 x 1900	600 x 360 x 1900	600 x 360 x 1900
WEIGHT (kg)	Unit / Panel	46	46	46	46	46	48	48
ELECTRICAL SUPPLY		Fed by Outdoor Unit	Fed by Outdoor Unit	Fed by Outdoor Unit	Fed by Outdoor Unit	Fed by Outdoor Unit	Fed by Outdoor Unit	Fed by Outdoor Unit
FUSE RATING (BS88) - HRC (A)		6	6	6	6	6	6	6
INTERCONNECTING CABLE No. Cores		4	4	4	4	4	4	4
WIRED REMOTE CONTROLLER REFERENCE		PAR-41MAA	PAR-41MAA	PAR-41MAA	PAR-41MAA	PAR-41MAA	PAR-41MAA	PAR-41MAA

SUZ-M / PUZ-M - OUTDOOR UNITS		SUZ-M71VAR1	PUZ-M100VKA2	PUZ-M100YKA2 ^③	PUZ-M125VKA2	PUZ-M125YKA2 ^③	PUZ-M140VKA2	PUZ-M140YKA2 ^③
SOUND PRESSURE LEVEL (dBA)	Heating/Cooling	49 / 51	51 / 54	51 / 54	54 / 56	54 / 56	55 / 57	55 / 57
SOUND POWER LEVEL (dBA)	Cooling	66	70	70	72	72	73	73
WEIGHT (kg)		56	76	78	84	85	84	85
DIMENSIONS (mm)	Width x Depth x Height	840 x 330 x 880	1050 x 330 x 981	1050 x 330 x 981	1050 x 330 x 981	1050 x 330 x 981	1050 x 330 x 981	1050 x 330 x 981
ELECTRICAL SUPPLY		220-240v, 50Hz	220-240v, 50Hz	380-415v, 50Hz	220-240v, 50Hz	380-415v, 50Hz	220-240v, 50Hz	380-415v, 50Hz
PHASE		Single	Single	Three	Single	Three	Single	Three
SYSTEM POWER	Heating/Cooling (nominal)	2.105 / 2.028	3.01 / 2.71	3.01 / 2.71	3.63 / 4.01	3.63 / 4.01	4.39 / 4.96	4.39 / 4.96
INPUT (kW)	Heating/Cooling (UK)	1.87 / 1.72	2.35 / 2.47	2.71 / 2.50	3.27 / 3.33	3.27 / 3.33	3.59 / 4.12	3.59 / 4.12
STARTING CURRENT (A)		9.5	13.0	4.7	17.4	6.3	21.5	7.8
SYSTEM RUNNING CURRENT (A)	Heating/Cooling [MAX]	8.15 / 7.47 [16.7]	13.0 / 11.7 [20]	4.7 / 4.2 [11.5]	15.6 / 17.4 [26.5]	5.6 / 6.3 [11.5]	19.0 / 21.5 [30]	6.9 / 7.8 [11.5]
FUSE RATING (BS88) - HRC (A)		20	32	16	32	16	40	16
MAINS CABLE No. Cores		3	3	5	3	5	3	5
MAX PIPE LENGTH (m)		30	55	55	65	65	65	65
MAX HEIGHT DIFFERENCE (m)		30	30	30	30	30	30	30
CHARGE REFRIGERANT (kg) / CO ₂ EQUIVALENT (t) R32 (GWP 675)		1.45 / 0.98 (7m)	3.10 / 2.09 (30m)	3.10 / 2.09 (30m)	3.60 / 2.43 (30m)	3.60 / 2.43 (30m)	3.60 / 2.43 (30m)	3.60 / 2.43 (30m)
MAX ADDITIONAL REFRIGERANT (kg) / CO ₂ EQUIVALENT (t) R32 (GWP 675)		2.37 / 1.80	4.10 / 2.77	4.10 / 2.77	5.00 / 3.38	5.00 / 3.38	5.00 / 3.38	5.00 / 3.38

③ Three Phase Note: Includes built in PAR-41MAA wired remote controller.



Accessories

Outdoor Units

MAC-886SG

Air outlet guide for SUZ-M71VAR1

PAC-SH96SG

Air outlet guide for PUZ-M100-140VKA2/YKA2

System Control Units

PAC-SA89TA

Remote on/off adaptor (3 wire adaptor)

PAC-SA88HA

Run/fault adaptor (5 wire adaptor)

PAC-SE41TS-E

Remote sensor

MAC-587IF-E

Interface for connection to Wi-Fi MELCloud service

MELCOBEMS MINI (A1M+)

Modbus and BACnet MSTP CN105 adaptor

MELCORETAIL MINI

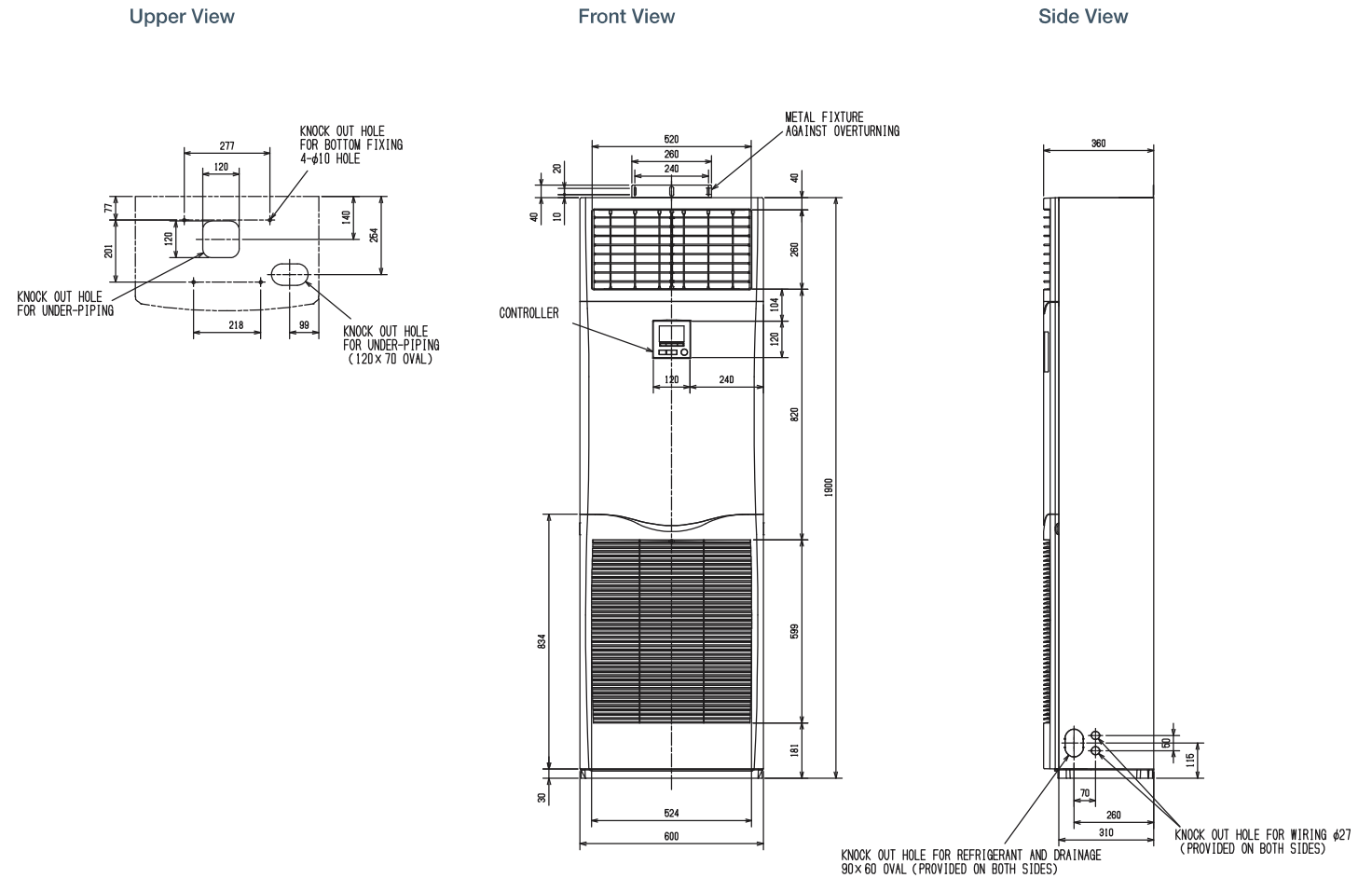
Retail control and input / output interface

PAC-SJ95MA

M-NET adaptor for size 71 to 140

Product Dimensions

PSA-M71/100/125/140KA



Note: Please see page 1.3.66 for the full range of accessories.