

Lossnay VL-CZPVU-R/L-E

The residential Lossnay range of Mechanical Ventilation with Heat Recovery (MVHR) units create an environment of constant clean and healthy air at home.

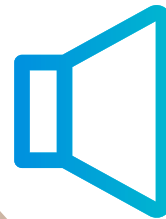


Ventilation Product Information

These systems are designed to continuously extract from bathrooms, kitchens, toilets, and utility rooms where air can become polluted with high humidity, fumes, and chemicals on a regular basis.

The Lossnay supplies a balanced flow of fresh air from outside to living spaces such as bedrooms and living rooms. Whilst doing this the unit minimises the energy lost by recovering the heat from the extracted air and transferring this to the supplied fresh air.

Designed to be as quiet as possible, these Lossnay models are perfect for residential homes and apartments where occupants can enjoy all the benefits of ventilation without even knowing the unit is running.

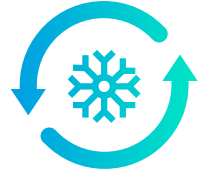


**ULTRA
QUIET
OPERATION**



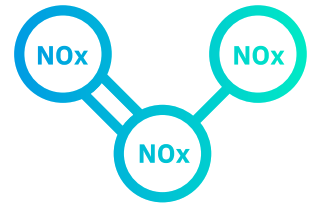
Built-in full bypass function

This function allows the unit to bring in fresh air from outside without recovering the heat. This can be ideal for cooling down a dwelling that's overheated during the day when the outside temperature has dropped in the evening. Using temperature sensors, the unit can automatically enter bypass mode when it detects the space is hotter than desired and the outside air is cool enough.



Third Filter Slot

A third filter slot can incorporate an optional NO_x filter on the supply air side to clean the air even in the most polluted environments. Having the filter built into the unit itself provides easy access for regular maintenance.



Built-in LCD Controller

The LCD controller allows easy control and commissioning of the unit with a clear display showing normal, boost, and purge modes. Up to 4 speed settings can be commissioned digitally in percentage increments to ensure constant and accurate settings.





VL-CZPVU-R/L-E
Residential Lossnay Range

The perfect fresh air solution for residential dwellings

Key benefits

- Ultra quiet noise levels
- Optional particulate matter filter, including NOx filtration
- Full summer bypass function
- Digital controller included for ease of commissioning and use
- Automated boost via live switch or volt free contact
- Cloud control





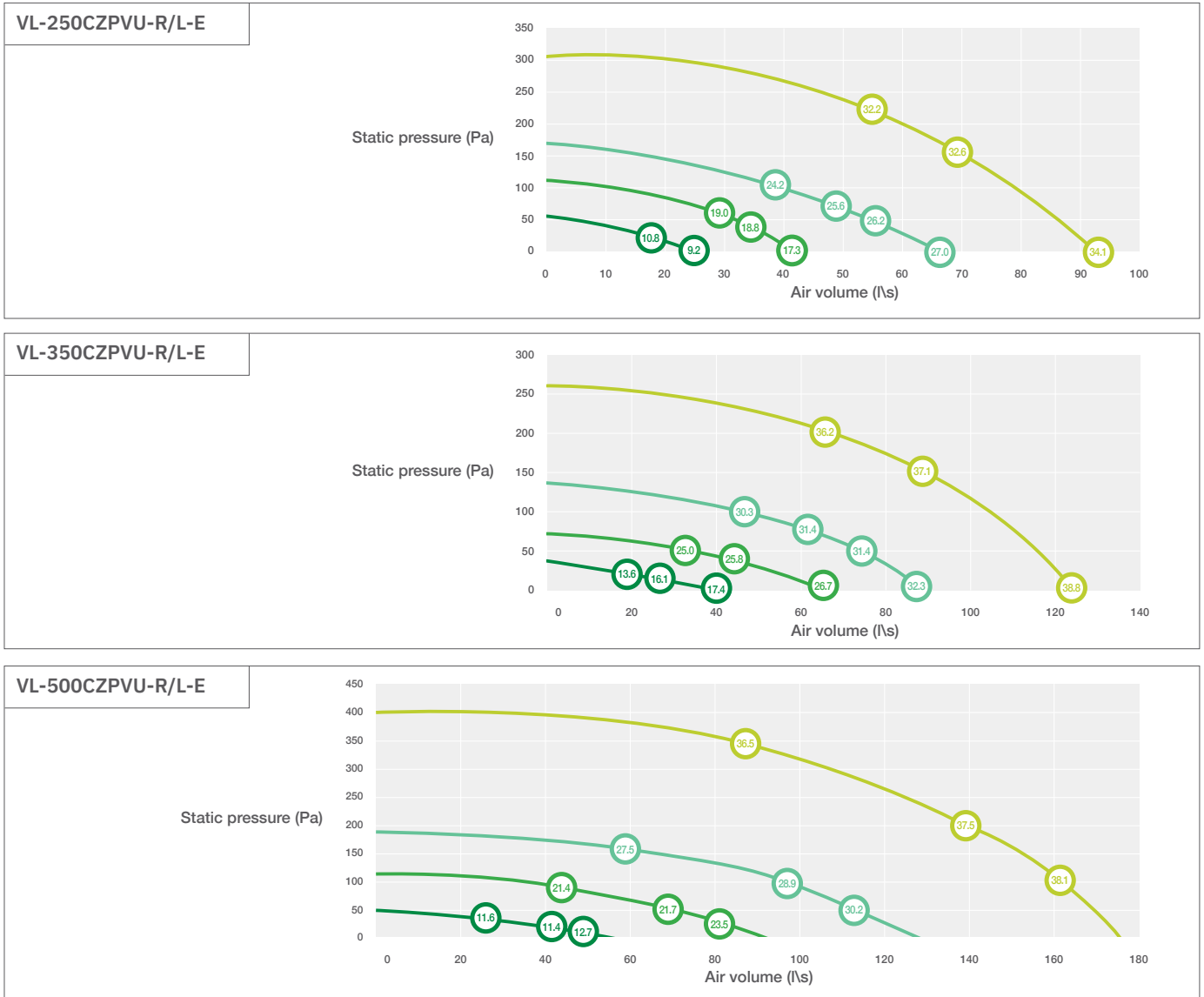
MODEL	VL-250CZPVU-R/L-E	VL-350CZPVU-R/L-E	VL-500CZPVU-R/L-E
DIMENSIONS H X W X D (mm)	563 x 595 x 386	623 x 658 x 462	632 x 725 x 586
WEIGHT (KG)	26	32	39
ELECTRICAL POWER SUPPLY	220-240V 50Hz		
MAX RUNNING CURRENT (A)	1.0	1.32	2.3
SUMMER BYPASS	Full Bypass		
SPIGOT DIAMETER (mm)	125	150	160 / 180
STANDARD FILTER (ISO 16890:2016/EN779:2012)	Outside Air	Coarse 55% / G3	
	Return Air	Coarse 55% / G3	
OPTIONAL FILTER(S)	Supply Air	NOx 90%	
	Outside Air	ePM2.5 50%	

SAP 2012 PCDB data

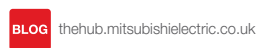
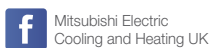
	VL-250CZPVU-R/L-E		VL-350CZPVU-R/L-E		VL-500CZPVU-R/L-E	
	SFP W/(l/s)	Heat exchange efficiency (%)	SFP W/(l/s)	Heat exchange efficiency (%)	SFP W/(l/s)	Heat exchange efficiency (%)
K + 1 (21 l/s)	0.62	90	0.86	90	0.80	91
K + 2 (29 l/s)	0.67	89	0.80	90	0.72	90
K + 3 (37 l/s)	0.79	88	0.84	89	0.74	90
K + 4 (45 l/s)	1.00	87	0.96	89	0.82	89
K + 5 (53 l/s)	1.19	87	1.08	88	0.91	88
K + 6 (61 l/s)	-	-	1.28	87	1.09	88
K + 7 (69 l/s)	-	-	-	-	1.24	88

Performance curves and breakout sound data

*dB(A) level measured at 3m hemispherical. Full sound power spectrum available for breakout and in-duct upon request.



Telephone: 01707 282880
email: air.conditioning@meuk.mee.com
les.mitsubishielectric.co.uk



UNITED KINGDOM Mitsubishi Electric Europe Living Environment Systems Division, Travellers Lane, Hatfield, Hertfordshire, AL10 8XB, England. Telephone: 01707 282880 Fax: 01707 278881
IRELAND Mitsubishi Electric Europe, Westgate Business Park, Ballymount, Dublin 24, Ireland. Telephone: (01) 419 8800 Fax: (01) 419 8890 International code: (003531)

Country of origin: United Kingdom - Japan - Thailand - Malaysia. ©Mitsubishi Electric Europe 2020. Mitsubishi and Mitsubishi Electric are trademarks of Mitsubishi Electric Europe B.V. The company reserves the right to make any variation in technical specification to the equipment described, or to withdraw or replace products without prior notification or public announcement. Mitsubishi Electric is constantly developing and improving its products. All descriptions, illustrations, drawings and specifications in this publication present only general particulars and shall not form part of any contract. All goods are supplied subject to the Company's General Conditions of Sale, a copy of which is available on request. Third-party product and brand names may be trademarks or registered trademarks of their respective owners.

Note: The fuse rating is for guidance only. Please refer to the relevant databook for detailed specification. It is the responsibility of a qualified electrician/electrical engineer to select the correct cable size and fuse rating based on current regulation and site specific conditions. Mitsubishi Electric's air conditioning equipment and heat pump systems contain a fluorinated greenhouse gas, R410A (GWP:2088), R32 (GWP:675), R407C (GWP:1774) or R134a (GWP:1430). *These GWP values are based on Regulation (EU) No 517/2014 from IPCC 4th edition. In case of Regulation (EU) No.626/2011 from IPCC 3rd edition, these are as follows. R410A (GWP:1975), R32 (GWP:550), R407C (GWP:1650) or R134a (GWP:1300).

Effective as of November 2020

