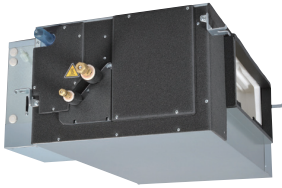
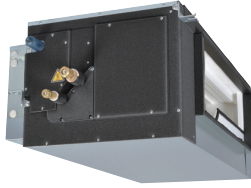


Specifications

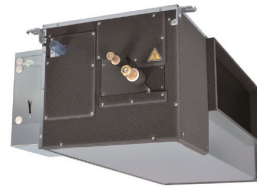
GUG Series



GUG-01SL-E



GUG-02SL-E



GUG-03SL-E

Model		GUG-01SL-E (Connection to LGH-50RVX-E or LGH-65RVX-E)								GUG-02SL-E (Connection to LGH-80RVX-E or LGH-100RVX-E)							
Refrigerant		R410A								R410A							
Electrical power supply		220-240V / 50Hz, 220V / 60Hz (Supplied from outdoor unit)								220-240V / 50Hz, 220V / 60Hz (Supplied from outdoor unit)							
Input power		Heating / Fan: 2.5W, Cooling: 12.4W								Heating / Fan: 2.5W, Cooling: 12.4W							
Running current		Less than 0.1A								Less than 0.1A							
Weight		21kg *Accessories: Approx. 1kg								26kg *Accessories: Approx. 1kg							
Function		Heating / Cooling / Auto / Fan *Auto is only available for RA temperature control								Heating / Cooling / Auto / Fan *Auto is only available for RA temperature control							
Function		RA (Return Air) temperature control RA (Return Air) temperature control / SA (Supply Air) temperature control [Must be set at initial setting and not possible to change from remote controller]															
Connectable Lossnay unit		LGH-50RVX-E				LGH-65RVX-E				LGH-80RVX-E				LGH-100RVX-E			
Capacity [kW]	Heating	6.5 (2.4 + 4.1)				7.7 (3.2 + 4.5)				10.0 (4.0 + 6.0)				13.2 (5.1 + 8.1)			
	Cooling	5.6 (2.0 + 3.6)				6.6 (2.6 + 4.0)				8.3 (3.3 + 5.0)				11.3 (4.2 + 7.1)			
SHF		0.66				0.69				0.69				0.66			
Performance index	Heating	4.09				4.72				4.62				4.42			
	Cooling	4.69				5.03				4.76				4.98			
Air flow range at SP3 and SP4		350 - 695 m³/h				350 - 900 m³/h				560 - 1200 m³/h				700 - 1200 m³/h			
Connectable outdoor unit		PUHZ-ZRP35				PUHZ-ZRP35				PUHZ-ZRP50				PUHZ-ZRP71			
Ext. piping		Diameter Liquid / Gas: 6.35 / 12.7 Maximum length: 50m, Maximum height: 30m				Diameter Liquid / Gas: 6.35 / 12.7 Maximum length: 50m, Maximum height: 30m				Diameter Liquid / Gas: 6.35 / 12.7 Maximum length: 50m, Maximum height: 30m				Diameter Liquid / Gas: 9.52 / 15.88 Maximum length: 50m, Maximum height: 30m			
Required optional parts		-				-				PAC-SH30RJ-E and PAC-SH50RJ-E				-			
Connectable Lossnay unit		SA (Supply Air) temperature control															
Capacity [kW]	Heating	-				-				LGH-80RVX-E				LGH-100RVX-E			
	Cooling	-				-				8.3 (3.3 + 5.0)				9.5 (4.2 + 5.3)			
SHF		-				-				0.69				0.73			
Performance index	Heating	-				-				4.62				5.09			
	Cooling	-				-				4.76				5.43			
Air flow range at SP3 and SP4		-				-				560 - 1200 m³/h				700 - 1200 m³/h			
Connectable outdoor unit		-				-				PUHZ-ZRP50				PUHZ-ZRP50			
Ext. piping		-				-				Diameter Liquid / Gas: 6.35 / 12.7 Maximum length: 50m, Maximum height: 30m				Diameter Liquid / Gas: 6.35 / 12.7 Maximum length: 50m, Maximum height: 30m			
Required optional parts		-				-				PAC-SH30RJ-E and PAC-SH50RJ-E				PAC-SH30RJ-E and PAC-SH50RJ-E			
Connectable Lossnay unit		Ventilation specifications															
Fan speed		LGH-50RVX-E				LGH-65RVX-E				LGH-80RVX-E				LGH-100RVX-E			
Air Volume	[m³/h]	SP4	SP3	SP2	SP1	SP4	SP3	SP2	SP1	SP4	SP3	SP2	SP1	SP4	SP3	SP2	SP1
	[L/s]	500	375	250	125	650	488	325	163	800	600	400	200	1,000	750	500	250
External static pressure [Pa]		105	59	26	7	95	53	24	6	130	73	33	8	130	73	33	8

Model		GUG-03SL-E (Connection to LGH-150RVX-E or LGH-200RVX-E)								GUG-03SL-E (Connection to LGH-150RVXT-E, LGH-200RVXT-E or LGH-250RVXT-E)											
Refrigerant		R410A								R410A											
Electrical power supply		220-240V / 50Hz, 220V / 60Hz (Supplied from outdoor unit)								220-240V / 50Hz, 220V / 60Hz (Supplied from outdoor unit)											
Input power		Heating / Fan: 2.5W, Cooling: 12.4W								Heating / Fan: 2.5W, Cooling: 12.4W											
Running current		Less than 0.1A								Less than 0.1A											
Weight		28kg *Accessories: Approx. 1kg								28kg *Accessories: Approx. 1kg											
Function		Heating / Cooling / Auto / Fan *Auto is only available for RA temperature control								Heating / Cooling / Auto / Fan *Auto is only available for RA temperature control											
Function		RA (Return Air) temperature control / SA (Supply Air) temperature control [Must be set at initial setting and not possible to change from remote controller]																			
Connectable Lossnay unit		LGH-150RVX-E				LGH-200RVX-E				LGH-150RVXT-E				LGH-200RVXT-E				LGH-250RVXT-E			
Capacity [kW]	Heating	20.7 (7.7 + 13.0)				23.8 (10.3 + 13.5)				20.4 (7.4 + 13.0)				23.8 (10.3 + 13.5)				26.1 (12.1 + 14.0)			
	Cooling	15.8 (6.3 + 9.5)				18.4 (8.4 + 10.0)				15.7 (6.2 + 9.5)				18.4 (8.4 + 10.0)				22.3 (9.8 + 12.5)			
SHF		0.68				0.76				0.68				0.76				0.87			
Performance index	Heating	4.24				5.02				4.07				4.86				4.75			
	Cooling	5.27				5.86				5.03				5.59				4.59			
Air flow range at SP3 and SP4		1050 - 2250 m³/h				1050 - 2600 m³/h				1050 - 2250 m³/h				1050 - 2600 m³/h				1750 - 2600 m³/h			
Connectable outdoor unit		PUHZ-ZRP100				PUHZ-ZRP100				PUHZ-ZRP100				PUHZ-ZRP100				PUHZ-ZRP125			
Ext. piping		Diameter Liquid / Gas: 9.52 / 15.88 Maximum length: 50m, Maximum height: 30m				Diameter Liquid / Gas: 9.52 / 15.88 Maximum length: 75m, Maximum height: 30m				Diameter Liquid / Gas: 9.52 / 15.88 Maximum length: 75m, Maximum height: 30m				Diameter Liquid / Gas: 9.52 / 15.88 Maximum length: 75m, Maximum height: 30m				Diameter Liquid / Gas: 9.52 / 15.88 Maximum length: 75m, Maximum height: 30m			
Connectable Lossnay unit		SA (Supply Air) temperature control																			
Capacity [kW]	Heating	16.6 (7.7 + 8.9)				19.5 (10.3 + 9.2)				16.3 (7.4 + 8.9)				19.5 (10.3 + 9.2)				21.6 (12.1 + 9.5)			
	Cooling	13.4 (6.3 + 7.1)				15.9 (8.5 + 7.4)				13.3 (6.2 + 7.1)				15.9 (8.5 + 7.4)				17.6 (9.8 + 7.8)			
SHF		0.85				0.90				0.86				0.90				0.95			
Performance index	Heating	5.46				6.30				5.16				6.01				5.97			
	Cooling	5.32				5.85				5.03				5.54				5.31			
Air flow range at SP3 and SP4		1050 - 2250 m³/h				1050 - 2600 m³/h				1050 - 2250 m³/h				1050 - 2600 m³/h				1000 - 2600 m³/h			
Connectable outdoor unit		PUHZ-ZRP71				PUHZ-ZRP71				PUHZ-ZRP71				PUHZ-ZRP71				PUHZ-ZRP71			
Ext. piping		Diameter Liquid / Gas: 9.52 / 15.88 Maximum length: 50m, Maximum height: 30m				Diameter Liquid / Gas: 9.52 / 15.88 Maximum length: 50m, Maximum height: 30m				Diameter Liquid / Gas: 9.52 / 15.88 Maximum length: 50m, Maximum height: 30m				Diameter Liquid / Gas: 9.52 / 15.88 Maximum length: 50m, Maximum height: 30m				Diameter Liquid / Gas: 9.52 / 15.88 Maximum length: 50m, Maximum height: 30m			
Connectable Lossnay unit		Ventilation specifications																			
Fan speed		LGH-150RVX-E				LGH-200RVX-E				LGH-150RVXT-E				LGH-200RVXT-E				LGH-250RVXT-E			
Air Volume	[m³/h]	SP4	SP3	SP2	SP1	SP4	SP3	SP2	SP1	SP4	SP3	SP2	SP1	SP4	SP3	SP2	SP1				
	[L/s]	1,500	1,125	750	375	2,000	1,500	1,000	500	1,500	1,125	750	375	2,000	1,500	1,000	500				
External static pressure [Pa]		150	84	38	9	105	59	26	7	150	84	38	9	145	82	36	9	140	79	35	9