

MLZ SERIES

Introducing a new type of ceiling cassette for the Multi-Split Series with streamlined interior dimensions and a sharp, sleek appearance.

MLZ-KP25/35/50VF

R32

MLZ-KY20VG

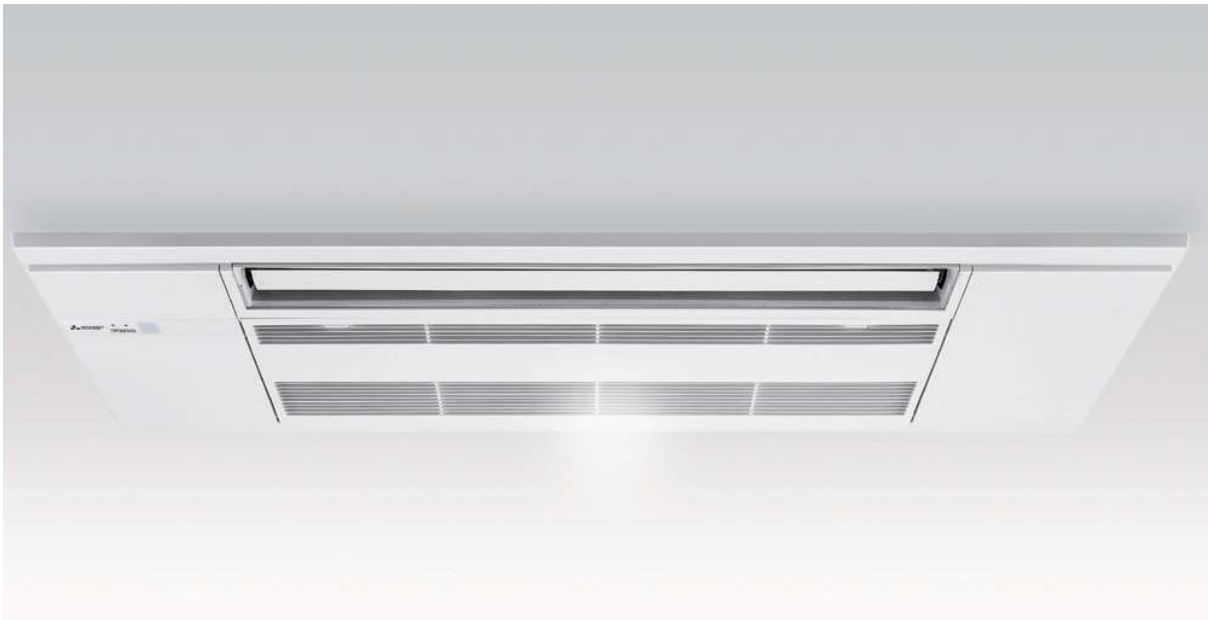


reddot award 2018 winner



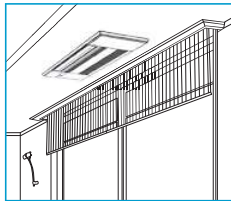
Slim Design KY KP

Industry leading slim body realized a simple design with linear beauty.



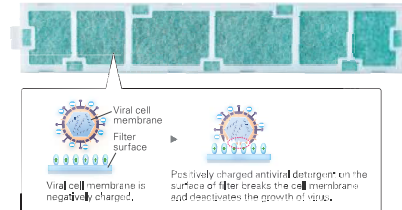
Ceiling Mounted KY KP

Installing the ceiling-mounted MLZ Series unit in a room creates a more spacious feel that enhances room comfort. This overhead format is also an excellent solution when lighting equipment is installed at the centre of the room and fixtures such as book shelves are mounted on wall surfaces.



V Blocking Filter KY

V Blocking Filter with antiviral effect inhibits 99% of adhered virus and other harmful substances, such as bacteria, mold and allergen. Two-layered filter with non-woven fabric and electrostatic filter can effectively capture and remove small particles from the air in your room.



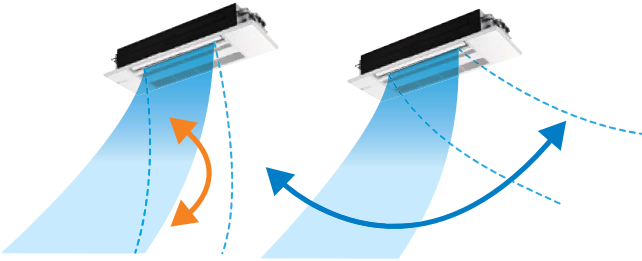
Set Airflow According to Ceiling Height KY KP

Dual-level airflow selection is engineered to accommodate specific ceiling heights. This is a key feature for adjusting airflow effectively when it is either too strong or too weak due to being mismatched with the height of the ceiling.

	20	25	35	50
Standard	2.4m	2.4m	2.4m	2.4m
High ceiling	2.7m	2.7m	2.7m	2.7m

Auto Vane Control KY KP

Outlet vanes can be moved left and right, and up and down using the remote controller. This improved airflow control feature solves the problem of drafts.



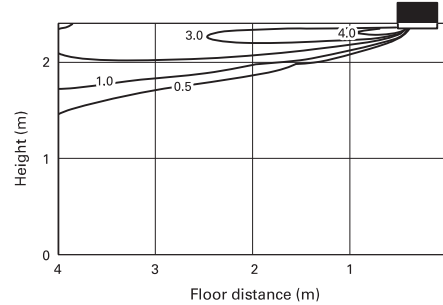
Up and Down **Left and Right**

*Only available when Econo Cool is set.

Horizontal Airflow KY KP

The new airflow control completely eliminates that uncomfortable drafty-feeling with the introduction of a horizontal airflow that spreads across the ceiling. The ideal airflow for offices and restaurants.

[Horizontal Airflow]
Model name: MLZ-KP35VF
Ceiling height: 2.4m
Model: Cooling



Weekly Timer KY KP Built-in Weekly Timer Function

Easily set desired temperatures and operation ON/OFF times to match lifestyle patterns. Reduce wasted energy consumption by using the timer to prevent forgetting to turn off the unit and eliminate temperature setting adjustments.

Example Operation Pattern (Winter/Heating mode)

	Mon.	Tues.	Wed.	Thurs.	Fri.	Sat.	Sun.
6:00	ON 20°C	ON 20°C	ON 20°C	ON 20°C	ON 20°C	ON 20°C	ON 20°C
8:00	Automatically changes to high-power operation at wake-up time						
10:00	OFF	OFF	OFF	OFF	OFF	ON 18°C	ON 18°C
12:00	Automatically turned off during work hours					Midday is warmer, so the temperature is set lower	
14:00							
16:00							
18:00	ON 22°C	ON 22°C	ON 22°C	ON 22°C	ON 22°C	ON 22°C	ON 22°C
20:00	Automatically turns on, synchronized with arrival at home					Automatically raises temperature setting to match time when outside-air temperature is low	
22:00							
(during sleeping hours)	ON 18°C	ON 18°C	ON 18°C	ON 18°C	ON 18°C	ON 10°C	ON 10°C
	Automatically lowers temperature at bedtime for energy-saving operation at night						

Settings

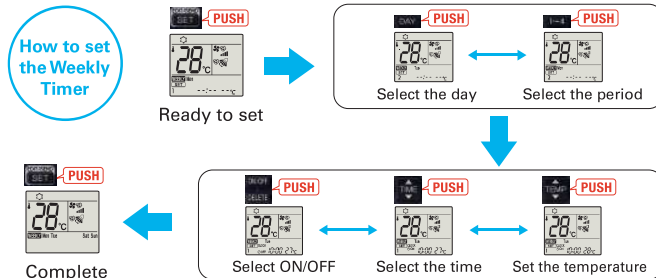
Pattern Settings: Input up to four settings for each day

Settings: •Start/Stop operation •Temperature setting *The operation mode cannot be set.

Easy set-up using dedicated buttons



The remote controller is equipped with buttons that are used exclusively for setting the Weekly Timer. Setting operation patterns is easy and quick.

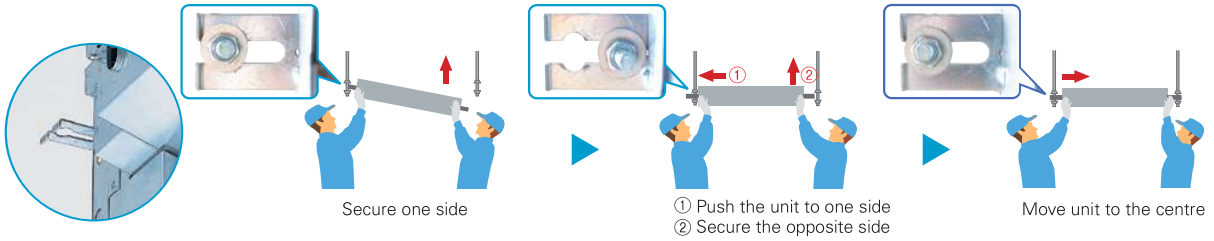


- Start by pushing the "SET" button and follow the instructions to set the desired patterns. Once all of the desired patterns are input, point the top end of the remote controller at the indoor unit and push the "SET" button one more time. (Push the "SET" button only after inputting all of the desired patterns into the remote controller memory. Pushing the "CANCEL" button will end the set-up process without sending the operation patterns to the indoor unit.)
- It takes a few seconds to transmit the Weekly Timer operation patterns to the indoor unit. Please continue to point the remote controller at the indoor unit until all data has been sent.

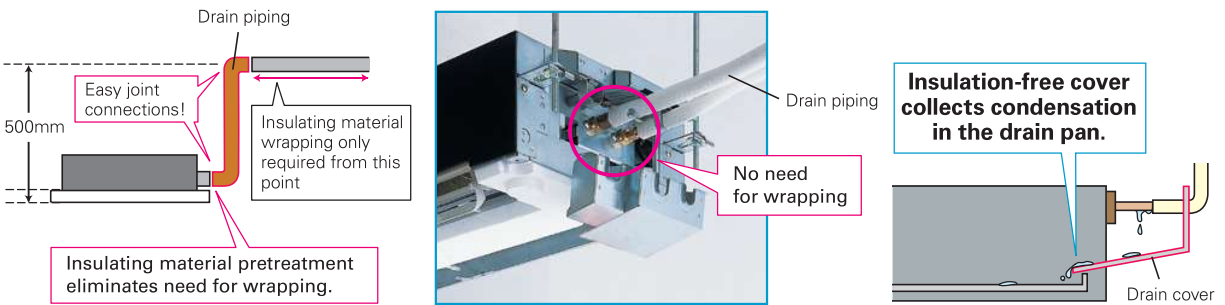
Easy Installation

Temporary hanging hook KY KP

Work efficiency has improved during installation.



Refrigerant Piping Supporters + Drain Cover KY KP



High Serviceability KY KP

No need to put off the panel even when the unit has some troubles to be checked inside. Simply open the panel to see the inside of the unit.



Wi-Fi Space

There is space inside the panel for a Wi-Fi interface.

* This image is for MLZ-KY

MLZ SERIES



Indoor Unit **R32**



MLZ-KP25/35/50VF



Indoor Unit **R32**



MLZ-KY20VG

Panel

MLP-444W

MLP-448W

Outdoor Unit



SUZ-M25/35VA



SUZ-M50VA

For Multi Connection Only

Remote Controller



Built in
MLZ-KP/KY



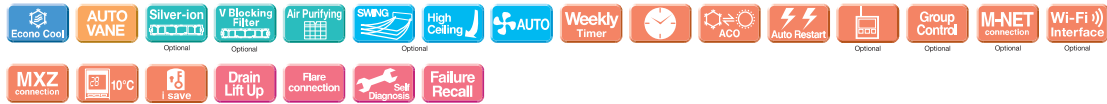
*optional



*optional



*optional



Type	Inverter Heat Pump						
Indoor Unit	MLZ-KY20VG	MLZ-KP25VF	MLZ-KP35VF	MLZ-KP50VF			
Outdoor Unit	For Multi connection only						
Refrigerant	R32 ⁽¹⁾						
Power Supply	Outdoor Power supply 230 / Single / 50						
Cooling	Design load	kW	2.5	3.5	5.0		
	Annual electricity consumption ⁽²⁾	kWh/a	141	175	260		
	SEER ^{(3),(4)}		6.2	7.0	6.7		
	Energy efficiency class		A ⁺	A ⁺⁺	A ⁺⁺		
	Capacity						
Heating (Average Season)	Design load	kW	2.2	2.6	4.3		
	Declared Capacity	at reference design temperature at bivalent temperature at operation limit temperature	kW	2.0 (-10°C) 2.0 (-7°C) 2.0 (-10°C)	2.3 (-10°C) 2.3 (-7°C) 2.3 (-10°C)	3.8 (-10°C) 3.8 (-7°C) 3.8 (-10°C)	
	Back up heating capacity	kW	0.2	0.3	0.5		
	Annual electricity consumption ⁽²⁾	kWh/a	697	791	1397		
	SCOP ^{(3),(4)}		4.4	4.6	4.3		
Indoor Unit	Input	kW	0.012	0.04	0.04		
	Operating Current(Max)	A	0.12	0.40	0.40		
	Dimensions	H*W*D	mm	194-842-301	185-1102-360	185-1102-360	
	Weight	kg	14	15.5	15.5		
	Air Volume (SLo-Mid-Hi ⁽⁵⁾)	Cooling Heating	m ³ /min	4.3-4.7-5.2-5.6 4.3-4.9-5.5-6.0	6.0-7.2-8.0-8.8 6.0-7.0-8.2-9.2	6.0-7.3-8.4-9.4 6.0-7.7-8.8-9.9	6.0-8.3-9.8-11.4 6.0-8.8-10.3-11.8
Panel	Sound Level (SPL) (SLo-Mid-Hi ⁽⁵⁾)	Cooling Heating	dB(A)	30-32-34-37 29-32-35-58	27-31-34-38 29-27-34-37	27-32-36-40 26-32-36-40	29-36-41-47 26-37-42-48
	Sound Level (PWL)	Cooling	dB(A)	40-42-44-50	52	53	59
	Dimensions	H*W*D	mm	34-915-370	24-1200-424	24-1200-424	24-1200-424
	Weight	kg	3.8	3.5	3.5	41	
	Dimensions	H*W*D	mm	—	550-800-285	550-800-285	714-800-285
Outdoor Unit	Weight	kg	30	35	41		
	Air Volume	Cooling Heating	m ³ /min	— 34.6	36.3 34.6	34.3 32.7	45.8 43.7
	Sound Level (SPL)	Cooling Heating	dB(A)	— 46	45 46	48 48	48 49
	Sound Level (PWL)	Cooling	dB(A)	—	59	59	64
	Operating Current (Max)	A	—	6.8	8.5	13.5	
Ext. Piping	Breaker Size	A	—	10	10	20	
	Diameter	Liquid/Gas	mm	6.35/9.52	6.35/9.52	6.35/12.7	
	Max.Length	Out-In	m	—	20	20	
Guaranteed Operating Range (Outdoor)	Max.Height	Out-In	m	—	12	30	
	Cooling	°C	—	-10~+46	-10~+46	-15~+46	
Heating	°C	—	-10~+24	-10~+24	-10~+24		