

MLZ SERIES

Introducing a new type of ceiling cassette for the Multi-Split Series with streamlined interior dimensions and a sharp, sleek appearance.

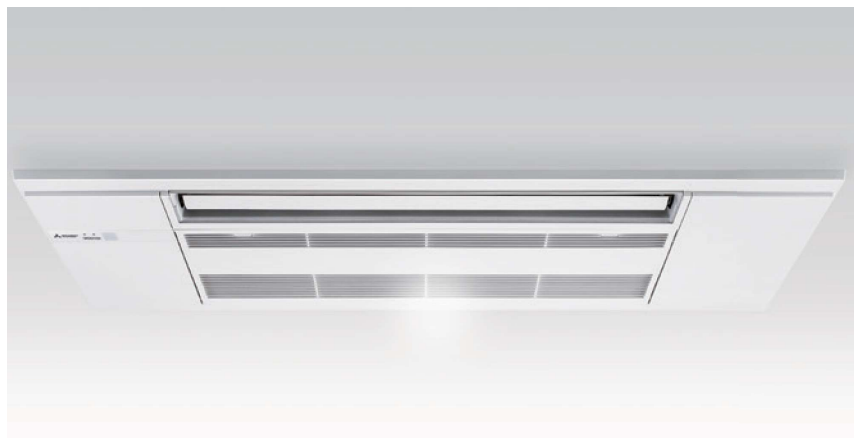
R32
R410A
Multi

MLZ-KP25/35/50VF



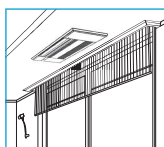
Slim Design

Industry leading slim body realized a simple design with linear beauty.



Ceiling Mounted

Installing the ceiling-mounted MLZ Series unit in a room creates a more spacious feel that enhances room comfort. This overhead format is also an excellent solution when lighting equipment is installed at the centre of the room and fixtures such as book shelves are mounted on wall surfaces.



Slim Body

The new units are designed with a slim body (only 185mm high), ensuring easy installation even when low ceiling cavities limit installation space. The need for ceiling cavity service space is also eliminated, further reducing the dimensions required for installation.



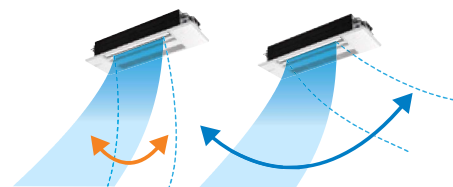
Set Airflow According to Ceiling Height

Dual-level airflow selection is engineered to accommodate specific ceiling heights. This is a key feature for adjusting airflow effectively when it is either too strong or too weak due to being mismatched with the height of the ceiling.

	25	35	50
Standard	2.4m	2.4m	2.4m
High ceiling	2.7m	2.7m	2.7m

Auto Vane Control

Outlet vanes can be moved left and right, and up and down using the remote controller. This improved airflow control feature solves the problem of drafts.

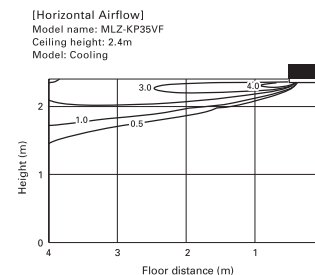


Up and Down **Left and Right**

*Only available when Econo Cool is set.

Horizontal Airflow

The new airflow control completely eliminates that uncomfortable drafty-feeling with the introduction of a horizontal airflow that spreads across the ceiling. The ideal airflow for offices and restaurants.



Built-in Weekly Timer Function

Easily set desired temperatures and operation ON/OFF times to match lifestyle patterns. Reduce wasted energy consumption by using the timer to prevent forgetting to turn off the unit and eliminate temperature setting adjustments.

Example Operation Pattern (Winter/Heating mode)

	Mon.	Tues.	Wed.	Thurs.	Fri.	Sat.	Sun.
6:00	ON 20°C	ON 20°C	ON 20°C	ON 20°C	ON 20°C	ON 20°C	ON 20°C
8:00	Automatically changes to high-power operation at wake-up time						
10:00	OFF	OFF	OFF	OFF	OFF	ON 18°C	ON 18°C
12:00	Automatically turned off during work hours					Midday is warmer, so the temperature is set lower	
14:00							
16:00							
18:00	ON 22°C	ON 22°C	ON 22°C	ON 22°C	ON 22°C	ON 22°C	ON 22°C
20:00	Automatically turns on, synchronized with arrival at home					Automatically raises temperature setting to match time when outside-air temperature is low	
22:00							
(during sleeping hours)	ON 18°C	ON 18°C	ON 18°C	ON 18°C	ON 18°C	ON 10°C	ON 10°C
	Automatically lowers temperature at bedtime for energy-saving operation at night						

Settings

Pattern Settings: Input up to four settings for each day

Settings: •Start/Stop operation •Temperature setting *The operation mode cannot be set.

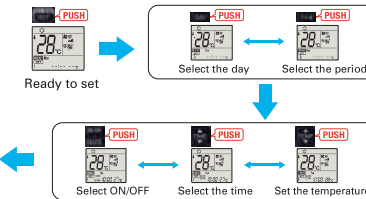
Easy set-up using dedicated buttons



The remote controller is equipped with buttons that are used exclusively for setting the Weekly Timer. Setting operation patterns is easy and quick.



How to set the Weekly Timer



- Start by pushing the "SET" button and follow the instructions to set the desired patterns. Once all of the desired patterns are input, point the top end of the remote controller at the indoor unit and push the "SET" button one more time. (Push the "SET" button only after inputting all of the desired patterns into the remote controller memory. Pushing the "CANCEL" button will end the set-up process without sending the operation patterns to the indoor unit.
- It takes a few seconds to transmit the Weekly Timer operation patterns to the indoor unit. Please continue to point the remote controller at the indoor unit until all data has been sent.

Easy Installation

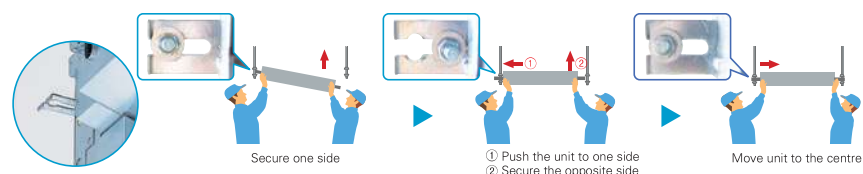
Industry leading Slim Body

Innovative size which enables to fold the refrigerant piping above the unit.

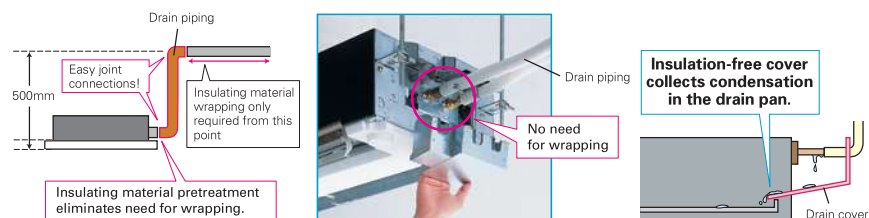


Temporary hanging hook

Work efficiency has improved during installation.

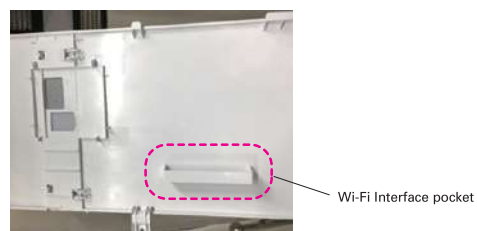


Drain Piping Supporters + Drain Cover



Wi-Fi Interface Installation (Optional)

The indoor unit panel is equipped with a Wi-Fi Interface pocket, contributing to the beautiful appearance, easy installation, and maintenance.



MLZ-KP SERIES

Indoor Unit R32

MLZ-KP25/35/50VF

Panel

MLP-444W

Outdoor Unit

SUZ-M25/35VA

SUZ-M50VA

Remote Controller

Enclosed in MLZ-KP

*optional

Good Design Award 2017

Round Cool

AUTO VANE

Silver-look

UV Blocking Filter

Air Purifying

PM2.5

High Ceiling

4-AUTO

Weekly timer

ECO

Auto Restart

Smart

Group Control

M-NET

Wi-Fi (i) Interface

MXZ connection

10°C

Drain Lift Up

Flare connection

Disposal

Failure Recall

Type	MLZ-KP25VF	MLZ-KP35VF	MLZ-KP50VF
Indoor Unit	MLZ-KP25VF	MLZ-KP35VF	MLZ-KP50VF
Outdoor Unit	SUZ-M25VA	SUZ-M35VA	SUZ-M50VA
Refrigerant	R32 ⁽¹⁾		
Power Supply	Outdoor Power supply 230V / Single / 50Hz		
Cooling	Design load	2.5	5.0
	Annual electricity consumption ⁽²⁾	141	200
	SEER ⁽³⁾	6.2	6.7
	Energy efficiency class	A++	A++
	Capacity	2.5	5.0
	Rated	1.4 - 3.2	1.7 - 5.6
	Total Input	0.59	1.38
	Design load	2.2	4.3
	Declared Capacity	2.0 (+10°C)	3.8 (+10°C)
	at reference design temperature	2.0 (+10°C)	3.8 (+10°C)
Heating (Average Season)	Design load	2.2	4.3
	Annual electricity consumption ⁽²⁾	697	1397
	SEER ⁽³⁾	4.4	4.3
	Energy efficiency class	A+	A+
	Capacity	3.2	6.0
	Rated	1.4 - 4.2	1.7 - 7.2
	Total Input	0.80	1.86
	Design load	2.2	4.3
	Declared Capacity	2.0 (+10°C)	3.8 (+10°C)
	at reference design temperature	2.0 (+10°C)	3.8 (+10°C)
Operating	Current (Max)	7.2	13.9
	Rated	0.04	0.04
	Operating Current(Max)	0.40	0.40
	Dimensions	185-1102-360	185-1102-360
	Weight	15.5	15.5
	Air Volume	6.0-7.2-8.0-8.8	6.0-8.2-9.8-11.4
	Heating	6.0-7.0-8.2-9.2	6.0-8.8-10.3-11.8
	Sound Level (SPL)	27-31-34-38	29-36-41-47
	Sound Level (PWL)	26-27-34-37	26-37-42-48
	Dimensions	24-1200-424	24-1200-424
Panel	Weight	3.5	3.5
	Dimensions	550-800-285	550-800-285
	Weight	30	41
	Air Volume	36.3	45.8
	Heating	34.6	43.7
	Sound Level (SPL)	45	48
	Sound Level (PWL)	46	49
	Operating Current (Max)	59	69
	Breaker Size	6.5	10.5
	Dimensions	6.35/9.52	6.35/12.7
Ext. Piping	Diameter	6.35/9.52	6.35/12.7
	Max.Length	20	30
	Max.Height	12	30
	Guaranteed Operating Range (Outdoor)	-10~+46	-10~+46
	Heating	-10~+24	-10~+24
	Cooling	-10~+46	-10~+46
	Heating	-10~+24	-10~+24
	Cooling	-10~+46	-10~+46
	Heating	-10~+24	-10~+24
	Cooling	-10~+46	-10~+46

(1) Refrigerant leakage contributes to climate change. Refrigerant with lower global warming potential (GWP) would contribute less to global warming than a refrigerant with higher GWP. If leaked to the atmosphere, this appliance contains a refrigerant fluid with a GWP of 1075. This means that 1 kg of this refrigerant fluid would be leaked to the atmosphere, the impact of global warming would be 1075 times higher than 1 kg of CO₂ over a period of 100 years. Never try to interfere with the refrigerant circuit yourself or disassemble the product yourself and always ask a professional.

(2) The GWP of R410A is 2088 in the IPCC 4th Assessment Report.

(3) SEER, SCOP and other related description are based on COMMISSION DELEGATED REGULATION (EU) No 626/2011. The temperature conditions for calculating SCOP are based on "Average Season".

(4) SEER, SCOP and other related description are based on COMMISSION DELEGATED REGULATION (EU) No 626/2011. The temperature conditions for calculating SCOP are based on "Average Season".