



# Split Systems





## Changes for the Better

Mitsubishi Electric has been an integral part of Australian households for more than 45 years, providing high-quality, innovative products.

We pride ourselves on understanding Australian households and delivering products tailored to meet their needs.

MITSUBISHI ELECTRIC  
**#worksforME**



## Contents

Changes for the Better 2

Why ME 4

Why Choose a Split System 5

Technology 6

Zoned Energy Rating Labels 8

Indoor Units 10

### Wall Mounted

MSZ-LN Series 12



MSZ-EF Series 13



MSZ-AP Series 14



MSZ-AS90 15



### Floor Standing

MFZ-KW Series 16



### Ceiling Cassette

SLZ-M Series 17

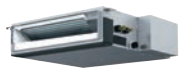


MLZ-KP Series 18



### Compact Bulkhead

SEZ-M Series 19



Control your Comfort 20



3D i-See Sensor 22

Specifications 23

# Why Choose Mitsubishi Electric?

Whether it is consistent heating or cooling for the home or office, Mitsubishi Electric offers you state-of-the-art technology in the LN and AP Series with Dual Barrier Coating that is quiet, simple to use, energy efficient, and above all, reliable.

## Quality & Reliability

When it comes to comfort, efficiency and durability, Mitsubishi Electric is distinctive, and in a very good way. We call it MEQ — Mitsubishi Electric Quality. The MEQ standard results in product tested in accordance with the Mitsubishi Electric standard, it's simply a different standard of testing. Every Mitsubishi Electric air conditioner for each production line, is placed on a testing rig and undergoes a variety of stringent tests before leaving the factory.

## Flexible Choice

Mitsubishi Electric air conditioners range from wall mounted, floor standing, ceiling concealed, ceiling cassettes to ceiling suspended units; offering end-users flexibility, with a wide range of options to satisfy most application requirements.

## After Sales Service & Spare Parts

We pride ourselves on our local after sales support, including in-house technical support and spare parts support.

## Peace of Mind

Mitsubishi Electric air conditioners deliver reliable performance year in, year out. When used in residential applications, Mitsubishi Electric air conditioners are covered by a full 5 year parts and labour warranty.





# Why Choose a Split System?

## The Benefits of Split Systems

When cooling or heating your home there are many factors to consider especially ongoing running costs, the ease of use and ultimately, your comfort. Our Split Systems are designed to cool or heat small to medium spaces whilst providing a versatile, yet affordable air conditioning solution. The Split Systems Series is quick to install and includes one of the quietest units in today's market.

## Individual Control

The advantage of Split Systems is each unit can be controlled individually. Whether you want cooling, heating, dry or to simply run the fan mode to circulate the air. The conditioned space can be accommodated efficiently or switched off if the unit is no longer needed. With a range of control options including wall mounted, handheld or Wi-Fi control there is a customisable solution for any room. The capacity to individually control each air conditioner unit may also result in savings on your electricity bill, with the ability to turn a single air conditioner unit off when it isn't required.

## Quiet Operation for Peaceful Comfort

We recognise that noise affects comfort, so we constantly work to make our air conditioners as quiet as possible. With improvements to our fan blades combined with grille shape to our outdoor unit, it's even quieter when in low noise mode. We want you to feel the comfort, not hear it.

## Ultimate Comfort and Modern Design

Mitsubishi Electric provide attractive air conditioners which range in a variety of designs to suit diversified needs; with stylish lines for the living room and quiet operation for the bedroom, our air conditioners provide advanced air control which is smart and sophisticated.

## Add Units as Your Family Grows

As your circumstances evolve, your air conditioning needs may also change. A large benefit of installing a Split System is that additional air conditioner units can easily be added in the future. For example, as working situations change you may require a study to be set up in a room that was not previously used for long periods. In contrast to a ducted system, split systems are easier and cheaper to install.

# Technology

Mitsubishi Electric Split Systems Series embodies living environment control at the touch of a button. Our units are ideal for small to medium room sizes with a wide range of units available in either wall mounted, floor standing, cassette or ducted systems.

## Outdoor Unit DC Scroll Compressor

Compressors can be described as the heart of an air conditioner, that pump the refrigerant around the system which heat or cools your home. Mitsubishi Electric utilises DC scroll compressors with the addition of a frame compliance mechanism, this technology reduces the internal friction of the compressor which increases its overall efficiency.

## Inverter Technology

While the compressor is the heart of the system, the Inverter is the brain of the system. An Inverter receives information from sensors monitoring operating conditions and adjusts the frequency of the compressor to control the refrigerant flow rate thereby consuming less current and power. Mitsubishi Electric Inverters ensures high performance and maximum comfort can be achieved while maintaining energy efficiency.

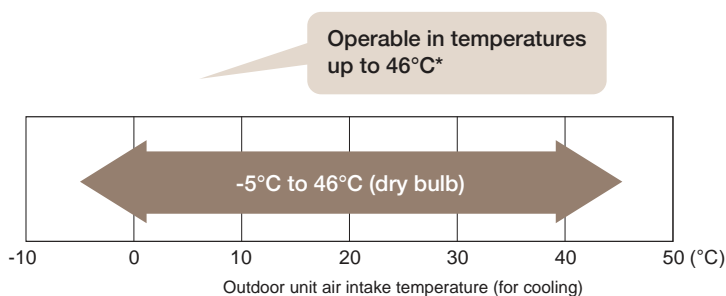
## Cleaning-Free Pipe Re-Use Technology\*

The Mitsubishi Electric clean free piping re-use technology allows the re-use of existing refrigerant pipe which may reduce the installation costs by eliminating the need to replace existing pipework. The system is fitted with a 'wide strainer' which captures iron particles and prevent them from entering the outdoor unit.

\*Please contact your local dealer for details.

## Guaranteed Operating Range

With the harsh Australian environment it is comforting to know your air conditioner will continue to operate with a guaranteed operating range of -5°C to 46°C\*. This means your air conditioner will continue to operate when you need it most.



## Demand Response Capable\*

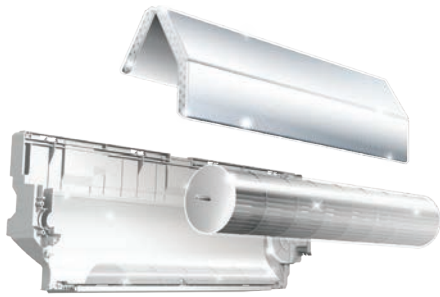
Our SUZ-M, MUZ-AP25-80 and MUZ-AS90 outdoor units include a demand response enabling device (DRED), allowing your electricity provider to activate and control the system at 3 preprogrammed modes, in response to signals sent from the electricity provider at times when it is necessary to help reduce peak demand.

\*This requires an additional adapter from your power provider and is installed in accordance with AS/NZS 4755.3.1:2014.

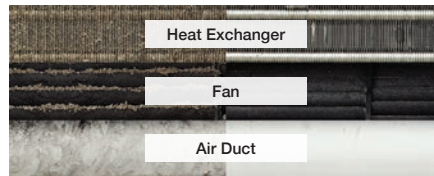
## Dual Barrier Coating\*

Dual Barrier Coating reduces dust and greasy dirt from collecting in the air conditioner. Dirt is generally classified into two groups: hydrophilic dirt such as fiber dust and sand dust and hydrophobic dirt such as oil and cigarette smoke. The Mitsubishi Electric Dual Barrier Coating works as a two-barrier coating with blended “fluorine particles” that reduce hydrophilic dirt penetration and “hydrophilic particles” that reduce hydrophobic dirt from sticking to the air conditioner. This dual coating on the inner surface helps to keep the air conditioner clean year-round.

\*AP & LN Series only.



Dual Barrier Coating is used for: Heat Exchanger, Fan and Air Duct.



Simulated Comparison of Dirt on Heat Exchanger, Fan and Air Duct

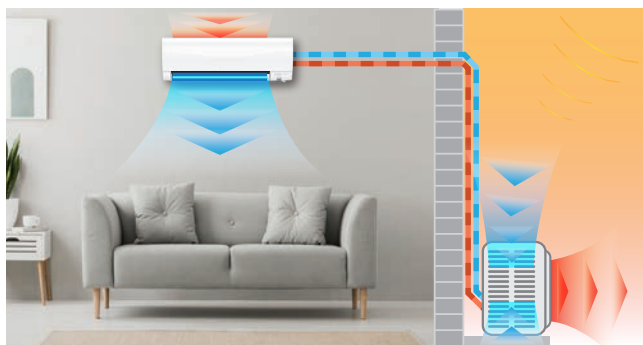


## How an Air Conditioner Works?

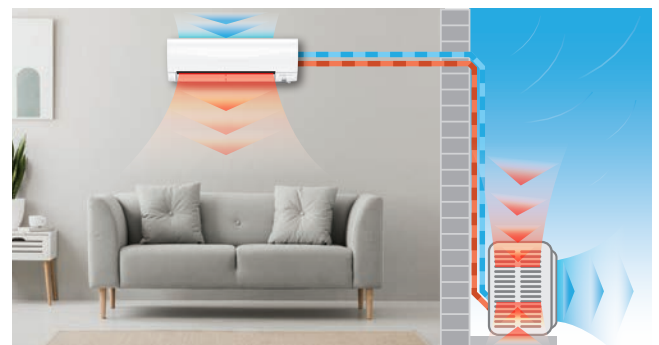
A style of air conditioning that performs both heating and cooling functions is reverse cycle air conditioning. Unlike other similar systems, reverse cycle air conditioning allows the user to use a single system to either cool down a house in the summer or warm it up in the winter.

By circulating refrigerant, this system transfers heat. Refrigerant transmits heat energy when changing from gas to liquid and back again during a physical state change. When the physical state of refrigerant is altered, heat energy is absorbed and rejected, allowing heat to be moved from one environment to another.

### Summer - Cooling



### Winter - Heating



# Zoned Energy Rating Labels

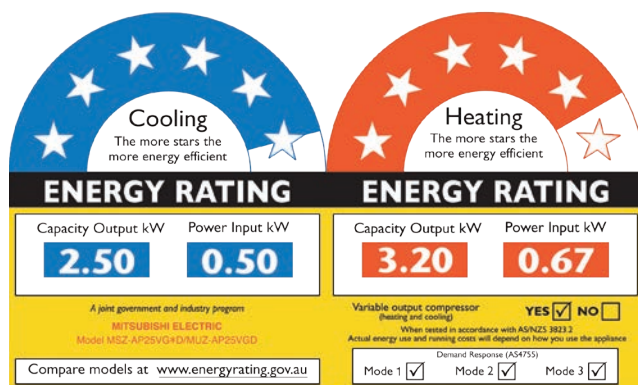
Mitsubishi Electric is in the process of changing its energy rating labels to the new Zoned Energy Rating Label (ZERL). ZERL will make it simple to select the most energy-efficient split system air conditioner for your home. The new rating system divides the continent into three separate climate zones (hot, average and cold), allowing you to quickly identify and compare air conditioners based on where you live. The more stars there are, the more efficient the air conditioner is.



## The Difference Between Old & New Labels

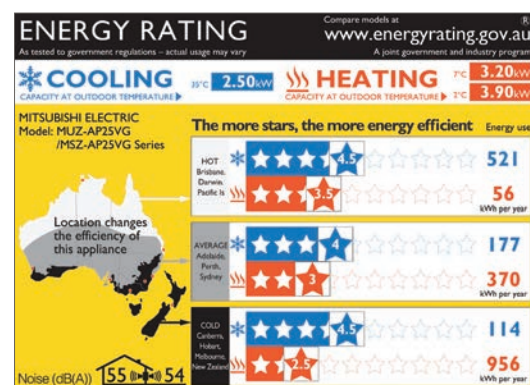
### Energy Rating Label (ERL)

The **old** Energy Rating Label displayed a star representation of how much cooling and heating capacity output in relation to the power input. This represented the efficiency of the unit at a set temperature regardless of location or environment.



### Zone Energy Rating Label (ZERL)

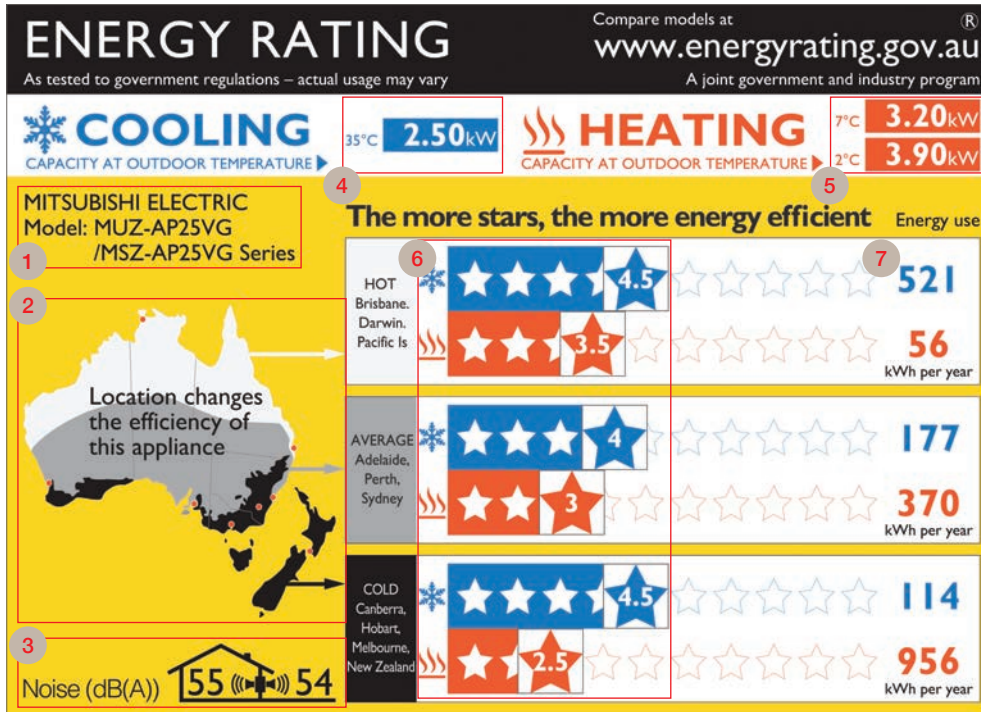
The **new** Zone Energy Rating Label reflects the performance of an air conditioner over a range of zones. These labels also have an easy to read representation of the annual electricity use of the units based on the set standards for each zone.



The old Energy Rating Label (ERL) will be replaced by the new Zoned Energy Rating Label (ZERL). The star ratings on the old label and the new Zoned Energy Rating Labels should not be compared due to the different methods of calculating the star ratings. For more information please visit [www.energyrating.gov.au/products/air-conditioners](http://www.energyrating.gov.au/products/air-conditioners).



# How to Read the New Zoned Energy Rating Label



\*1 Measured under conditions T1 (cooling) of AS/NZS 3823.1.1

\*2 The capacity is determined under conditions T1 (cooling), H1 and H2 (heating) of AS/NZS 3823.1.1

## 1 Brand & Model

Mitsubishi Electric air conditioner outdoor/indoor model numbers.

## 2 Climate Zones

Australia and New Zealand have three rating climate zones: hot, average and cold. Look at the map to determine which zone to use.

## 3 Sound Levels

The numbers represent the indoor and outdoor units' sound power levels\*1. Lower numbers indicate that the air conditioner is running more quietly.

## 4 Cooling Capacity

Cooling capacity (kW) when the indoor unit temperature is 27°C and outdoor temperature is 35°C (T1)\*2.

## 5 Heating Capacity

Heating capacity (kW) when the indoor unit temperature is 20°C and outdoor temperature is 7°C (H1) and 2°C (H2)\*2.

## 6 Star Ratings

The stars indicate how efficient the air conditioner will perform in the three separate climate zones. The more stars, the more energy efficient.  
Blue stars is cooling.  
Red stars is heating.

## 7 Energy Usage

It shows you how much energy the air conditioner uses for cooling/heating per year. The lower the kW/h used, the less expensive it is to run.

# Indoor Units

## MSZ-LN Series

- ✔ Built-In Wi-Fi
- ✔ Dual Split Vane Technology
- ✔ 3D i-See Sensor
- ✔ Plasma Quadcore Filter
- ✔ Quiet 19dB Noise Level (LN25)

2.2kW	2.5kW	3.5kW	4.2kW	5.0kW	6.0kW	7.1kW	8.0kW
-	✔	✔	-	✔	✔	-	-



## MSZ-EF Series

- ✔ Built-In Weekly Timer
- ✔ Nano Platinum Filter
- ✔ Wi-Fi Control\*
- ✔ Quiet 21dB Noise Level in 'Quiet Mode' (EF25/35)
- ✔ Appealing design matches any room décor

2.5kW	3.5kW	4.2kW	5.0kW	6.0kW	7.1kW	8.0kW
✔	✔	✔	✔	-	-	-



## MSZ-AP Series

- ✔ Dual Barrier Coating
- ✔ Vertical & Horizontal Vanes
- ✔ Wi-Fi Control\*
- ✔ Quiet 18dB Noise Level (AP25 in heating mode)
- ✔ Anti-Allergy Enzyme Filter (Optional)

2.0kW	2.5kW	3.5kW	4.2kW	5.0kW	6.0kW	7.1kW	7.8kW
✔	✔	✔	✔	✔	✔	✔	✔



## MSZ-AS90

- ✔ Dual Barrier Coating
- ✔ Vertical & Horizontal Vanes
- ✔ Wi-Fi Control\*
- ✔ Long Operation
- ✔ Anti-Allergy Enzyme Filter (Optional)

2.0kW	2.5kW	3.5kW	4.2kW	5.0kW	6.0kW	7.1kW	9.0kW
-	-	-	-	-	-	-	✔

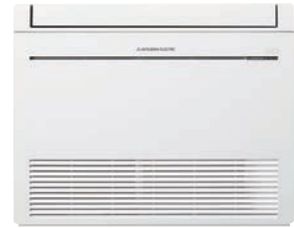


\*Optional Wi-Fi adapter required per unit.

## MFZ-KW Series

- ✔ Simple & Flat Design
- ✔ Nano Platinum Filter
- ✔ Wi-Fi Control\*
- ✔ Multi-Flow Vane (Optimum Air Distribution)
- ✔ Built-In Weekly Timer
- ✔ Built-In Installation Capability

2.2kW	2.5kW	3.5kW	4.2kW	5.0kW	6.0kW	7.1kW	8.0kW
-	✔	✔	✔	✔	✔	-	-



## SLZ-M Series

- ✔ Outside-Air Intake
- ✔ Unit height of only 235mm
- ✔ 3D i-See Sensor (Optional)
- ✔ Compact 2ft x 2ft size for ceiling installation
- ✔ Wi-Fi Control\*

2.2kW	2.5kW	3.5kW	4.2kW	5.0kW	6.0kW	7.1kW	8.0kW
-	✔	✔	-	✔	✔	-	-



## MLZ-KP Series

- ✔ Slim Body
- ✔ Horizontal Airflow
- ✔ Auto Vane Control
- ✔ Multi-Flow Vane (Optimum Air Distribution)
- ✔ Wi-Fi Control\*
- ✔ Built-In Weekly Timer

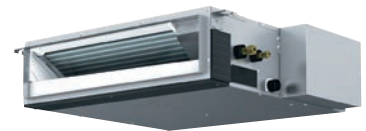
2.2kW	2.5kW	3.5kW	4.2kW	5.0kW	6.0kW	7.1kW	8.0kW
-	✔	✔	-	✔	-	-	-



## SEZ-M Series

- ✔ Compact Design
- ✔ Wi-Fi Control\*
- ✔ Unit height of only 200mm
- ✔ Three fan speeds and four static pressure levels

2.2kW	2.5kW	3.5kW	4.2kW	5.0kW	6.0kW	7.1kW	8.0kW
-	✔	✔	-	✔	✔	✔	-



\*Optional Wi-Fi adapter required per unit.

# Indoor Units



## LN Series

- Capacity Range: 2.5/3.5/5.0/6.1kW
- Unit Dimensions (mm): 890 (W) x 233 (D) x 307 (H)
- Colour: Pearl White, Ruby Red and Onyx Black
- 3D i-See Sensor
- Vertical & Horizontal Swing
- Direct/Indirect Airflow

The LN Series is a wall mounted system that blends energy efficiency with a sleek and ultra modern design. The stylish design is available with a range of deep, rich colours like pearl white, ruby red and onyx black, resulting in a premium quality feel.

### Plasma Quad Plus Filter

An advanced, multi-stage filter system designed to effectively reduce common allergens and bacteria and the influenza virus ensuring the circulation of fresh, clean air back into the room.\*1

### Dual Split Vane Technology

The unique dual split vane design allows airflow to be customised to suit different areas of the room, by independently directing air up, down, left and right.

### Built-In Wi-Fi\*2 Control

Unlock the door to smarter heating and cooling, for total home comfort. View and control your air conditioner from anywhere in the world, set up schedules and get true two-way feedback.

\*1 Testing Standard JEM1467:2015.

\*2 Requires an internet connection and the App downloaded on your smartphone or tablet with the latest operation system available.





## EF Series

- Capacity Range: 2.5/3.5/4.2/5.0kW
- Unit Dimensions (mm): 895 (W) x 195 (D) x 299 (H)
- Colour: Natural White, Matte Silver and Glossy Black

Mitsubishi Electric introduces the R32 MSZ-EF Series, expanding our line-up in the low Global Warming Potential (GWP) refrigerant. With just one third of the GWP of the R410A we aim to help reduce the household carbon footprint. The streamlined wall mounted indoor units have contemporary clean lines, expressing sophistication and quality, in a modern design and is available in 3 stylish colours.

---

### Quiet Operation

The “Quiet” fan speed setting ensures super quiet operation below 21dB\*<sup>1</sup>. Perfect for the bedroom; it’s so quiet you’ll check to see if it’s on.

### Nano Platinum Filter

The Nano Platinum Deodorising Filter reduces airborne bacteria while improving air quality. The optional Electro Static Anti-Allergy Enzyme Filter assists in the reduction of common allergens.\*<sup>2</sup>

\*1 Models MSZ-EF25/35 only.

\*2 Testing Standard JIS L1902.



## AP Series

- Capacity Range: 2.0/2.5/3.5/4.2/5.0/6.0/7.1/7.8
- Unit Dimensions (mm):  
760 (W) x 178 (D) x 250 (H) (AP20)  
798 (W) x 219 (D) x 299 (H) (AP25-50)  
1,000 (W) x 257 (D) x 325 (H) (AP60-80)
- Colour: Natural White
- 7 vane and 7 louver selectable from the remote\*<sup>1</sup>

The MSZ-AP Series is engineered for high performance and lower operating noise levels. It also features a streamlined design to blend in with decor.

### Quiet Operation

A 'Quiet Mode' setting has been added to the fan speed settings, ensuring super quiet operation below 18dB\*<sup>2</sup>. Perfect for the bedroom; it's so quiet you'll check to see if it's on.

### Vertical & Horizontal Vanes\*<sup>1</sup>

Vertical and horizontal vanes are double the size of the previous model, allowing the airflow direction to be adjusted and improving airflow control effectively. These functions can be activated at the touch of a button on your remote controller.

### Dual Barrier Coating

The MSZ-AP Series has an advanced Dual Barrier Coating on its heat exchanger and facial surfaces that reduces dust and greasy dirt from adhering to it. This not only helps the unit stay cleaner for longer but also makes cleaning the unit easier. The image shows a simulated comparison of dirt over 10 years, with and without Dual Barrier Coating.



Without

With

\*1 Excludes MSZ-AP20.

\*2 Model MSZ-AP25 in heating mode only.





## AS90

- Capacity Range: 9.0kW
- Unit Dimensions (mm):  
1,170 (W) x 295 (D) x 365 (H)
- Colour: Natural White
- 7 vane and 7 louver selectable from the remote

With features such as advanced air filtration, Dual Barrier Coating and long operation, the MSZ-AS90VGD-A1 is perfect for large open domestic living areas.

---

### Wi-Fi Control\*

Unlock the door to smarter heating and cooling systems, for total home comfort. This innovative technology connects your Mitsubishi Electric air conditioner to your smartphone, tablet or online account, giving you the freedom to fully control each unit on-the-go via an internet connection from anywhere in the world.

### Advanced Air Filtration

The built-in Anti-Allergy Enzyme Filter works to trap allergens such as mould and bacteria by using enzymes retained in the filter to decompose them.

### Night Mode

Night mode is a selectable function via the remote controller that is designed to increase comfort at night. This is achieved by reducing the LED brightness on the indoor unit, disabling the alert beeps and reducing the outdoor units operational noise levels by up to 3dB.

\*Optional Wi-Fi adapter required per unit.  
Requires an internet connection and the App downloaded on your smartphone or tablet with the latest operating system available.





## MFZ-KW Series

### Floor Standing Unit

- Capacity Range: 2.5/3.5/4.2/5.0/6.0kW
- Unit Dimensions (mm): 750 (W) x 215 (D) x 600 (H)
- Colour: Pure White
- Quiet Operation (models 25/35)
- 19dB Heating (models 25/35)

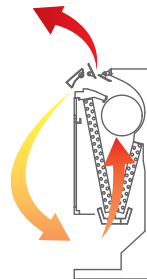
With their slimline design, our floor consoles are a great renovation option, fitting neatly into cavities of renovated fireplaces or heaters. The auto swing vane provides a more natural and comfortable airflow throughout the room.

### Slim, Sophisticated Design

A contemporary slimline design that can be recessed into your wall to significantly reduce the indoor unit's depth from 215mm to 145mm - a 33% decrease. Also features a removable base, it is the ideal solution to provide compact, unobtrusive installation.

### Rapid Heating Technology

KW Series ensures the perfect room temperature is reached faster with Rapid Heating Technology. Warm air is blown out in a downward direction and then sucked back into the unit to quickly raise the temperature of the air being blown out.



### Multi Flow Vane

A powerful blower provides improved distribution of air from the upper and lower air outlets. The result is a comfortable environment with an even temperature throughout the room. Three uniquely shaped vanes control the airflow and allow the freedom to customise comfort according to preferences.







## SLZ-M Series

### Ceiling Compact Cassette

- Capacity Range: 2.5/3.5/5.0/6.0kW
- Unit Dimensions (mm): 570 (W) x 570 (D) x 245 (H)
- Colour: Pure White
- Multiple Vane Settings

Compact and quiet, our range of ceiling cassette systems are equipped with 4-way airflow control. They offer you the flexibility to keep your wall and floor space free without compromising on comfort. Comes with built-in drain pump.

---

### Compact Design

A design that is a perfect match for ceilings made using 2ft x 2ft construction. The 4-way air outlet can provide improved comfort with evenly distributed airflow.

### Air Cleaning Filter

This built-in filter reduces dust and other particulates, keeping the air purified and deodorised. With simple maintenance, the long-life filter in the SLZ Series air conditioners can be used for approximately 2,500 hours.

### **3D i-see Sensor**

#### Detects Occupants (Optional)

3D i-See Sensor detects the occupancy of people in the room and sets the air conditioning settings accordingly. This makes automatic power-saving operation possible in high traffic areas/places. Additionally, when the area is continuously unoccupied, the system switches to an enhanced power-saving mode.



## MLZ-KP Series

### Ceiling Cassette

- Capacity Range: 2.5/3.5/5.0kW
- Unit Dimensions (mm):  
1,102 (W) x 360 (D) x 185 (H)
- Colour: Natural White
- Anti-Allergy Enzyme Filter (Optional)

The MLZ-KP Series features a sharp, slim and sleek appearance. Comes with built-in drain pump.

---

### Sleek, Slimline Design

At just 185mm in height, the MLZ Series is the perfect solution for low ceiling cavities, whilst the flat, natural white finish provides a sleek and discreet installation.

### Auto Vane Control

Outlet vanes can be moved left and right, and up and down using the remote controller. This improved airflow control feature reduces drafts.

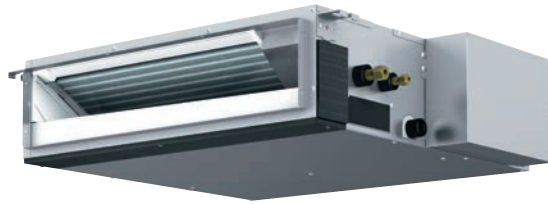
### Set Airflow According to Ceiling Height

Dual-level airflow selection is engineered to accommodate specific ceiling heights. This is a key feature for adjusting airflow effectively when ceilings are of different heights.

### Horizontal Airflow

The airflow control reduces that uncomfortable drafty feeling with the introduction of a horizontal airflow that distributes across the ceiling.





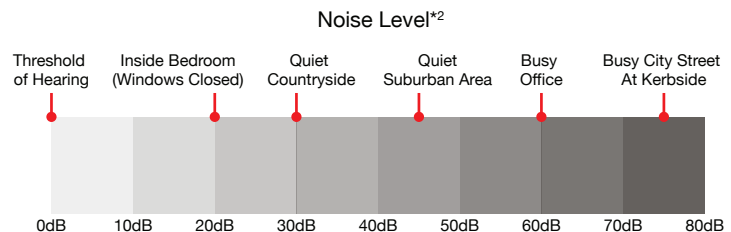
## SEZ-M Series

### Bulkhead

- Capacity Range: 2.5/3.5/5.0/6.0/7.1kW
- Unit Height: 200mm
- External Static Pressure: 5/15/35/50Pa
- Designed for homes, offices, restaurants and shops

### Impressively Quiet

With the sound of rustling leaves measuring at 20dB, the Mitsubishi Electric SEZ-M Series (25/35 models) offers impressively quiet operation at a hushed 23dB\*<sup>1</sup>; ensuring a calm and comfortable environment.



\*1 The sound level for SEZ - is measured in an anechoic chamber.

\*2 Source: NSW EPA.

### DC Fan Motor

Efficiency of the DC motor is much higher than an equivalent AC motor. The closed type design conceals the electrical windings which increases safety.

### Discreet Design

The Mitsubishi Electric compact design requires minimal space with a height of only 200mm, ideal for installation in buildings with lower ceilings. The design allows for discreet installation with the air intake and outlet grilles visible maintaining your home or office with clean lines for interior décor.

# Control your Comfort

Making the most out of your air conditioner all starts with the controls, helping you to create comfort levels that suit your needs. The availability of a wide variety of controls by Mitsubishi Electric Australia, not only provides you with a selection to personalise your air conditioning system, but also increases flexibility in the way you use your unit.

**Wi-Fi**  
**CONTROL**



## Wi-Fi Control<sup>\*1</sup>

Unlock the door to smarter heating and cooling systems through your Split and Ducted systems, for total home comfort. This innovative technology connects your Mitsubishi Electric air conditioner to your smartphone, tablet or online account, giving you the freedom to fully control each unit on-the-go via an internet connection from anywhere in the world.

### Features:

- Adjusting set temperature
- Changing mode
- Fan speed
- Auto-Off
- Zone Control

## Voice Control

Mitsubishi Electric air conditioning systems connected with Wi-Fi Control<sup>\*1</sup> are now Amazon Alexa<sup>\*2</sup> and Google Assistant<sup>\*3</sup> enabled. This means you can enjoy hands-free control.

<sup>\*1</sup> Optional Wi-Fi adapter required per unit (excludes LN Series).

Requires an internet connection and the App downloaded on your smartphone or tablet with the latest operation system available.

<sup>\*2</sup> To use Amazon Alexa to control your air conditioner you will need an Amazon Alexa Echo device.

<sup>\*3</sup> To use Google Assistant to control your air conditioner you will need a Google Home Smart speaker.

## Develop Operating Rules

Tailor your system to always meet your needs and unlock the full potential of your air conditioner. Program your system to automatically turn On/Off at specific times, change settings, and develop temperature rules to ensure superior comfort day after day.

## Control Multiple Units

Customise the settings of each air conditioner in your home. Purchase multiple adaptors to manage all air conditioners independently on the same account, to ensure complete control over your system. The result is a tailored system to your needs.





PAR-CT01MAA-PB

## Bluetooth\* Touch Screen Controller

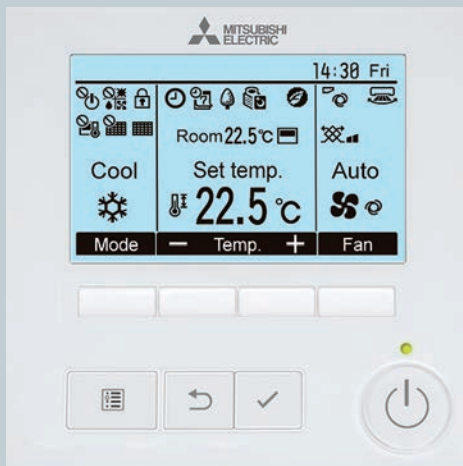
PAR-CT01MAA-S/SB/PB

A full colour 3.5" touch LCD display suitable for both residential and commercial applications. Remote controller can communicate with smartphone or tablet device via Bluetooth Low Energy (BLE).

### Features:

- Logo/photo image customisation
- White or Premium Black finishes
- 180 colour patterns available
- Customisable display
- Multilingual support: The smartphone app can be displayed in the language that the user's smartphone is set to

\*Available for PAR-CT01MAA-SB and PAR-CT01MAA-PB.



PAR-40MAA

## 7 Day Wired Controller

PAR-40MAA

A large easy to read display with backlit LCD.

### Features:

- Weekly timer – 8 patterns up to 7 days
- Auto-Off timer
- Temperature range restriction – Limit minimum and maximum to prevent over heating/cooling
- Operation lock
- Multi Language (EN/FR/DE/ES/IT/PT/SV/RU)



PAR-SL97A-E PAR-SL100A-E

## Handheld Controllers

PAR-SL97A-E | PAR-SL100A-E

With an easy to read display and a variety of operating modes at the touch of a button. This controller features a weekly and 24 hour timer, On/Off timer to set operating times on a daily basis. The 'i-Save' mode recalls the preset temperature.

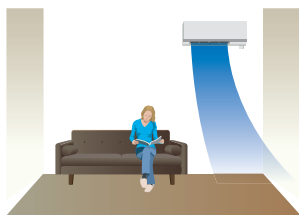
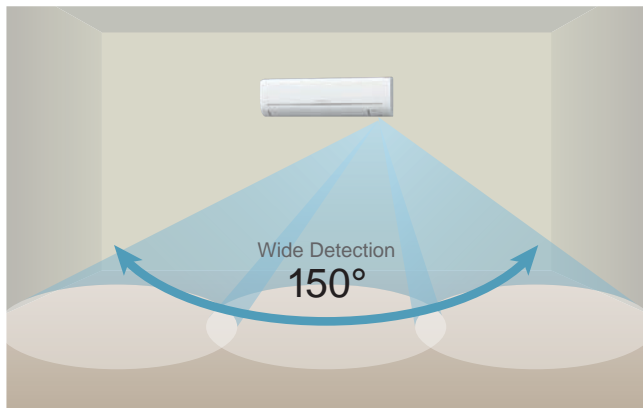
### Features:

- 24 hour timer
- Mode and fan speed selection
- i-Save mode
- 3D i-See Sensor controller (PAR-SL100A-E only)

# 3D i-see Sensor

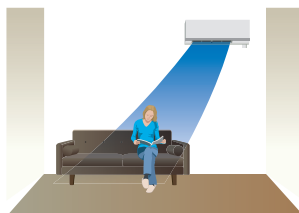
The 3D i-See Sensor is an infrared-ray sensor that measures the temperature at distant positions. While moving to the left and right, eight vertically arranged sensor elements analyse the room temperature in three dimensions.

This detailed analysis makes it possible to judge where people are in the room, thus allowing creation of features such as “indirect airflow,” to avoid airflow hitting people directly, and “direct airflow” to deliver airflow to where people are.



## Indirect Airflow

The indirect airflow setting can be used when the flow of air feels too strong or direct. For example, it can be used during cooling to avert airflow and prevent body temperature from becoming excessively cooled.

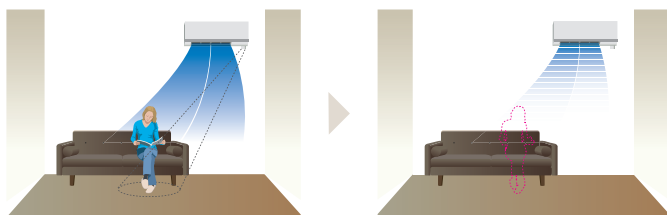


## Direct Airflow

This setting can be used to directly target airflow at people such as for immediate comfort when coming indoors on a hot (cold) day.

## Absence Detection

The sensor detects whether there are people in the room. When no-one is in the room, the unit automatically switches to energy-saving mode.



## Demand Function

With the connection of a demand response enabling device (DRED), Demand Response Mode is activated in response to signals sent from the electric power company at times when it is necessary to reduce peak demand.

## Econo Cool Energy Saving Feature

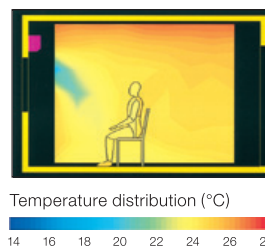
“Econo Cool” is an intelligent temperature control feature that adjusts the amount of air directed towards the body based on the air-outlet temperature. The setting temperature can be raised by as much as 2°C without any loss in comfort, thereby realising a gain in energy efficiency.

(Function only available during manual cooling operation).

	Conventional	Econo Cool
<b>Ambient Temperature</b>	35°C	35°C
<b>Set Temperature</b>	5°C	7°C
<b>Perceived Temperature</b>	30°C	29.3°C

A comfortable room environment is maintained even when setting the temperature 2°C higher than the conventional cooling mode.

### Econo Cool On



### Conventional Cooling Mode



## Area Temperature Monitor

The “3D i-See Sensor” monitors the whole room in sections and directs the airflow to areas of the room where the temperature does not match the temperature setting. For example when cooling the room, if the middle of the room is detected to be hotter, more airflow is directed towards it.

This helps to prevent unnecessary cooling/heating and contributes to energy efficiency.

### Cooling Mode



## Auto Vane

The vane closes automatically when the air conditioner is not running, concealing the air outlet and creating a flat surface that is aesthetically appealing.

# Product Specifications



MSZ-LN Series (Wall Mounted)				MSZ-LN25VG2	MSZ-LN35VG2	MSZ-LN50VG2	MSZ-LN60VG2	
Indoor Unit				MUZ-LN25VG2	MUZ-LN35VG2	MUZ-LN50VG2	MUZ-LN60VG	
Outdoor Unit				MUZ-LN25VG2	MUZ-LN35VG2	MUZ-LN50VG2	MUZ-LN60VG	
Refrigerant				R32				
Cooling	Capacity [Rated] <sup>*1,4</sup>	kW		2.50	3.50	5.00	6.10	
	Capacity [Min-Max]	kW		1.00 - 3.50	0.80 - 4.00	1.00 - 6.00	1.40 - 6.90	
	Total Input [Rated] <sup>*1,4</sup>	kW		0.49	0.82	1.38	1.73	
	Total Input [Min-Max]	kW		0.18 - 0.90	0.16 - 1.18	0.19 - 2.33	0.27 - 2.73	
	EER			5.10	4.27	3.62	3.53	
	AEER			5.07	4.25	3.61	3.52	
	ZERL <sup>*2</sup>		Hot		5.0	4.5	3.5	3.0
			Average		4.5	4.0	3.5	3.0
			Cold		5.0	4.5	3.5	3.0
	Running Current [Rated] <sup>*3,4</sup>	A		2.70	3.80	6.30	7.80	
Sound Pressure Level	In [Quiet-Lo-Mid-Hi-SHi]	dB(A)		19 - 23 - 29 - 36 - 42	19 - 24 - 29 - 36 - 43	27 - 31 - 35 - 39 - 46	29 - 37 - 41 - 45 - 49	
	Out [PWL]	dB(A)		46 (60)	49 (61)	51 (64)	55 (65)	
Air Volume (In) [Quiet-SHi]	L/S			78 - 207	78 - 217	95 - 232	118 - 262	
Heating	Capacity [Rated] <sup>*1,5</sup>	kW		3.20	4.00	6.00	6.80	
	Capacity [Min-Max]	kW		0.70 - 5.40	0.90 - 6.30	1.00 - 8.20	1.80 - 9.80	
	Total Input [Rated] <sup>*1,5</sup>	kW		0.60	0.82	1.48	1.80	
	Total Input [Min-Max]	kW		0.15 - 1.50	0.17 - 1.88	0.17 - 3.00	0.33 - 3.62	
	COP			5.33	4.88	4.05	3.78	
	ACOP			5.30	4.86	4.04	3.77	
	ZERL <sup>*2</sup>		Hot		4.0	3.5	3.0	3.0
			Average		3.5	3.5	2.5	2.5
			Cold		3.0	3.0	2.0	2.0
	Running Current [Rated] <sup>*3,5</sup>	A		3.40	3.80	6.80	7.90	
Sound Pressure Level	In [Quiet-SHi]	dB(A)		19 - 24 - 29 - 38 - 45	25 - 29 - 34 - 39 - 47	29 - 37 - 41 - 45 - 49	29 - 37 - 41 - 45 - 49	
	Out [PWL]	dB(A)		49 (61)	50 (62)	54 (66)	55 (69)	
Air Volume (In) [Quiet-SHi]	L/S			75 - 232	82 - 262	110 - 263		
Indoor Unit	Input [Rated] (Cooling/Heating)	W		20/27	23/27	29/34	40/40	
	Dimensions [HxWxD]	mm		307 × 890 × 233				
	Weight	kg		15.5		16.0		
Outdoor Unit	Dimensions [HxWxD]	mm		550 × 800 × 285	714 × 800 × 285	880 × 840 × 330		
	Weight	kg		33.0	34.0	40.0	55.0	
	Breaker Size	A		10		16		
Piping	Diameter [Liquid/Gas]	mm		ø6.35/ø9.52			ø6.35/ø12.70	
	Max. Length/Height	m		20/12		30/12	30/15	
Guaranteed Operating Range [Outdoor]	Cooling	°C		-10 ~ 46				
		Heating	°C	-15 ~ 24				

## Notes:

- \*1 Nominal conditions cooling: EAT 27°CDB/19°CWB, Ambient 35°CDB. Rated conditions cooling: EAT 24°CDB/17°CWB, Ambient 35°CDB. Nominal conditions heating: EAT 20°CDB/15°CWB, Ambient 7°CDB/6°CWB.
- \*2 Zoned Energy Rating Label - residential air conditioning star rating based on GEMS 2019 Determination.
- \*3 Rated Load Amps (RLA) is based on nominal conditions. Use Maximum Circuit Amps (MCA) for power supply infrastructure sizing, etc. Test conditions are based on AS/NZS3823.1.1.

## Rating Conditions:

- \*4 Cooling: Indoor 27°C, D.B./19°C, W.B. Outdoor 35°C, D.B./24°C, W.B.
- \*5 Heating: Indoor 20°C, D.B./15°C, W.B. Outdoor 7°C, D.B./6°C, W.B.

# Product Specifications



MSZ-EF Series (Wall Mounted)							
Indoor Unit		MSZ-EF25VG(W/B/S)	MSZ-EF35VG(W/B/S)	MSZ-EF42VG(W/B/S)	MSZ-EF50VG(W/B/S)		
Outdoor Unit		MUZ-EF25VG	MUZ-EF35VG	MUZ-EF42VG	MUZ-EF50VG		
Refrigerant		R32					
Cooling	Capacity [Rated] <sup>*1,4</sup>	kW	2.50	3.50	4.20	5.00	
	Capacity [Min-Max]	kW	0.90 - 3.40	1.10 - 4.00	0.90 - 4.60	1.40 - 5.40	
	Total Input [Rated] <sup>*1,4</sup>	kW	0.54	0.91	1.20	1.55	
	Total Input [Min-Max]	kW	0.23 - 1.15	0.21 - 1.50	0.15 - 1.93	0.30 - 1.98	
	EER		4.63	3.85	3.50	3.23	
	AEER		4.60	3.83	3.49	3.22	
	ZERL <sup>*2</sup>		Hot	4.5	3.5	3.0	
			Average	4.0	3.5	3.0	
			Cold	4.0	3.5	3.0	
	Running Current [Rated] <sup>*3,4</sup>	A	3.00	4.20	5.40	6.90	
Sound Pressure Level	In [Quiet-Lo-Mid-Hi-SHi]	dB(A)	19 - 42	21 - 42	28 - 43	30 - 43	
	Out [PWL]	dB(A)	47 (58)	49 (62)	50 (62)	52 (65)	
Air Volume (In) [Quiet-SHi]	L/S	67 - 175	67 - 175	97 - 187	97 - 188		
Capacity [Rated] <sup>*1,5</sup>	kW	3.20	4.00	5.40	5.80		
Capacity [Min-Max]	kW	1.00 - 4.20	1.30 - 5.10	1.30 - 6.30	1.40 - 7.50		
Total Input [Rated] <sup>*1,5</sup>	kW	0.70	0.95	1.45	1.56		
Total Input [Min-Max]	kW	0.23 - 1.17	0.21 - 1.33	0.26 - 2.05	0.30 - 2.64		
COP		4.57	4.21	3.71	3.72		
ACOP		4.55	4.20	3.70	3.71		
Heating	ZERL <sup>*2</sup>	Hot	3.0				
		Average	2.5				
		Cold	2.5	2.0	2.0	2.0	
	Running Current [Rated] <sup>*3,5</sup>	3, 5A	3.50	4.40	6.50	7.10	
	Sound Pressure Level	In [Quiet-SHi]	dB(A)	21 - 45	21 - 46	28 - 48	30 - 49
Out [PWL]		dB(A)	48 (61)	50 (63)	51 (64)	52 (65)	
Air Volume (In) [Quiet-SHi]	L/S	67 - 198	67 - 212	92 - 220	107 - 243		
Input [Rated] (Cooling/Heating)	W	20/26	20/30	23/33	23/43		
Indoor Unit	Dimensions [HxWxD]	mm	299 × 885 × 195				
	Weight	kg	11.5				
Outdoor Unit	Dimensions [HxWxD]	mm	550 × 800 × 285		714 × 800 × 285		
	Weight	kg	31.0	34.0	35.0	40.0	
	Breaker Size	A	10		12	16	
Piping	Diameter [Liquid/Gas]	mm	ø6.35/ø9.52				
	Max. Length/Height	m	20/12		30/15		
Guaranteed Operating Range [Outdoor]	Cooling	°C	-10 ~ 46				
	Heating	°C	-15 ~ 24				
Refrigerant Amount [Pre-Charged]	kg	0.62	0.74				

## Notes:

- \*1 Nominal conditions cooling: EAT 27°CDB/19°CWB, Ambient 35°CDB. Rated conditions cooling: EAT 24°CDB/17°CWB, Ambient 35°CDB. Nominal conditions heating: EAT 20°CDB/15°CWB, Ambient 7°CDB/6°CWB.
- \*2 Zoned Energy Rating Label - residential air conditioning star rating based on GEMS 2019 Determination.
- \*3 Rated Load Amps (RLA) is based on nominal conditions. Use Maximum Circuit Amps (MCA) for power supply infrastructure sizing, etc. Test conditions are based on AS/NZS3823.1.1.

## Rating Conditions:

- \*4 Cooling: Indoor 27°C, D.B./19°C, W.B. Outdoor 35°C, D.B./24°C, W.B.
- \*5 Heating: Indoor 20°C, D.B./15°C, W.B. Outdoor 7°C, D.B./6°C, W.B.





MSZ-AP Series (Wall Mounted)								
Indoor Unit			MSZ-AP20VG	MSZ-AP25VG(D*)	MSZ-AP35VG(D*)	MSZ-AP42VG(D*)	MSZ-AP50VG(D*)	
Outdoor Unit			MUZ-AP20VG	MUZ-AP25VG(D*)	MUZ-AP35VG(D*)	MUZ-AP42VG(D*)	MUZ-AP50VG(D*)	
Refrigerant			R32					
Cooling	Capacity [Rated] <sup>*1,4</sup>	kW	2.00	2.50	3.50	4.20	5.00	
	Capacity [Min-Max]	kW	0.60 - 2.70	1.10 - 3.60	1.10 - 4.10	0.90 - 4.80	1.40 - 6.20	
	Total Input [Rated] <sup>*1,4</sup>	kW	0.46	0.50	0.87	1.19	1.32	
	Total Input [Min-Max]	kW	0.23 - 1.16	0.21 - 0.99	0.21 - 1.18	0.15 - 1.90	0.30 - 2.23	
	EER		4.35	5.00	4.02	3.53	3.79	
	AEER		4.31	4.97	4.01	3.52	3.78	
	ZERL <sup>*2</sup>		Hot	3.5	4.5	4.0	3.5	
			Average	3.5	4.0		3.0	3.5
			Cold	3.5	4.5	4.0	3.5	
	Running Current [Rated] <sup>*3,4</sup>	A	2.60		4.10	5.30	5.90	
Sound Pressure Level	In [Quiet-Low-Mid-Hi-SHi]	dB(A)	21 - 26 - 30 - 35 - 42	19 - 24 - 31 - 38 - 44	19 - 24 - 31 - 38 - 45	26 - 29 - 35 - 40 - 46	28 - 33 - 39 - 44 - 49	
	Out [PWL]	dB(A)	47 (59)	46 (59)	50 (64)	51 (65)	54 (69)	
Air Volume (In) [Quiet-SHi]	L/S	58 - 115	82 - 205	82 - 223	90 - 223	100 - 258		
Capacity [Rated] <sup>*1,5</sup>	kW	2.50	3.20	3.70	5.40	6.00		
Capacity [Min-Max]	kW	0.50 - 3.50	1.30 - 5.00	1.30 - 5.10	1.30 - 6.00	1.40 - 8.00		
Total Input [Rated] <sup>*1,5</sup>	kW	0.60	0.67	0.81	1.43	1.62		
Total Input [Min-Max]	kW	0.25 - 1.20	0.35 - 1.40	0.35 - 1.42	0.26 - 1.90	0.30 - 3.00		
COP		4.17	4.78	4.57	3.78	3.70		
ACOP		4.14	4.75	4.55	3.77	3.70		
Heating	ZERL <sup>*2</sup>	Hot	3.0	3.5		3.0		
		Average	2.5	3.0		2.5		
		Cold	2.0	2.5		2.0		
	Running Current [Rated] <sup>*3,5</sup>	A	3.20	3.30	3.80	6.30	7.10	
	Sound Pressure Level	In [Quiet-SHi]	dB(A)	21 - 26 - 30 - 35 - 42	18 - 25 - 31 - 38 - 42	19 - 25 - 31 - 38 - 45	26 - 29 - 35 - 40 - 46	28 - 33 - 38 - 43 - 48
Out [PWL]		dB(A)	48 (61)	49 (59)	50 (64)	52 (65)	56 (69)	
Air Volume (In) [Quiet-SHi]	L/S	62 - 122	82 - 190	82 - 215	88 - 233	93 - 268		
Input [Rated] (Cooling/Heating)	W	19/19	23/19	29/26	29/33	43/43		
Indoor Unit	Dimensions [HxWxD]	mm	250 x 760 x 178	299 x 798 x 219				
	Weight	kg	8.2	10.5				
Outdoor Unit	Dimensions [HxWxD]	mm	550 x 800 x 285			714 x 800 x 285		
	Weight	kg	31.0	34.0/35.0	35.0/36.0	40.0/41.0		
	Breaker Size	A	10			16		
Piping	Diameter [Liquid/Gas]	mm	ø6.35/ø9.52			ø6.35/ø12.70		
	Max. Length/Height	m	20/12					
Guaranteed Operating Range [Outdoor]	Cooling	°C	-10 ~ 46					
	Heating	°C	-15 ~ 24					
Refrigerant Amount [Pre-Charged]	kg	0.55	0.70			1.00		

**Notes:**

- \*1 Nominal conditions cooling: EAT 27°CDB/19°CWB, Ambient 35°CDB. Rated conditions cooling: EAT 24°CDB/17°CWB, Ambient 35°CDB. Nominal conditions heating: EAT 20°CDB/15°CWB, Ambient 7°CDB/6°CWB.
- \*2 Zoned Energy Rating Label - residential air conditioning star rating based on GEMS 2019 Determination.
- \*3 Rated Load Amps (RLA) is based on nominal conditions. Use Maximum Circuit Amps (MCA) for power supply infrastructure sizing, etc.
- Test conditions are based on AS/NZS3823.1.1.

**Rating Conditions:**

- \*4 Cooling: Indoor 27°C, D.B./19°C, W.B. Outdoor 35°C, D.B./24°C, W.B.
- \*5 Heating: Indoor 20°C, D.B./15°C, W.B. Outdoor 7°C, D.B./6°C, W.B.

# Product Specifications



MSZ-AP Series (Wall Mounted)					
Indoor Unit		MSZ-AP60VG(D*)	MSZ-AP71VG(D*)	MSZ-AP80VG(D*)	
Outdoor Unit		MUZ-AP60VG(D*)	MUZ-AP71VG(D*)	MUZ-AP80VG(D*)	
Refrigerant		R32			
Cooling	Capacity [Rated] <sup>*1,4</sup>	kW	6.00	7.10	7.80
	Capacity [Min-Max]	kW	1.40 - 7.30	2.00 - 8.70	2.00 - 9.20
	Total Input [Rated] <sup>*1,4</sup>	kW	1.59	2.01	2.36
	Total Input [Min-Max]	kW	0.24 - 2.35	0.43 - 3.03	0.43 - 3.20
	EER		3.77	3.53	3.31
	AEER		3.77	3.53	3.30
	ZERL <sup>*2</sup>		Hot	3.0	
			Average	3.0	
			Cold	3.0	
	Running Current [Rated] <sup>*3,4</sup>	A	7.10	8.80	10.80
Sound Pressure Level	In [Quiet-Lo-Mid-Hi-SHi]	dB(A)	29 - 37 - 41 - 45 - 48	30 - 37 - 41 - 45 - 49	30 - 37 - 41 - 45 - 53
	Out [PWL]	dB(A)	55 (69)	56 (69)	
Air Volume (In) [Quiet-SHi]	L/S	156 - 315	160 - 310	160 - 343	
Heating	Capacity [Rated] <sup>*1,5</sup>	kW	6.80	8.00	9.00
	Capacity [Min-Max]	kW	2.00 - 8.60	2.20 - 9.90	2.20 - 11.00
	Total Input [Rated] <sup>*1,5</sup>	kW	1.67	2.09	2.55
	Total Input [Min-Max]	kW	0.30 - 2.60	0.42 - 3.25	0.42 - 3.65
	COP		4.07	3.83	3.53
	ACOP		4.06	3.82	3.53
	ZERL <sup>*2</sup>		Hot	3.0	
			Average	2.5	
			Cold	2.0	
	Running Current [Rated] <sup>*3,5</sup>	A	7.40	9.10	11.30
Sound Pressure Level	In [Quiet-SHi]	dB(A)	29 - 37 - 41 - 45 - 48	30 - 37 - 41 - 45 - 51	
	Out [PWL]	dB(A)	57 (69)	55 (69)	
Air Volume (In) [Quiet-SHi]	L/S	180 - 338	133 - 320		
Input [Rated] (Cooling/Heating)	W	45/49	42/45	55/45	
Indoor Unit	Dimensions [HxWxD]	mm	325 x 1100 x 257		
	Weight	kg	16.0	17.0	
Outdoor Unit	Dimensions [HxWxD]	mm	714 x 800 x 285	880 x 840 x 330	
	Weight	kg	40.0/41.0	55.0	
	Breaker Size	A	16	20	
Piping	Diameter [Liquid/Gas]	mm	ø6.35/ø12.70		
	Max. Length/Height	m	30/15		
Guaranteed Operating Range [Outdoor]	Cooling	°C	-10 ~ 46		
	Heating	°C	-15 ~ 24		
Refrigerant Amount [Pre-Charged]	kg		1.0	1.5	

## Notes:

- \*1 Nominal conditions cooling: EAT 27°CDB/19°CWb, Ambient 35°CDB. Rated conditions cooling: EAT 24°CDB/17°CWb, Ambient 35°CDB. Nominal conditions heating: EAT 20°CDB/15°CWb, Ambient 7°CDB/6°CWb.
- \*2 Zoned Energy Rating Label - residential air conditioning star rating based on GEMS 2019 Determination.
- \*3 Rated Load Amps (RLA) is based on nominal conditions. Use Maximum Circuit Amps (MCA) for power supply infrastructure sizing, etc. Test conditions are based on AS/NZS3823.1.1.

## Rating Conditions:

- \*4 Cooling: Indoor 27°C, D.B./19°C, W.B. Outdoor 35°C, D.B./24°C, W.B.
- \*5 Heating: Indoor 20°C, D.B./15°C, W.B. Outdoor 7°C, D.B./6°C, W.B.



<b>MSZ-AS90 (Wall Mounted)</b>				
<b>Indoor Unit</b>		<b>MSZ-AS90VGD-A1</b>		
<b>Outdoor Unit</b>		<b>MUZ-AS90VGD-A1</b>		
<b>Refrigerant</b>		R32		
<b>Cooling</b>	Capacity [Rated] <sup>*1,4</sup>	kW	9.00	
	Capacity [Min-Max]	kW	2.00 - 10.30	
	Total Input [Rated] <sup>*1,4</sup>	kW	2.78	
	Total Input [Min-Max]	kW	0.43 - 3.98	
	EER		3.24	
	AEER		3.23	
	ZERL <sup>*2</sup>		Hot	3.5
			Average	3.0
			Cold	3.5
	Running Current [Rated] <sup>*3,4</sup>	A	12.00	
Sound Pressure Level	In [Quiet-Lo-Mid-Hi-SHi]	dB(A)	30 - 36 - 42 - 48 - 54	
	Out [PWL]	dB(A)	56 (69)	
Air Volume (In) [Quiet-SHi]	L/S	168.3 - 463.3		
<b>Heating</b>	Capacity [Rated] <sup>*1,5</sup>	kW	10.30	
	Capacity [Min-Max]	kW	2.20 - 11.50	
	Total Input [Rated] <sup>*1,5</sup>	kW	2.94	
	Total Input [Min-Max]	kW	0.42 - 3.90	
	COP		3.50	
	ACOP		3.50	
	ZERL <sup>*2</sup>		Hot	3.0
			Average	2.5
			Cold	2.0
	Running Current [Rated] <sup>*3,5</sup>	A	12.60	
Sound Pressure Level	In [Quiet-SHi]	dB(A)	32 - 38 - 43 - 47 - 53	
	Out [PWL]	dB(A)	56 (69)	
Air Volume (In) [Quiet-SHi]	L/S	203.3 - 430.0		
<b>Indoor Unit</b>	Input [Rated] (Cooling/Heating)	W	88/71	
	Dimensions [HxWxD]	mm	365 x 1170 x 295	
	Weight	kg	20.0	
<b>Outdoor Unit</b>	Dimensions [HxWxD]	mm	880 x 840 x 330	
	Weight	kg	53.0	
	Breaker Size	A	20	
<b>Piping</b>	Diameter [Liquid/Gas]	mm	ø6.35/ø12.70	
	Max. Length/Height	m	30/15	
<b>Guaranteed Operating Range [Outdoor]</b>	Cooling	°C	-10 ~ 46	
	Heating	°C	-15 ~ 24	
<b>Refrigerant Amount [Pre-Charged]</b>		kg	1.6	

**Notes:**

- \*1 Nominal conditions cooling: EAT 27°CDB/19°CWB, Ambient 35°CDB. Rated conditions cooling: EAT 24°CDB/17°CWB, Ambient 35°CDB. Nominal conditions heating: EAT 20°CDB/15°CWB, Ambient 7°CDB/6°CWB.
- \*2 Zoned Energy Rating Label - residential air conditioning star rating based on GEMS 2019 Determination.
- \*3 Rated Load Amps (RLA) is based on nominal conditions. Use Maximum Circuit Amps (MCA) for power supply infrastructure sizing, etc. Test conditions are based on AS/NZS3823.1.1.

**Rating Conditions:**

- \*4 Cooling: Indoor 27°C, D.B./19°C, W.B. Outdoor 35°C, D.B./24°C, W.B.
- \*5 Heating: Indoor 20°C, D.B./15°C, W.B. Outdoor 7°C, D.B./6°C, W.B.

# Product Specifications



MFZ-KW Series (Floor Standing)				MFZ-KW25VG-A1	MFZ-KW35VG-A1	MFZ-KW42VG-A1	MFZ-KW50VG-A1	MFZ-KW60VG-A1
Indoor Unit				MUFZ-KW25VG-A1	MUFZ-KW35VG-A1	MUFZ-KW42VG-A1	MUFZ-KW50VG-A1	MUFZ-KW60VG-A1
Outdoor Unit				MUFZ-KW25VG-A1	MUFZ-KW35VG-A1	MUFZ-KW42VG-A1	MUFZ-KW50VG-A1	MUFZ-KW60VG-A1
Refrigerant				R32				
Cooling	Capacity [Rated] <sup>*1,4</sup>	kW	2.50	3.50	4.20	5.00	6.10	
	Capacity [Min-Max]	kW	0.70 - 3.40	0.70 - 3.80	0.70 - 5.00	1.00 - 5.70	1.00 - 6.50	
	Total Input [Rated] <sup>*1,4</sup>	kW	0.57	0.87	1.11	1.32	1.73	
	Total Input [Min-Max]	kW	0.19 - 0.89	0.19 - 1.01	0.19 - 1.68	0.31 - 1.95	0.31 - 2.25	
	EER		4.38	4.02	3.78		3.52	
	AEER		4.32	3.98	3.75	3.76	3.50	
	ZERL <sup>*2</sup>		Hot	4.0	3.5	3.0		2.5
			Average	3.5	3.0	2.5		
			Cold	3.5	3.5	3.0	2.5	
	Running Current [Rated] <sup>*3,4</sup>	A	3.00	4.20	5.10	5.80	7.70	
Sound Pressure Level	In [Quiet-SH]	dB(A)	20 - 44		20 - 51	27 - 44	27 - 53	
	Out [SPL/PWL]	dB(A)	48/61		48/62	53/66	53/66	
Air Volume (In) [Quiet-SH]	L/S	65 - 80 - 107 - 135 - 172			65 - 88 - 125 - 163 - 228	93 - 112 - 133 - 155 - 177	93 - 133 - 160 - 205 - 250	
Heating	Capacity [Rated] <sup>*1,5</sup>	kW	3.40	4.30	5.40	5.80	6.50	
	Capacity [Min-Max]	kW	0.23 - 4.60	0.23 - 6.00	0.23 - 6.70	1.20 - 8.20	1.20 - 8.80	
	Total Input [Rated] <sup>*1,5</sup>	kW	0.78	1.14	1.43	1.53	1.88	
	Total Input [Min-Max]	kW	0.13 - 1.35	0.13 - 2.38	0.13 - 2.40	0.37 - 3.30	0.37 - 3.43	
	COP		4.35	3.77		3.79	3.45	
	ACOP		4.31	3.74	3.75	3.77	3.44	
	ZERL <sup>*2</sup>		Hot	3.0				
			Average	2.5				
			Cold	2.5	2.0			
	Running Current [Rated] <sup>*3,5</sup>	A	3.80	5.30	6.40	6.80	8.30	
Sound Pressure Level	In [Quiet-SH]	dB(A)	18 - 44		18 - 51	29 - 50	29 - 51	
	Out [SPL/PWL]	dB(A)	46/59	47/60	47/61	56/69	56/69	
Air Volume (In) [Quiet-SH]	L/S	58 - 75 - 102 - 135 - 173			58 - 83 - 125 - 170 - 235	100 - 128 - 157 - 193 - 233	100 - 128 - 162 - 208 - 243	
Indoor Unit	Input [Rated] (Cooling/Heating)	W	28/28		52/53	26/52	63/59	
	Dimensions [HxWxD]	mm	600 x 750 x 215					
	Weight	kg	15.0					
Outdoor Unit	Dimensions [HxWxD]	mm	550 x 800 x 285			880 x 840 x 330		
	Weight	kg	35.0			54.0		
	Breaker Size	A	10		12	16	20	
Piping	Diameter [Liquid/Gas]	mm	ø6.35/ø9.52			ø6.35/ø12.70		
	Max. Length/Height	m	20/12			30/15		
Guaranteed Operating Range [Outdoor]	Cooling	°C	-10 ~ 46					
	Heating	°C	-15 ~ 24					

## Notes:

\*1 Nominal conditions cooling: EAT 27°CDB/19°CWB, Ambient 35°CDB. Rated conditions cooling: EAT 24°CDB/17°CWB, Ambient 35°CDB.

Nominal conditions heating: EAT 20°CDB/15°CWB, Ambient 7°CDB/6°CWB.

\*2 Zoned Energy Rating Label - residential air conditioning star rating based on GEMS 2019 Determination.

\*3 Rated Load Amps (RLA) is based on nominal conditions. Use Maximum Circuit Amps (MCA) for power supply infrastructure sizing, etc.

Test conditions are based on AS/NZS3823.1.1.

## Rating Conditions:

\*4 Cooling: Indoor 27°C, D.B./19°C, W.B.  
Outdoor 35°C, D.B./24°C, W.B.

\*5 Heating: Indoor 20°C, D.B./15°C, W.B.  
Outdoor 7°C, D.B./6°C, W.B.



SLZ-M Series (Ceiling Cassette)							
Indoor Unit		SLZ-M25FA-A	SLZ-M35FA-A	SLZ-M50FA-A	SLZ-M60FA-A		
Outdoor Unit		SUZ-M25VAD-A	SUZ-M35VAD-A	SUZ-M50VAD-A	SUZ-M60VAD-A		
Refrigerant		R32					
Power Supply [V, Phase, Hz]		230V, Single, 50/60Hz, Outdoor unit supply					
Cooling	Capacity [Min-Rated* <sup>1,3</sup> -Max]	kW	1.50 - 2.50 - 3.50	1.50 - 3.50 - 4.00	2.30 - 5.00 - 5.50	2.30 - 5.60 - 6.70	
	Total Input [Rated]* <sup>1,3</sup>	kW	0.62	0.93	1.49	1.64	
	EER/AEER	Star Rating		4.03/3.88	3.76/3.68	3.35/3.31	3.41/3.35
				3.5	3.0	2.0	
	AEER [Part-Load %]		-	4.85	-		
	Running Current [Rated]* <sup>2,3</sup>	A	3.30	4.30	6.60	7.20	
	Sound Pressure Level	In [Lo-Mid-Hi]	dB(A)	25 - 28 - 31	25 - 33 - 39	27 - 34 - 39	32 - 40 - 43
		Out [PWL]	dB(A)	45 (59)	48 (62)	48 (64)	49 (65)
Air Volume (In) [Lo-Mid-Hi]	L/S	108 - 125 - 142	108 - 150 - 192	117 - 150 - 192	125 - 192 - 217		
Heating	Capacity [Min-Rated* <sup>1,4</sup> -Max]	kW	1.30 - 3.00 - 4.10	1.30 - 4.00 - 5.00	1.70 - 5.00 - 5.50	2.50 - 6.00 - 7.60	
	Total Input [Rated]* <sup>1,4</sup>	kW	0.78	1.05	1.58	1.87	
	COP/ACOP	Star Rating		3.85/3.73	3.80/3.73	3.16/3.12	3.20/3.16
				2.5		1.5	
	ACOP [Part-Load %]		4.77	-	4.54	4.63	
	Running Current [Rated]* <sup>2,4</sup>	A	3.90	4.80	7.10	8.20	
	Sound Pressure Level	In [Lo-Mid-Hi]	dB(A)	25 - 28 - 31	25 - 33 - 39	27 - 34 - 39	32 - 40 - 43
		Out [PWL]	dB(A)	46 (59)	48 (63)	49 (66)	51 (68)
Air Volume (In) [Lo-Mid-Hi]	L/S	108 - 125 - 142	108 - 150 - 192	117 - 150 - 192	125 - 192 - 217		
Starting Current	A	3.90	4.80	7.10	8.20		
Indoor Unit	Input [Rated]	kW	0.02	0.03		0.40	
	Dimensions [HxWxD]	mm	245 x 570 x 570				
		Panel	mm	10 x 625 x 625			
	Weight [Panel]	kg	15.0 (3.0)				
Static Pressure	Pa	-					
Outdoor Unit	Dimensions [HxWxD]	mm	550 x 800 x 285		714 x 800 x 285	880 x 840 x 330	
	Weight	kg	30.0	35.0	41.0	54.0	
	Max. Running Current	A	6.80	8.50	13.50	14.80	
	Breaker Size	A	10		20		
Piping	Diameter [Liquid/Gas]	mm	ø6.35/ø9.52		ø6.35/ø12.70	ø6.35/ø15.88	
	Max. Length/Height	m	20/12		30/30		
Guaranteed Operating Range [Outdoor]	Cooling	°C	-10 ~ 52		-15 ~ 52		
	Heating	°C	-10 ~ 24		-15 ~ 24		

**Notes:**

\*1 Nominal conditions cooling: EAT 27°CDB/19°CWB, Ambient 35°CDB. Rated conditions cooling: EAT 24°CDB/17°CWB, Ambient 35°CDB.  
 Nominal conditions heating: EAT 20°CDB/15°CWB, Ambient 7°CDB/6°CWB.

\*2 Rated Load Amps (RLA) is based on nominal conditions. Use Maximum Circuit Amps (MCA) for power supply infrastructure sizing, etc.

Test conditions are based on AS/NZS3823.1.1.

**Rating Conditions:**

\*3 Cooling: Indoor 27°C, D.B./19°C, W.B.  
 Outdoor 35°C, D.B./24°C, W.B.

\*4 Heating: Indoor 20°C, D.B./15°C, W.B.  
 Outdoor 7°C, D.B./6°C, W.B.

# Product Specifications



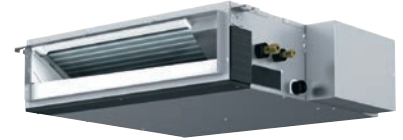
MLZ-KP Series (Ceiling Cassette)						
Indoor Unit		MLZ-KP25VF	MLZ-KP35VF	MLZ-KP50VF		
Outdoor Unit		SUZ-M25VAD-A	SUZ-M35VAD-A	SUZ-M50VAD-A		
Refrigerant		R32				
Power Supply [V, Phase, Hz]		230V, Single, 50/60Hz, Outdoor unit supply				
Cooling	Capacity [Min-Rated* <sup>1,3</sup> -Max]	kW	1.50 - 2.50 - 3.20	1.50 - 3.50 - 4.10	2.30 - 5.00 - 5.50	
	Total Input [Rated]* <sup>1,3</sup>	kW	0.59	0.90	1.37	
	EER/AEER	Star Rating		4.23/4.07	3.88/3.80	3.64/3.59
				3.5	3.0	2.5
	AEER [Part-Load %]		-			
	Running Current [Rated]* <sup>2,3</sup>	A	3.30	4.20	6.10	
	Sound Pressure Level	In [Slo-Lo-Mid-Hi]	dB(A)	27 - 31 - 34 - 38	27 - 32 - 36 - 40	29 - 36 - 41 - 47
Out [PWL]		dB(A)	45 (59)	48 (62)	48 (64)	
Air Volume (In) [Lo-Mid-Hi]	L/S	100 - 120 - 133 - 147	100 - 122 - 140 - 157	100 - 138 - 163 - 190		
Heating	Capacity [Min-Rated* <sup>1,4</sup> -Max]	kW	1.30 - 3.20 - 4.20	1.30 - 4.10 - 4.70	1.70 - 6.00 - 6.80	
	Total Input [Rated]* <sup>1,4</sup>	kW	0.79	1.13	1.83	
	COP/ACOP	Star Rating		4.05/3.93	3.62/3.56	3.27/3.24
				3.5	2.5	2.0
	ACOP [Part-Load %]		-			
	Running Current [Rated]* <sup>2,4</sup>	A	4.00	5.00	8.10	
	Sound Pressure Level	In [Slo-Lo-Mid-Hi]	dB(A)	26 - 29 - 34 - 37	26 - 32 - 36 - 40	26 - 37 - 42 - 48
Out [PWL]		dB(A)	46 (59)	48 (63)	49 (66)	
Air Volume (In) [Lo-Mid-Hi]	L/S	100 - 117 - 137 - 153	100 - 128 - 147 - 165	100 - 147 - 172 - 197		
Starting Current	A	4.00	5.00	8.10		
Indoor Unit	Input [Rated]	kW	0.04			
	Dimensions [HxWxD]	mm	185 x 1102 x 360			
		Panel	mm	24 x 1200 x 424		
	Weight [Panel]	kg	15.5 (3.5)			
Static Pressure	Pa	-				
Outdoor Unit	Dimensions [HxWxD]	mm	550 x 800 x 285	714 x 800 x 285		
	Weight	kg	30.0	35.0	41.0	
	Max. Running Current	A	6.80	8.50	13.50	
	Breaker Size	A	10			
Piping	Diameter [Liquid/Gas]	mm	ø6.35/ø9.52			
	Max. Length/Height	m	20/12			
Guaranteed Operating Range [Outdoor]	Cooling	°C	-10 ~ 52			
	Heating	°C	-10 ~ 24			

## Notes:

- \*1 Nominal conditions cooling: EAT 27°CDB/19°CWB, Ambient 35°CDB. Rated conditions cooling: EAT 24°CDB/17°CWB, Ambient 35°CDB. Nominal conditions heating: EAT 20°CDB/15°CWB, Ambient 7°CDB/6°CWB.
- \*2 Rated Load Amps (RLA) is based on nominal conditions. Use Maximum Circuit Amps (MCA) for power supply infrastructure sizing, etc. Test conditions are based on AS/NZS3823.1.1.

## Rating Conditions:

- \*3 Cooling: Indoor 27°C, D.B./19°C, W.B. Outdoor 35°C, D.B./24°C, W.B.
- \*4 Heating: Indoor 20°C, D.B./15°C, W.B. Outdoor 7°C, D.B./6°C, W.B.



SEZ-M Series (Compact Bulkhead)									
Indoor Unit		SEZ-M25DA(L)	SEZ-M35DA(L)	SEZ-M50DA(L)	SEZ-M60DA(L)	SEZ-M71DA(L)			
Outdoor Unit		SUZ-M25VAD-A	SUZ-M35VAD-A	SUZ-M50VAD-A	SUZ-M60VAD-A	SUZ-M71VAD-AZ			
Refrigerant		R32							
Power Supply [V, Phase, Hz]		230V, Single, 50/60Hz, Outdoor unit supply							
Cooling	Capacity [Min-Rated* <sup>1,3</sup> -Max]	kW	1.50 - 2.50 - 3.20	1.50 - 3.50 - 4.00	2.30 - 5.00 - 6.30	2.30 - 6.00 - 6.50	2.80 - 7.10 - 8.30		
	Total Input [Rated]* <sup>1,3</sup>	kW	0.70	1.01	1.40	1.73	2.14		
	EER/AEER	Star Rating	-						
			-						
	AEER [Part-Load %]	-							
	Running Current [Rated]* <sup>2,3</sup>	A	3.70	4.70	6.40	7.60	9.40		
	Sound Pressure Level	In [Lo-Mid-Hi]	dB(A)		23 - 26 - 30	23 - 28 - 33	30 - 34 - 37	30 - 34 - 38	30 - 35 - 40
		Out [PWL]	dB(A)		45 (59)	48 (62)	48 (64)	49 (65)	49 (66)
Air Volume (In) [Lo-Mid-Hi]	L/S	92 - 117 - 150	117 - 150 - 183	167 - 208 - 250	200 - 250 - 300	200 - 267 - 333			
Heating	Capacity [Min-Rated* <sup>1,4</sup> -Max]	kW	1.30 - 3.00 - 4.20	1.30 - 4.00 - 5.00	1.70 - 6.00 - 7.20	2.50 - 7.00 - 8.00	2.60 - 8.00 - 10.40		
	Total Input [Rated]* <sup>1,4</sup>	kW	0.87	1.11	1.66	2.00	2.22		
	COP/ACOP	Star Rating	-						
			-						
	ACOP [Part-Load %]	-							
	Running Current [Rated]* <sup>2,4</sup>	A	4.30	5.00	7.50	8.70	9.70		
	Sound Pressure Level	In [Lo-Mid-Hi]	dB(A)		23 - 26 - 30	23 - 28 - 33	30 - 34 - 37	30 - 34 - 38	30 - 35 - 40
		Out [PWL]	dB(A)		46 (59)	48 (63)	49 (66)	51 (68)	
Air Volume (In) [Lo-Mid-Hi]	L/S	92 - 117 - 150	117 - 150 - 183	167 - 208 - 250	200 - 250 - 300	200 - 267 - 333			
Starting Current	A	4.30	5.00	7.50	8.70	9.70			
Indoor Unit	Input [Rated]	kW	0.04	0.05	0.07	0.07	0.10		
	Dimensions [HxWxD]	mm	200 x 790 x 700	200 x 990 x 700		200 x 1190 x 700			
		Panel	mm	-					
	Weight [Panel]	kg	17.5	21.0	22.0	25.5			
Static Pressure	Pa	5 - 15 - 35 - 50							
Outdoor Unit	Dimensions [HxWxD]	mm	550 x 800 x 285		714 x 800 x 285	880 x 840 x 330			
	Weight	kg	30.0	35.0	41.0	54.0	55.0		
	Max. Running Current	A	6.80	8.50	13.50	14.80			
	Breaker Size	A	10		20	20			
Piping	Diameter [Liquid/Gas]	mm	ø6.35/ø9.52		ø6.35/ø12.70	ø6.35/ø15.88	ø9.52/ø15.88		
	Max. Length/Height	m	20/12						
Guaranteed Operating Range [Outdoor]	Cooling	°C	-10 ~ 52			-15 ~ 52			
	Heating	°C	-10 ~ 24			-15 ~ 24			

**Notes:**

\*1 Nominal conditions cooling: EAT 27°CDB/19°CWB, Ambient 35°CDB. Rated conditions cooling: EAT 24°CDB/17°CWB, Ambient 35°CDB.  
 Nominal conditions heating: EAT 20°CDB/15°CWB, Ambient 7°CDB/6°CWB.

\*2 Rated Load Amps (RLA) is based on nominal conditions. Use Maximum Circuit Amps (MCA) for power supply infrastructure sizing, etc.

Test conditions are based on AS/NZS3823.1.1.

**Rating Conditions:**

\*3 Cooling: Indoor 27°C, D.B./19°C, W.B.  
 Outdoor 35°C, D.B./24°C, W.B.

\*4 Heating: Indoor 20°C, D.B./15°C, W.B.  
 Outdoor 7°C, D.B./6°C, W.B.

The products of Mitsubishi Electric Australia come with guarantees, additional to this Warranty, that cannot be excluded under the Australian Consumer Law. You are entitled to a replacement or refund for a major failure and for compensation for any other reasonably foreseeable loss or damage. You are also entitled to have the goods repaired or replaced if the goods fail to be of acceptable quality and failure does not amount to a major failure.



See website for full Terms and Conditions

SPLIT2021\_SEP4

Products in this brochure contain refrigerant R32. Please refer to the specifications before installation and servicing of these products. The purchaser must ensure that the person and/or companies are suitably licensed and experienced are permitted to install, service and repair the air conditioners. Suitable access for warranty and service is required. Specifications, designs and other content appearing in this brochure is current at the time of printing, and is subject to change without notice. Images are representational for illustration purposes. Printed: September 2021.

For more information contact  
[www.mitsubishielectric.com.au](http://www.mitsubishielectric.com.au)  
Call 1300 722 228

Distributed and guaranteed throughout Australia by  
**MITSUBISHI ELECTRIC AUSTRALIA PTY. LTD.**  
(Incorporated in New South Wales) A.B.N. 58 001 215 792