

## OUTDOOR UNIT

# PARTS CATALOG

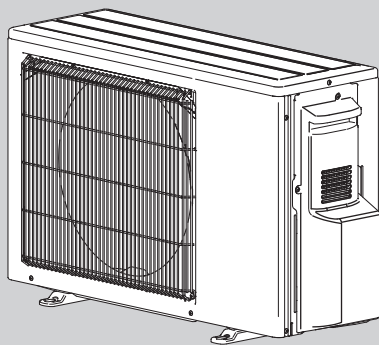


No. OBB923

### Models

**PXZ-4F75VG** - E1

**PXZ-5F85VG** - E1



PXZ-4F75VG

---

### CONTENTS

- 
- 1. SERVICE PARTS LIST ..... 2
  - 2. OPTIONAL PARTS ..... 10

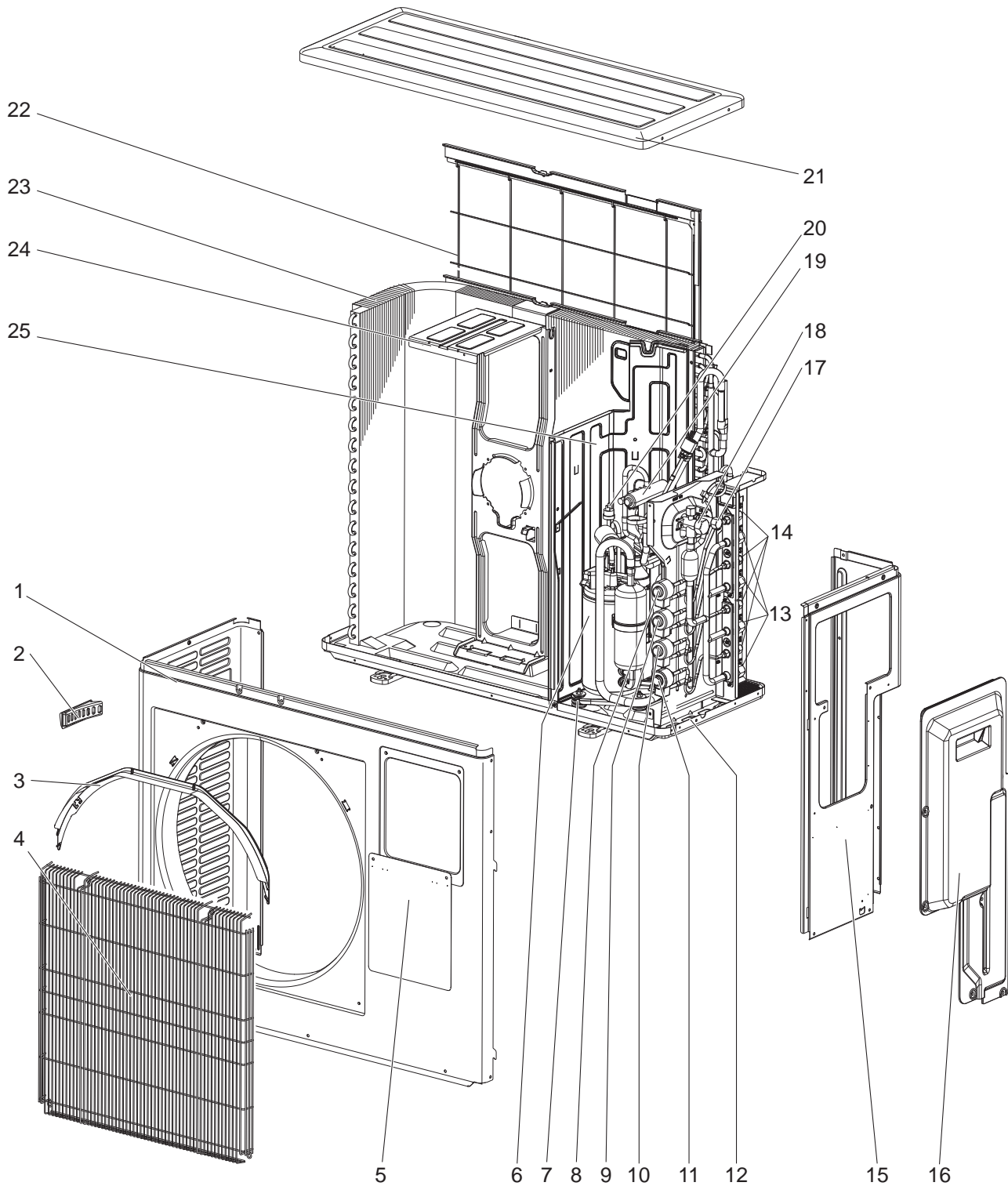
**SERVICE MANUAL (OBH923)**

# 1

# SERVICE PARTS LIST

PXZ-4F75VG

## 1-1. OUTDOOR UNIT STRUCTURAL PARTS AND FUNCTIONAL PARTS



## 1-1. OUTDOOR UNIT STRUCTURAL PARTS AND FUNCTIONAL PARTS

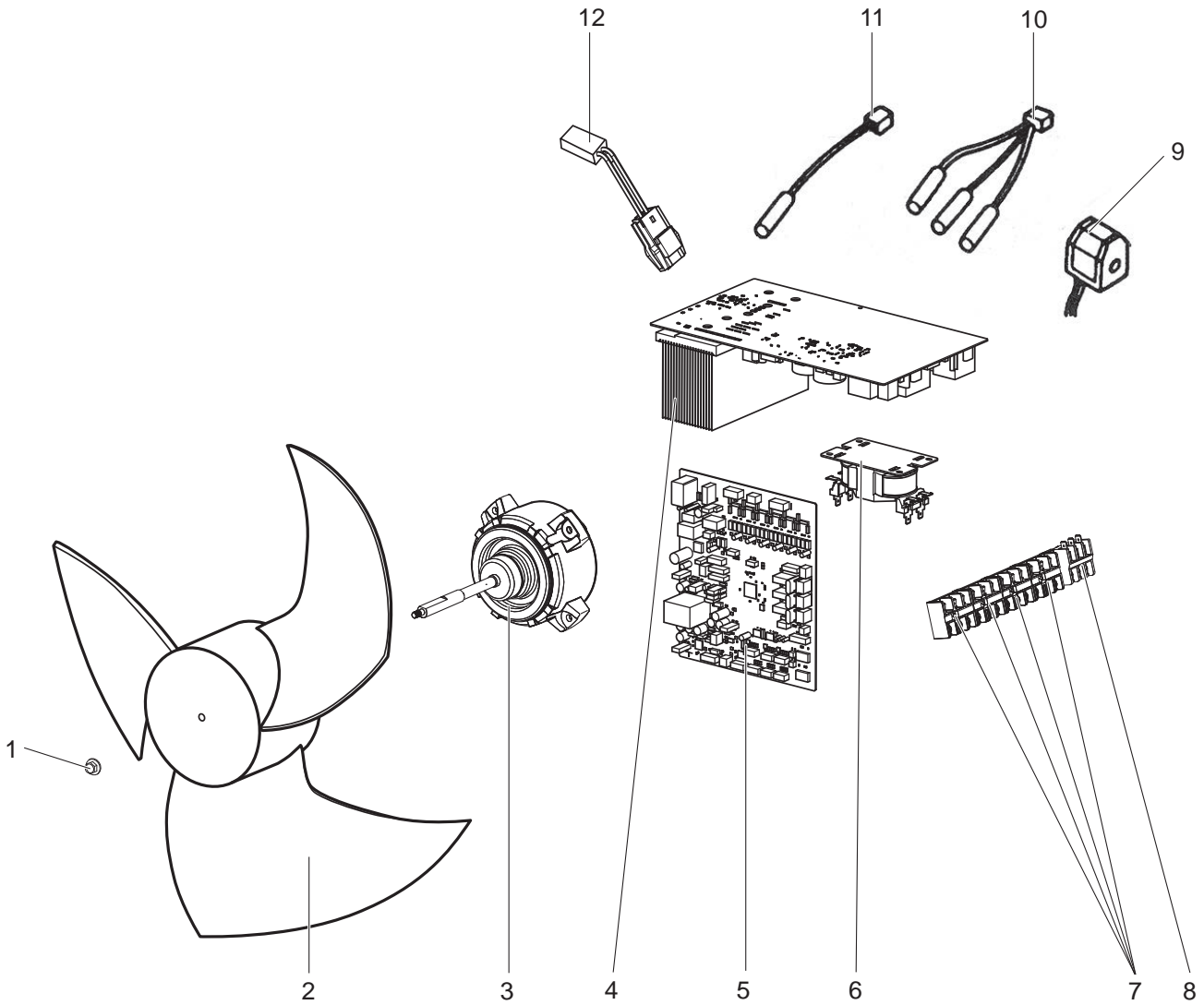
1. The part quantity below indicates the required number of pieces per unit.

2. The circled No. indicates that the part is not shown in the figure.

No.	Part No.	Part Name	PXZ-4F75VG - E	Symbol in Wiring Diagram	Remarks
1	E22 06T 232	CABINET	1		
2	E22 817 009	HANDLE	1		
3	E22 J69 531	ICE GUARD	1		
4	E22 R24 521	GRILLE(OUT)	1		
5	E22 94W 246	SUB PANEL	1		
6	E27 63M 900	COMPRESSOR	1	MC	SVB172FPKM1T
7	E22 C34 506	COMPRESSOR RUBBER MOUNT	3		3 RUBBERS/SET
8	E27 F03 640	EXPANSION VALVE	1		D room
8	E22 98C 493	EXPANSION VALVE COIL	1	LEV D	D room,Connector:YELLOW
9	E27 F03 640	EXPANSION VALVE	1		C room
9	E22 94C 493	EXPANSION VALVE COIL	1	LEV C	C room,Connector:BLUE
10	E27 F03 640	EXPANSION VALVE	1		B room
10	E22 93C 493	EXPANSION VALVE COIL	1	LEV B	B room,Connector:RED
11	E27 F03 640	EXPANSION VALVE	1		A room
11	E22 92C 493	EXPANSION VALVE COIL	1	LEV A	A room,Connector:WHITE
12	E22 T07 290	BASE	1		
13	E22 D36 666	UNION (GAS)	3		Ø9.52
13	E22 D37 666	UNION (GAS)	1		Ø12.7
14	E22 D36 667	UNION (LIQUID)	4		Ø6.35
15	E22 R52 233	BACK PANEL(OUT)	1		
16	E22 R51 245	SERVICE PANEL	1		
17	E22 D36 662	STOP VALVE (LIQUID) 3/8F	1		Ø9.52
18	E22 D36 661	STOP VALVE (GAS) 5/8F	1		Ø15.88
19	E22 C18 961	4-WAY VALVE	1		
20	E27 942 646	HIGH PRESSURE SWITCH	1	HPS	
21	E22 06T 297	TOP PANEL	1		
22	E22 J69 523	REAR GUARD	1		
23	E22 T07 630	OUTDOOR HEAT EXCHANGER	1		Includes capillary tubes
24	E22 J69 515	MOTOR SUPPORT	1		
25	E22 94W 293	SEPARATOR	1		
26	—	BRAND LABEL	1		[ JG79T308H01 ]
27	E22 939 936	CAPILLARY TUBE	4		Ø4.0 × Ø2.8 × 100, Close to every expansion valve
28	E22 96G 959	POWER RECEIVER	1		
29	E22 02J 640	EXPANSION VALVE	1		
29	E22 02J 493	EXPANSION VALVE COIL	1	LEV R	Blue
30	—	COMPRESSOR LEAD ASSEMBLY	1		[ BH78T881G06 ]
31	—	COMPRESSOR FELT(TOP)	1		[ RK33J337H03 ]
32	—	COMPRESSOR FELT(BODY)	1		[ RK33J216H02 ]
33	—	COMPRESSOR FELT(BACK)	1		[ BK33V324H01 ]
34	E22 02L 963	DISCHARGE PIPE ASSEMBLY	1		Includes HPS, oil separator, capillary tube(Ø2.5 × Ø0.6 × 1000)
35	E22 94W 646	HIGH PRESSURE SENSOR	1	63HS	

# PXZ-4F75VG

## 1-2. OUTDOOR UNIT FUNCTIONAL PARTS AND ELECTRICAL PARTS



## 1-3. ACCESSORY



## 1-2. OUTDOOR UNIT FUNCTIONAL PARTS AND ELECTRICAL PARTS

1. The part quantity below indicates the required number of pieces per unit.
2. The circled No. indicates that the part is not shown in the figure.

No.	Part No.	Part Name	PXZ-4F75VG - [ET]	Symbol in Wiring Diagram	Remarks [Drawing No.]
1	E27 A15 508	PROPELLER FAN NUT	1		
2	E22 851 501	PROPELLER FAN	1		
3	E22 16B 301	OUTDOOR FAN MOTOR	1	MF	SIC-82FX-F764-1
4	E22 94W 440	OUTDOOR POWER P.C. BOARD	1		Includes heat sink and RT64
5	E22 94W 450	OUTDOOR CONTROL P.C. BOARD	1		
6	E22 R51 337	REACTOR	1	L	13 A 282 μH
7	E22 C92 375	TERMINAL BLOCK	4	TB2-5	Indoor unit connecting
8	E22 G07 374	TERMINAL BLOCK	1	TB1	Power supply
9	E22 T07 490	R.V. COIL	1	21S4	
10	E22 01L 308	THERMISTOR SET	1	RT61, RT62, RT68	DEFROST, DISCHARGE, OUTDOOR HEAT EXCHANGER
11	E22 96G 309	AMBIENT TEMPERATURE THERMISTOR	1	RT65	
12	E22 94W 381	THERMAL PROTECTOR	1	TRS	
(13)	—	PB HOLDER POWER	1		[ BK00N964G02 ]
(14)	—	PB COVER	1		[ BK00T375G04 ]
(15)	—	PB HOLDER CONT	1		[ DK00C603G01 ]

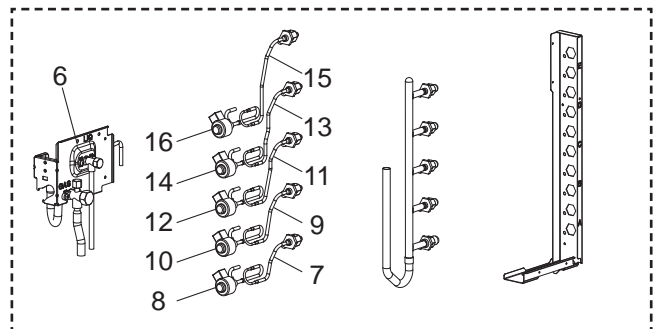
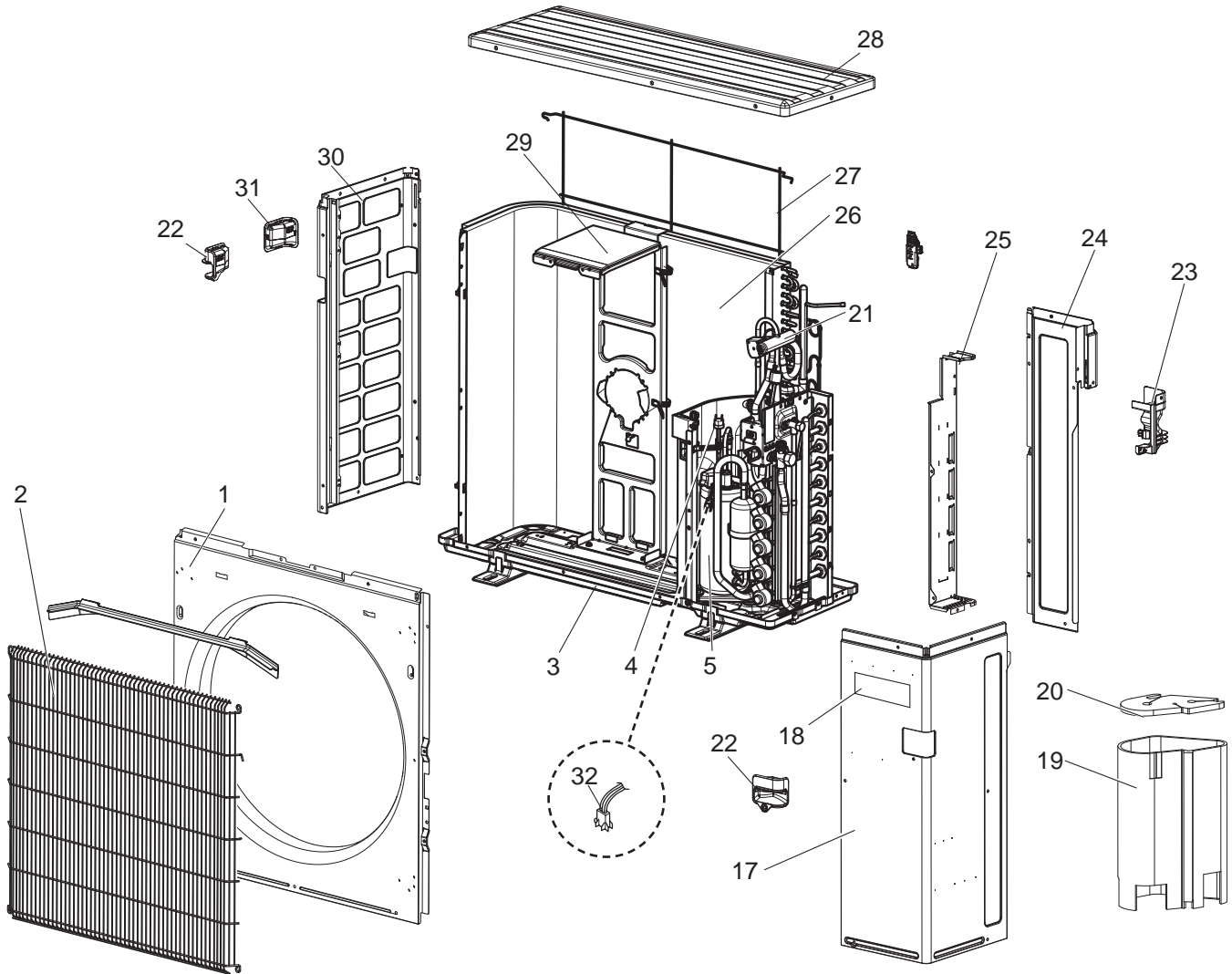
## 1-3. ACCESSORY

1. The part quantity below indicates the required number of pieces per unit.

No.	Part No.	Part Name	PXZ-4F75VG - [ET]	Symbol in Wiring Diagram	Remarks [Drawing No.]
16	E22 817 704	DRAIN SOCKET	1		
17	E22 444 705	DRAIN CAP	2		2 PCS/SET

# PXZ-5F85VG

## 1-4. STRUCTURAL PARTS AND FUNCTIONAL PARTS



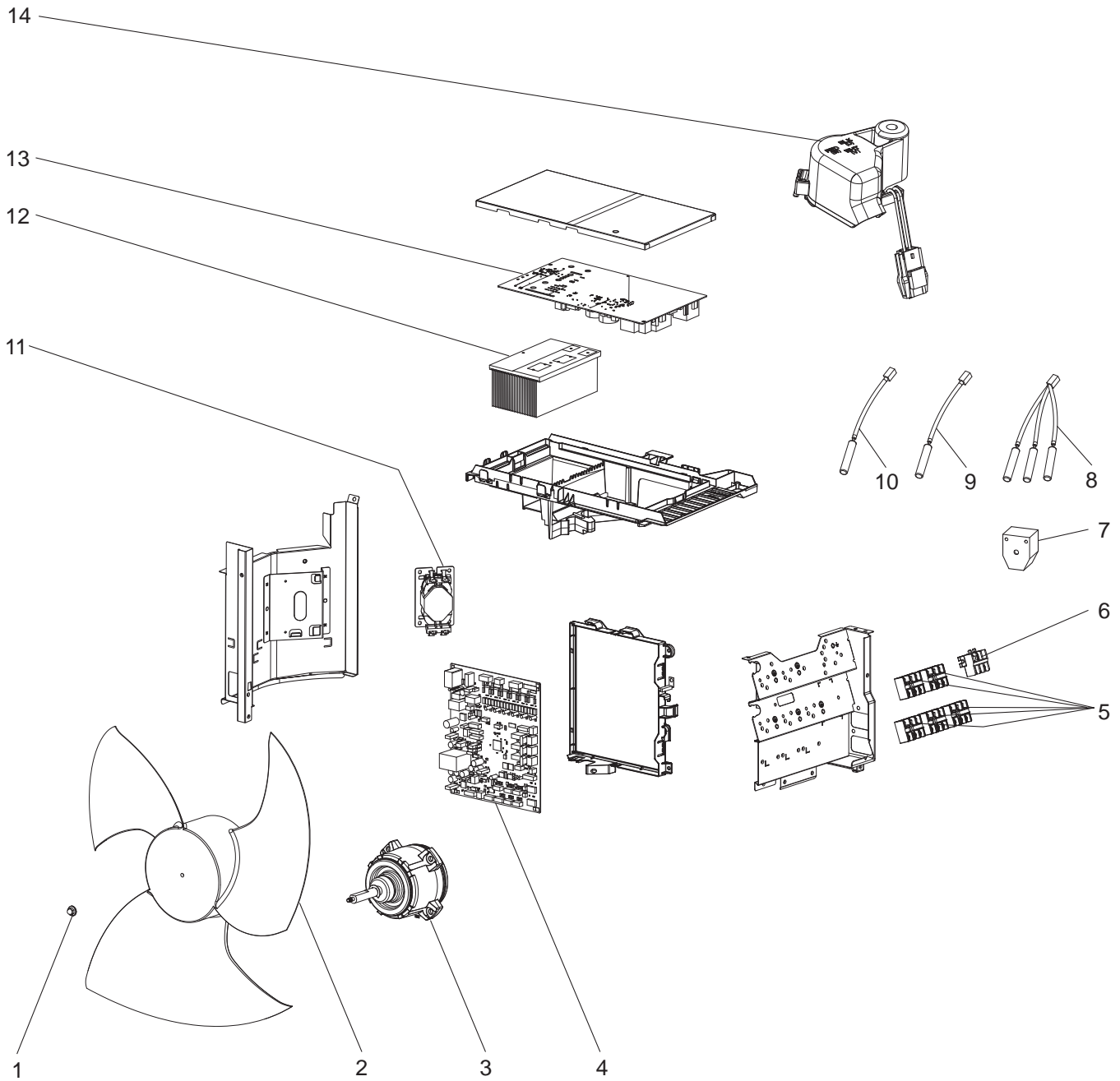
## 1-4. STRUCTURAL PARTS AND FUNCTIONAL PARTS

1. The part quantity below indicates the required number of pieces per unit.
2. The circled No. indicates that the part is not shown in the figure.

No.	Part No.	Part Name	PXZ-5F85VG - [LET]	Symbol in Wiring Diagram	Remarks [Drawing No.]
1	R01 E29 668	FRONT PANEL	1		
2	T7W E09 691	WIRE GRILLE	1		
3	T7W E25 686	BASE ASSY	1		
4	R01 H06 208	HIGH PRESSURE SWITCH	1	HPS	
5	T97 443 607	SVB220FUGMC-L1 COMP	1	MC	Includes RUBBER MOUNTS
6	T7W E17 410	STOP VALVE ASSY-L/G	1		
7	T7W S00 401	LEV-UNION ASSY-A	1	LEV A	A room
8	R01 H50 242	COIL(LEV)/XAP-5P WH	1	LEV A	A room, Connector: WHITE
9	T7W S01 401	LEV-UNION ASSY-B	1	LEV B	B room
10	R01 H51 242	COIL(LEV)/XAP-5P RED	1	LEV B	B room, Connector: RED
11	T7W S02 401	LEV-UNION ASSY-C	1	LEV C	C room
12	R01 H52 242	COIL(LEV)/XAP-5P BLU	1	LEV C	C room, Connector: BLUE
13	T7W S03 401	LEV-UNION ASSY-D	1	LEV D	D room
14	R01 H53 242	COIL(LEV)/XAP-5P YEL	1	LEV D	D room, Connector: YELLOW
15	T7W S04 401	LEV-UNION ASSY-E	1	LEV E	E room
16	R01 H54 242	COIL(LEV)/XAP-5P BLK	1	LEV E	E room, Connector: BLACK
17	T7W E30 667	SERVICE PANEL	1		
18	T7W A25 005	BRAND LABEL(ECODAN)	1		
19	T7W B06 602	COMP FELT-SVB22/BODY	1		
20	T7W T06 602	COMP FELT-SVB22/TOP	1		
21	R01 E45 403	4WAY VALVE	1	21S4	
22	R01 E07 655	HANDLE(FRONT)	2		
23	R01 E09 655	HANDLE(R_REAR)	1		
24	R01 E24 682	REAR PANEL	1		
25	R01 E69 661	BACK PILLER	1		
26	T7W R01 408	HEAT EXCHANGER	1		
27	R01 E12 698	REAR GUARD	1		
28	T7W E19 641	TOP PANEL	1		
29	R01 S00 130	MOTOR SUPPORT	1		
30	R01 E38 662	SIDE PANEL(L)	1		
31	R01 E08 655	HANDLE(L REAR)	1		
32	T7W C02 510	LEAD ASSY COMP	1		
33	T7W S00 440	ACCUMULATOR	1		
34	T7W E19 208	H.P SENSER	1	63HS	
35	R01 E03 508	DAMPER SET	1		2PCS/SET

PXZ-5F85VG

1-5. OUTDOOR UNIT FUNCTIONAL PARTS AND ELECTRICAL PARTS





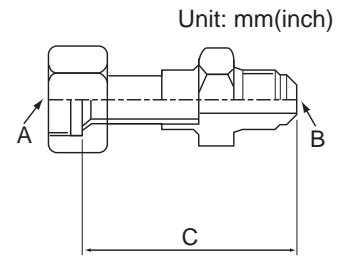
## 1-5. OUTDOOR UNIT FUNCTIONAL PARTS AND ELECTRICAL PARTS

1. The part quantity below indicates the required number of pieces per unit.

No.	Part No.	Part Name	PXZ-5F85VG - [E1]	Symbol in Wiring Diagram	Remarks [Drawing No.]
1	R01 E16 097	NUT M6	1		
2	R01 E15 115	PROPELLER FAN	1		
3	R01 E81 221	FAN MOTOR	1	MF	
4	T7W S57 315	CONTROLLER BOARD	1		
5	T7W E13 716	T.B./S1.S2.S3	5	TB2-6	INDOOR UNIT CONNECTING
6	T7W E65 716	T.B./L.N.E	1	TB1	POWER SUPPLY
7	T7W E83 242	SOLENOID COIL (21S4)	1	21S4	
8	R01 M32 202	THERMISTOR DDH	1	RT61, RT62, RT68	DISCHARGE, OUTDOOR HEAT EXCHANGER
9	R01 M21 202	THERMISTOR	1	RT65	AMBIENT
10	R01 M20 202	THERMISTOR(HS)	1	RT64	FIN(HEAT SINK)
11	R01 E55 259	REACTOR	1	L	
12	R01 A17 371	HEAT SINK	1		Includes SCREWS
13	T7W S21 323	POWER BOARD	1		Includes SILICONE
14	T7W E24 201	TRS ASSY	1	TRS	

2-1. DIFFERENT-DIAMETER PIPE

Applied unit	For different diameter pipes	Connected pipes diameter	Diameter A	Diameter B	Length C
PXZ-4F75VG PXZ-5F85VG	MAC-A454JP-E	ø9.52 (3/8) — ø12.7 (1/2)	ø9.52 (3/8)	ø12.7 (1/2)	69
PXZ-4F75VG PXZ-5F85VG	MAC-A455JP-E	ø12.7 (1/2) — ø9.52 (3/8)	ø12.7 (1/2)	ø9.52 (3/8)	65
PXZ-4F75VG PXZ-5F85VG	MAC-A456JP-E	ø12.7 (1/2) — ø15.88 (5/8)	ø12.7 (1/2)	ø15.88 (5/8)	66.5
PXZ-4F75VG PXZ-5F85VG	PAC-493PI	ø6.35 (1/4) — ø9.52 (3/8)	ø6.35 (1/4)	ø9.52 (3/8)	60.5
PXZ-4F75VG PXZ-5F85VG	PAC-SG76RJ-E	ø9.52 (3/8) — ø15.88 (5/8)	ø9.52 (3/8)	ø15.88 (5/8)	101.5

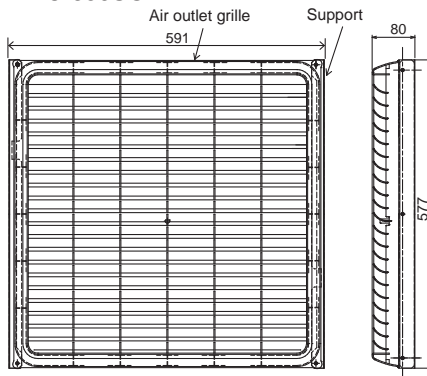


2-2. OUTLET GUIDE

Changes air discharge direction.

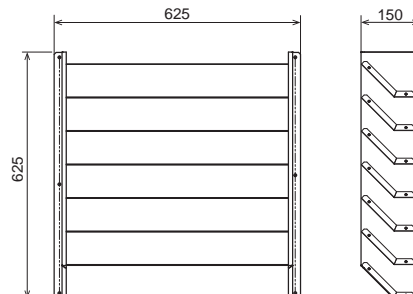
Applied unit	Model name
PXZ-4F75VG	MAC-856SG
PXZ-5F85VG	PAC-SH96SG-E

MAC-856SG



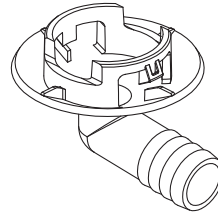
Unit: mm

PAC-SH96SG-E



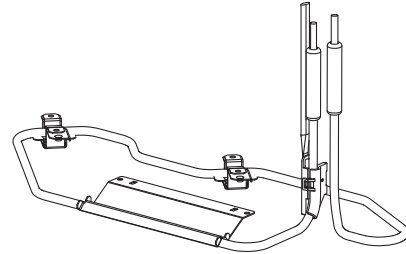
### 2-3. DRAIN SOCKET

Applied unit	Model name
PXZ-5F85VG	PAC-SG60DS-E

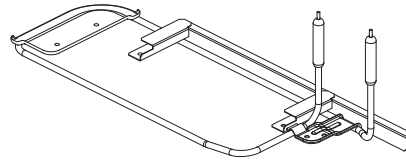


### 2-4. BASE HEATER

Applied unit	Model name
PXZ-4F75VG	PAC-646BH-E
PXZ-5F85VG	PAC-645BH-E



PAC-646BH-E



PAC-645BH-E

### 2-5. MUFFLER

Applied unit	Model name
PXZ-4F75VG PXZ-5F85VG	MAC-001MF-E

(1) Muffler x 1	(2) Pipe cover x 2	(3) Pipe cover x 1

### 2-6. CONNECTOR FOR DRAIN HOSE HEATER

Applied unit	Model name
PXZ-4F75VG PXZ-5F85VG	MAC-062RA-E

(1) Terminal block assy x 1	(2) Screw x 2	(3) Cable strap x 1

# **mitsubishi electric corporation**

HEAD OFFICE: TOKYO BUILDING, 2-7-3, MARUNOUCHI, CHIYODA-KU, TOKYO 100-8310, JAPAN

© Copyright 2022 MITSUBISHI ELECTRIC CORPORATION  
Published: Oct. 2022. No.OBB923  
Made in Japan

Specifications are subject to change without notice.